



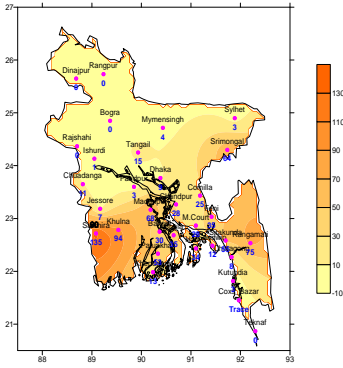
Government of the People's Republic of Bangladesh  
Bangladesh Meteorological Department  
(Agro-meteorology Division)  
Meteorological Complex, Agargaon, Dhaka-1207.

Agm-3 (2)/2016/09

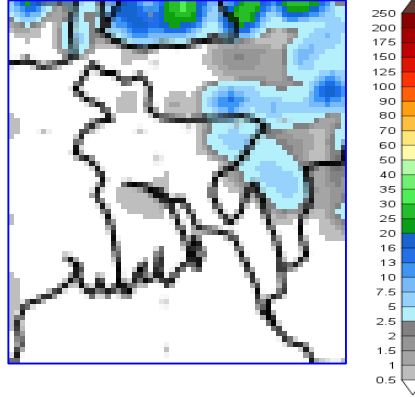
Issue date: 01-03-2016

**Forecast for the period: 01.03.2016 to 07.03.2016**

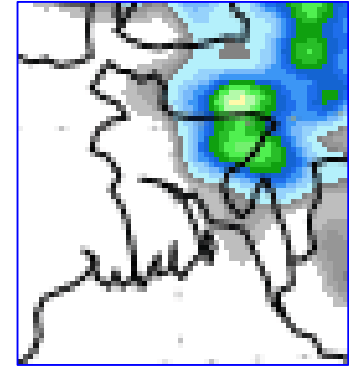
Spatial distribution of Rainfall  
(Period: 22-02-2016 to 29-02-2016)



Accumulative Rainfall forecast  
(Period: 01-03-2016 to 07-03-2016)



Extended Outlook for accumulative rain  
(Period: 08-03-2016 to 14-03-2016)



**Highlights:**

Country average of bright sunshine hour was 5.67 hours per day during last week.

Country average of free water loss during the previous week was 3.62 mm per day.

**Weather Forecast and Advisory for the Period of 01.03.2016 to 07.03.2016.**

Bright sunshine hour is expected to be between 6.0 to 7.50 hours per day during this week.

Average of free water loss during the next week is expected to be between 3.0 mm to 4.0 mm per day.

- Trough of low lies over West Bengal and adjoining area. Seasonal low lies over South Bay.
- Weather may remain mainly dry with temporary partly cloudy sky over the country during this period with a chance of isolated light (04-11 mm) to moderate (11-22 mm) rain/thunder showers accompanied by temporary gusty/squally wind is likely to occur at one or two places over Sylhet, Khulna & Barisal divisions during the second half of this period.
- Light fog may occur at places over the river basin area from midnight till morning.
- Slight rise in day and night temperatures are expected over the country during this period.

*Ayesha*

(Mossammat Ayesha Khatun)

Deputy Director

For Director

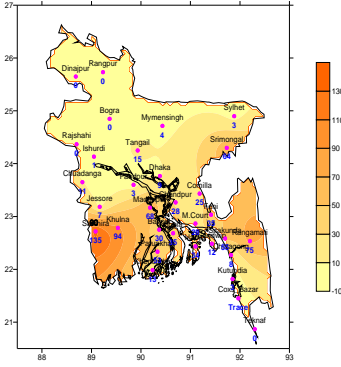
Phone: 8130305(Office)

N.B-Visit BMD Website – [www.bmd.gov.bd](http://www.bmd.gov.bd) for colored digital map of weekly rainfall forecast.

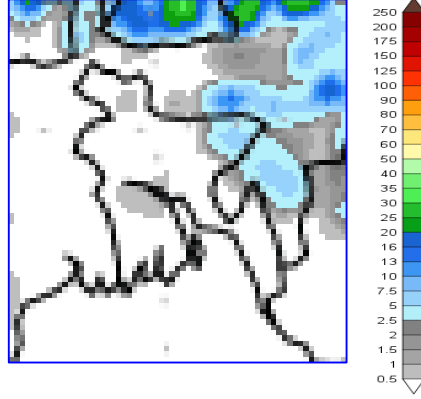
## Bengali Version

পূর্বাভাস, সময়: ০১-০৩-২০১৬ থেকে ০৭-০৩-২০১৬

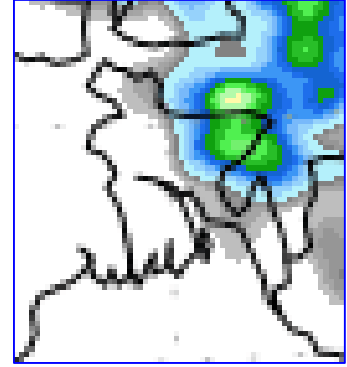
Spatial distribution of Rainfall  
(Period: 22-02-2016 to 29-02-2016)



Accumulative Rainfall forecast  
(Period: 01-03-2016 to 07-03-2016)



Extended Outlook for accumulative rain  
(Period: 08-03-2016 to 14-03-2016)



### প্রধান বৈশিষ্ট্য সমূহঃ-

গত সপ্তাহে দেশের দৈনিক উজ্জ্বল সূর্যকিরণ কালের গড় ৫.৬৭ ঘন্টা ছিল।  
গত সপ্তাহে দেশের দৈনিক বাষ্পীভবনের গড় ৩.৬২ মিঃ মিঃ ছিল।

### আবহাওয়ার পূর্বাভাসঃ- ০১-০৩-২০১৬ থেকে ০৭-০৩-২০১৬ ইং পর্যন্ত।

এ সপ্তাহে দৈনিক উজ্জ্বল সূর্য কিরণ কাল ৬.০ থেকে ৭.৫ ঘন্টার মধ্যে থাকতে পারে।  
আগামী সপ্তাহের বাষ্পীভবনের দৈনিক গড় মান ৩.০ মিঃ মিঃ থেকে ৪.০ মিঃমিঃ থাকতে পারে।

- লঘুচাপের বর্ধিতাংশ পশ্চিমবঙ্গ ও তৎসংলগ্ন এলাকায় অবস্থান করছে। এ মৌসুমের স্বাভাবিক লঘুচাপ দক্ষিণ বঙ্গোপসাগরে অবস্থান করছে।
- এ সময়ে সারাদেশের আকাশ আংশিক মেঘলাসহ আবহাওয়া প্রধানতঃ শুষ্ক থাকতে পারে। সে সাথে এসময়ের দ্বিতীয়ার্ধে সিলেট, খুলনা ও বরিশাল বিভাগের দু'এক স্থানে বিক্ষিপ্তভাবে অস্থায়ী দমকা/ঝড়ো হাওয়াসহ হালকা (০৪-১০ মি.মি.) থেকে মাঝারী (১১-২২ মি.মি.) ধরনের বৃষ্টি/বজ্রবৃষ্টি হতে পারে।
- এ সময়ে মধ্যরাত থেকে সকাল পর্যন্ত দেশের নদী অববাহিকায় হালকা কুয়াশা পড়তে পারে।
- এ সময়ে সারাদেশের দিন ও রাতের তাপমাত্রা সামান্য বৃদ্ধি পেতে পারে।

Ayesha

(মোসাম্মৎ আয়শা খাতুন)  
উপ-পরিচালক  
পরিচালকের পক্ষে  
ফোনঃ ৮১৩০৩০৫(দপ্তর)

বিঃ দ্রঃ- পূর্বাভাসের ডিজিটাল map দেখতে visit করুন- [www.bmd.gov.bd](http://www.bmd.gov.bd)

**Short Weater Description, Period: 22.02.2016 to 29.02.2016**

Light to moderate rainfall was recorded at many places over the country during this period. Maximum rainfall 135mm was recorded at Satkhira in Khulna division and minimum rainfall “trace” was recorded at Cox’sBazar in Chittagong division.

Highest maximum temperature was recorded in Dhaka Division 26.4-32.5<sup>0</sup>C, Chittagong Division 24.5-33.0<sup>0</sup>C, Sylhet Division 27.8-32.8<sup>0</sup>C, Rajshahi Division 28.5-33.0<sup>0</sup>C, Rangpur Dsivision 27.7-32.2<sup>0</sup>C Khulna Division 25.0-33.2<sup>0</sup>C and Barisal Division 27.6-33.8<sup>0</sup>C.

Extreme maximum temperature was recorded at Faridpur in Dhaka Division 32.5<sup>0</sup>C, at Cox’sbazar in Chittagong Division 33.0<sup>0</sup>C, at Sylhet in Sylhet Division 32.8<sup>0</sup>C, at Bogra in Rajshahi Division 33.0<sup>0</sup>C, at Rangpur & Dinajpur in Rangpur Division 32.2<sup>0</sup>C, at Jessore in Khulna Division 33.2<sup>0</sup>C and at Patuakhali in Barisal Division 33.8<sup>0</sup>C.

Lowest minimum temperature was recorded in Dhaka Division 16.5-23.3<sup>0</sup>C, Chittagong Division 17.4-24.6<sup>0</sup>C, Sylhet Division 14.2-23.0<sup>0</sup>C, Rajshahi Division 14.4-20.0<sup>0</sup>C, Rangpur Division 12.8-18.8<sup>0</sup>C, Khulna Division 16.2-22.0<sup>0</sup>C and Barisal Division 18.8-24.9<sup>0</sup>C

Extreme minimum temperature was recorded at Tangail in Dhaka Division 16.5<sup>0</sup>C, at Sitakunda in Chittagong Division 17.4<sup>0</sup>C, at Srimongal in Sylhet Division 14.2<sup>0</sup>C, at Rajshahi in Rajshahi Division 14.4<sup>0</sup>C, at Dinajpur in Rangpur division 12.8<sup>0</sup>C, at Chuadanga in Khulna Division 16.2<sup>0</sup>C and at Barisal in Barisal Division 18.8<sup>0</sup>C.

***Rainfall analysis and average temperature: -***

Name of the Divisions	Name of the Stations	Total Rainfall in (mm)	Normal Rainfall in (mm)	Deviation in %	Total Rainy days	Average Max Humidity in %	Average Min Humidity in %	Average Max. temp in °C	Average Normal Max. temp in °C	Average Min. temp in °C	Average Normal Min. temp in °C
Dhaka	Dhaka	9	7	29	02	085	039	30.6	29.5	21.0	17.3
	Mymensingh	4	7	-43	01	096	052	29.5	28.1	18.4	16.2
	Faridpur	3	4	-25	01	094	045	31.0	29.3	20.1	16.3
	Madaripur	68	10	580	02	099	042	31.1	29.8	20.1	16.4
	Tangail	15	9	67	01	094	038	30.5	28.6	20.1	16.0
Chittagong	Chittagong	8	1	700	04	**	**	30.5	29.0	20.1	17.3
	Sitakunda	55	5	1000	03	**	**	**	29.7	**	16.2
	Rangamati	75	6	1150	03	097	022	30.1	30.1	19.7	16.6
	Cox'sBazar	Trace	6	***	02	094	060	30.3	29.8	22.5	18.4
	Teknaf	0	7	-100	00	**	**	**	29.7	**	18.2
	Hatiya	34	5	580	03	100	060	30.2	28.7	21.6	17.9
	Sandwip	12	7	71	03	097	062	30.3	28.4	21.7	18.1
	Kutubdia	3	5	-40	01	093	063	29.3	28.3	22.5	18.5
	Feni	35	8	338	03	096	053	30.5	29.4	21.3	17.0
	M.Court	28	7	300	03	098	053	30.6	29.3	21.7	17.4
	Chandpur	28	4	600	02	**	**	**	29.1	**	16.9
Sylhet	Sylhet	3	11	-73	02	088	042	30.6	28.6	19.2	15.9
	Srimongal	64	14	357	02	098	028	30.3	29.2	18.3	14.6
Rajshahi	Rajshahi	0	4	-100	00	097	038	31.0	29.4	17.5	14.6
	Bogra	0	4	-100	00	094	026	30.8	28.5	18.0	15.5
	Ishurdi	1	6	-83	01	097	032	30.5	29.1	17.7	14.1
Rangpur	Rangpur	0	3	-100	00	089	035	29.9	27.1	16.5	14.1
	Dinajpur	0	2	-100	00	097	031	29.8	27.6	15.6	14.1
Khulna	Khulna	94	7	1243	03	097	057	30.2	30.0	21.0	16.9
	Jessore	7	5	40	02	094	043	31.1	30.5	19.9	16.2
	Chuadanga	11	5	120	01	094	044	30.3	30.0	18.6	15.7
	Satkhira	135	9	1400	04	**	**	**	30.1	**	17.2
Barisal	Barisal	30	5	500	03	098	047	31.0	29.7	21.0	16.6
	Bhola	35	8	338	02	097	049	31.0	29.6	21.7	17.7
	Patuakhali	53	6	783	03	078	054	31.9	29.8	53.4	17.9
	Khepupara	13	11	18	02	097	055	31.5	29.7	21.5	18.3

N.B. Analyses contained in this bulletin are based on preliminary un-checked data. \*\* Data not received. \*\*\* Data not available.