



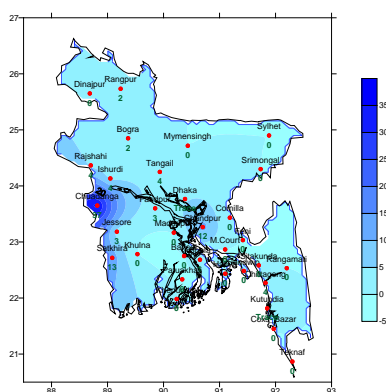
Government of the People's Republic of Bangladesh  
Bangladesh Meteorological Department  
(Agro-meteorology Division)  
Meteorological Complex, Agargaon, Dhaka-1207.

Agm-3 (2)/2015/ 40

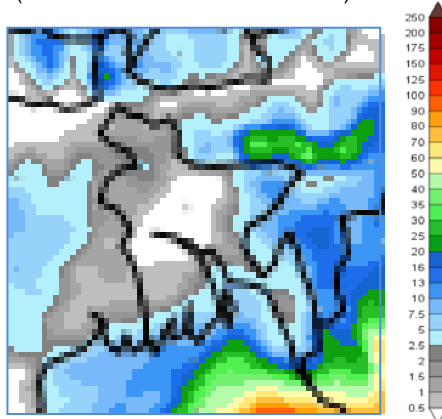
Issue date: 25-10-2015

**Forecast for the period: 25.10.2015 to 31.10.2015**

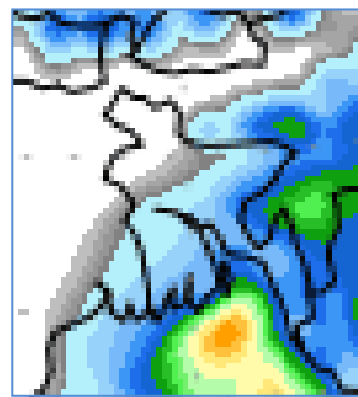
Spatial distribution of Rainfall  
(Period: 15-10-2015 to 21-10-2015)



Accumulative Rainfall forecast  
(Period: 25-10-2015 to 31-10-2015)



Extended Outlook for accumulative rain  
(Period: 01-11-2015 to 07-11-2015)



**Highlights:**

Country average of bright sunshine hour was 7.75 hours per day during last week.

Country average of free water loss during the previous week was averaged 3.74 mm per day.

**Weather Forecast and Advisory for the Period of 25.10.2015 to 31.10.2015.**

Bright sunshine hour is expected to be between 7.0 to 8.0 hours per day during this week.

Average of free water loss during the next week is expected to be between 3.0 mm to 4.0 mm per day.

- Seasonal low lies over South Bay.
- Weather may remain mainly dry with temporary partly cloudy sky over the country during the first half of this period.
- Light (04-10 mm) to moderate (11-22 mm) rain/thunder shower with temporary gusty or squally wind may occur at many places over coastal region and one or two places elsewhere over the country during the end of this period.
- Maximum temperature may remain nearly unchanged and slight fall in night temperatures are expected over the country during the first half of this period. Slight fall in maximum temperature and slight rise in night temperature are expected over the country during the end of this period.

(Mahnaz Khan)

Deputy Director

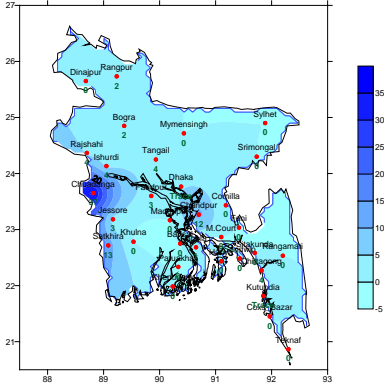
For Director

Phone: 8130305(Office)

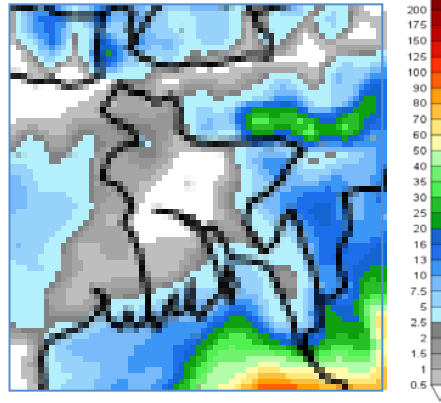
## Bengali Version

পূর্বাভাস, সময়: ২৫-১০-২০১৫ থেকে ৩১-১০-২০১৫

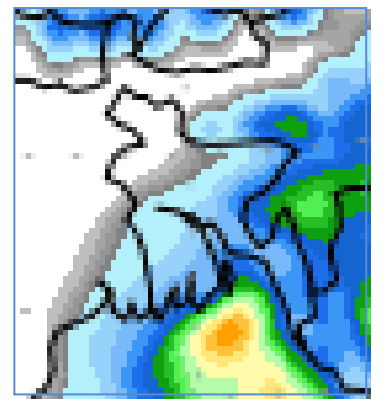
Spatial distribution of Rainfall  
(Period: 15-10-2015 to 21-10-2015)



Accumulative Rainfall forecast  
(Period: 25-10-2015 to 31-10-2015)



Extended Outlook for accumulative rain  
(Period: 01-11-2015 to 07-11-2015)



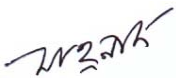
### প্রধান বৈশিষ্ট্য সমূহঃ-

গত সপ্তাহে দেশের দৈনিক উজ্জ্বল সূর্যকিরণ কালের গড় ৭.৭৫ ঘন্টা ছিল।  
গত সপ্তাহে দেশের দৈনিক বাষ্পীভবনের গড় ৩.৭৪ মিঃ মিঃ ছিল।

### আবহাওয়ার পূর্বাভাসঃ- ২৫-১০-২০১৫ থেকে ৩১-১০-২০১৫ ইং পর্যন্ত।

এ সপ্তাহে দৈনিক উজ্জ্বল সূর্য কিরণ কাল ৭.০ থেকে ৮.০ ঘন্টার মধ্যে থাকতে পারে।  
আগামী সপ্তাহের বাষ্পীভবনের দৈনিক গড় মান ৩.০ মিঃ মিঃ থেকে ৪.০ মিঃমিঃ থাকতে পারে।

- মৌসুমী লঘুচাপটি দক্ষিণ বঙ্গোপসাগরে অবস্থান করছে।
- এ সময়ের প্রথমার্ধে সারাদেশের আকাশ আংশিক মেঘলাসহ আবহাওয়া প্রধানতঃ শুষ্ক থাকতে পারে।
- এ সময়ের শেষাংশে উপকূলীয় এলাকার অনেকস্থানে এবং দেশের অন্যান্য দু'এক স্থানে অস্থায়ী দমকা/ঝড়ো হাওয়াসহ হালকা (০৪-১০মিঃমিঃ) থেকে মাঝারী ধরনের (১১-২২ মিঃমিঃ) বৃষ্টি/বজ্রবৃষ্টি হতে পারে।
- এ সময়ের প্রথমার্ধে সারাদেশের সর্বোচ্চ তাপমাত্রা প্রায় অপরিবর্তিত এবং রাতের তাপমাত্রা সামান্য হ্রাস পেতে পারে এবং দ্বিতীয়ার্ধে সর্বোচ্চ তাপমাত্রা সামান্য হ্রাস ও রাতের তাপমাত্রা সামান্য বৃদ্ধি পেতে পারে।

  
(মাহ্নাজ খান)  
উপ-পরিচালক  
পরিচালকের পক্ষে  
ফোনঃ ৮১৩০৩০৫(দপ্তর)

বিঃ দ্রঃ- পূর্বাভাসের ডিজিটাল map দেখতে visit করুন- [www.bmd.gov.bd](http://www.bmd.gov.bd)

**Short Weather Description, Period: 15.10.2015 to 21.10.2015**

Weather was mainly dry over the country during this period.

Maximum rainfall 37 mm was recorded at **Chuadanga** in Khulna division which was 32% above normal and minimum rainfall "Trace" mm was recorded at **Dhaka** in Dhaka division and at Kutubdia in Chittagong division which was not measurable.

Highest maximum temperature was recorded in Dhaka Division 31.0-33.8°C, Chittagong Division 29.1-34.2°C, Sylhet Division 32.5-34.3°C, Rajshahi Division 29.5-34.2°C, Rangpur Division 31.6-33.7°C Khulna Division 30.7-35.2°C and Barisal Division 31.0-34.0°C.

Extreme maximum temperature was recorded at Madaripur in Dhaka Division 33.8°C, at Chandpur in Chittagong Division 34.2°C, at Sylhet in Sylhet Division 34.3°C, at Bogra in Rajshahi Division 34.2°C, at Rangpur in Rangpur Division 33.7°C, at Jessore in Khulna Division 35.2°C and at Patuakhali in Barisal Division 34.0°C.

Lowest minimum temperature was recorded in Dhaka Division 22.2-24.4°C, Chittagong Division 21.8-25.5°C, Sylhet Division 20.7-23.8°C, Rajshahi Division 21.7-23.3°C, Rangpur Division 21.9-23.8°C, Khulna Division 22.4-25.0°C and Barisal Division 22.0-24.5°C

Extreme minimum temperature was recorded at Tangail in Dhaka Division 22.2°C, at Hatiya in Chittagong Division 21.8°C, at Srimongal in Sylhet Division 20.7°C, at Rajshahi & Ishurdi in Rajshahi Division 21.7 °C, at Dinajpur in Rangpur division 21.9°C, at Jessore & Chuadanga in Khulna Division 22.4°C and at Khepupara in Barisal Division 22.0°C.

***Rainfall analysis and average temperature: -***

| Name of the Divisions | Name of the Stations | Total Rainfall In (mm) | Normal Rainfall In (mm) | Deviation In % | Total Rainy days | Average Max Humidity In % | Average Min Humidity In % | Average Max. temp In °C | Average Normal Max. temp In °C | Average Min. temp In °C | Average Normal Min. temp In °C |
|-----------------------|----------------------|------------------------|-------------------------|----------------|------------------|---------------------------|---------------------------|-------------------------|--------------------------------|-------------------------|--------------------------------|
| <b>Dhaka</b>          | Dhaka                | Trace                  | 42                      | ***            | 01               | 093                       | 051                       | 32.5                    | 31.5                           | 23.9                    | 23.8                           |
|                       | Mymensingh           | 0                      | 39                      | -100           | 00               | 097                       | 060                       | 033                     | 31.1                           | 023                     | 23.0                           |
|                       | Faridpur             | 3                      | 37                      | -92            | 01               | 096                       | 055                       | 33.0                    | 31.4                           | 23.7                    | 24.0                           |
|                       | Madaripur            | 0                      | 47                      | -100           | 00               | 097                       | 048                       | 32.9                    | 31.9                           | 23.5                    | 23.6                           |
|                       | Tangail              | 4                      | 34                      | -88            | 01               | 095                       | 055                       | 32.8                    | 31.5                           | 22.5                    | 23.4                           |
| <b>Chittagong</b>     | Chittagong           | 4                      | 70                      | -94            | 01               | **                        | **                        | 31.9                    | 31.6                           | 24.5                    | 23.8                           |
|                       | Sitakunda            | 0                      | 62                      | -100           | 00               | **                        | **                        | **                      | 31.9                           | **                      | 23.6                           |
|                       | Rangamati            | 0                      | 36                      | -100           | 00               | 082                       | 060                       | 33.2                    | 31.1                           | 22.6                    | 22.9                           |
|                       | Cox's Bazar          | 0                      | 43                      | -100           | 00               | 097                       | 063                       | 32.4                    | 31.8                           | 24.6                    | 24.1                           |
|                       | Teknaf               | 0                      | 61                      | -100           | 00               | 098                       | 057                       | 032                     | 31.2                           | 024                     | 23.8                           |
|                       | Hatiya               | 0                      | 54                      | -100           | 00               | **                        | **                        | **                      | 30.8                           |                         | 24.4                           |
|                       | Sandw ip             | 0                      | 66                      | -100           | 00               | 098                       | 061                       | 32.4                    | 31.0                           | 23.8                    | 24.1                           |
|                       | Kutubdia             | Trace                  | 42                      | ***            | 01               | 095                       | 064                       | 31.9                    | 31.3                           | 24.6                    | 24.5                           |
|                       | Feni                 | 0                      | 44                      | -100           | 00               | 098                       | 062                       | 32.2                    | 31.2                           | 23.8                    | 23.2                           |
|                       | M.Court              | 0                      | 32                      | -100           | 00               | 098                       | 058                       | 32.8                    | 31.1                           | 24.8                    | 24.0                           |
|                       | Chandpur             | 12                     | 29                      | -59            | 01               | 080                       | 059                       | 33.7                    | 31.4                           | 24.5                    | 24.1                           |
|                       | Comilla              | 0                      | 27                      | -100           | 00               | **                        | **                        | **                      | 31.3                           | **                      | 23.3                           |
| <b>Sylhet</b>         | Sylhet               | 0                      | 36                      | -100           | 00               | 093                       | 053                       | 33.7                    | 31.1                           | 23.4                    | 22.7                           |
|                       | Srimongal            | 0                      | 31                      | -100           | 00               | 098                       | 053                       | 033                     | 31.2                           | 021                     | 22.1                           |
| <b>Rajshahi</b>       | Rajshahi             | 4                      | 23                      | -83            | 02               | 099                       | 059                       | 32.5                    | 31.4                           | 22.5                    | 22.8                           |
|                       | Bogra                | 2                      | 23                      | -91            | 02               | 096                       | 052                       | 33.1                    | 31.7                           | 19.7                    | 23.1                           |
|                       | Ishuardi             | 4                      | 23                      | -83            | 01               | 098                       | 052                       | 32.0                    | 31.4                           | 22.7                    | 22.9                           |
| <b>Rangpur</b>        | Rangpur              | 2                      | 28                      | -93            | 01               | **                        | **                        | **                      | 29.9                           | **                      | 21.8                           |
|                       | Dinajpur             | 0                      | 27                      | -100           | 00               | 099                       | 051                       | 32.7                    | 30.8                           | 22.6                    | 22.2                           |
| <b>Khulna</b>         | Khulna               | 0                      | 29                      | -100           | 00               | 098                       | 054                       | 33.5                    | 31.8                           | 24.5                    | 24.0                           |
|                       | Jessore              | 3                      | 22                      | -86            | 03               | 095                       | 054                       | 34.0                    | 32.3                           | 23.1                    | 23.2                           |
|                       | Chuadanga            | 37                     | 28                      | 32             | 03               | 097                       | 061                       | 32.4                    | 32.1                           | 23.1                    | 23.4                           |
|                       | Satkhira             | 13                     | 27                      | -52            | 02               | 098                       | 052                       | 32.8                    | 32.1                           | 24.0                    | 23.4                           |
| <b>Barisal</b>        | Barisal              | 0                      | 38                      | -100           | 00               | 099                       | 062                       | 32.5                    | 31.6                           | 23.8                    | 23.6                           |
|                       | Bhola                | 1                      | 41                      | -98            | 01               | 099                       | 058                       | 033                     | 31.7                           | 024                     | 23.8                           |
|                       | Patuakhali           | 0                      | 40                      | -100           | 00               | 099                       | 062                       | 33.0                    | 31.4                           | 24.1                    | 24.2                           |
|                       | Khepupara            | 0                      | 72                      | -100           | 00               | 099                       | 062                       | 32.6                    | 31.1                           | 23.8                    | 24.2                           |

N.B. Analyses contained in this bulletin are based on preliminary un-checked data. \*\* Data not received. \*\*\* Data not available.