



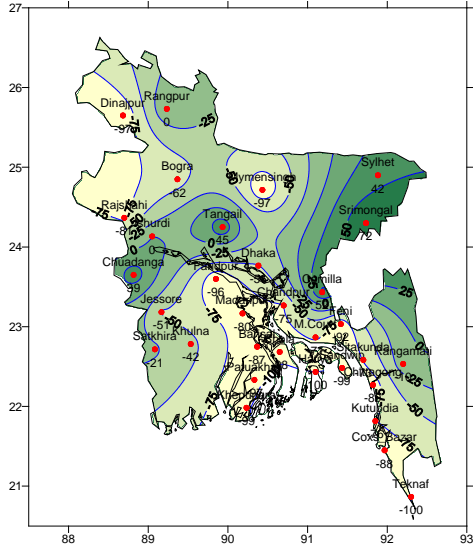
**Government of the Peoples' Republic of Bangladesh
Bangladesh Meteorological Department
(Meteorological Headquarter)
Meteorological Complex, Agargaon, Dhaka-1207.**

Agm-3 (2)/2010/ 19

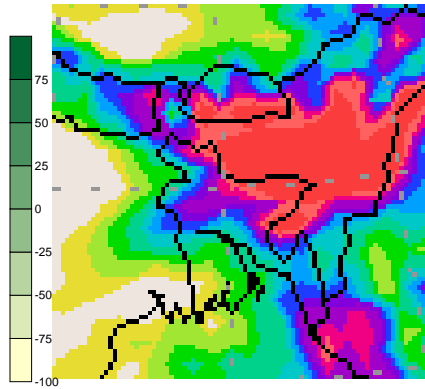
Issue date: 16-05-2010

Forecast for the period: 15.05.2010 to 21.05.2010

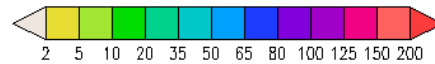
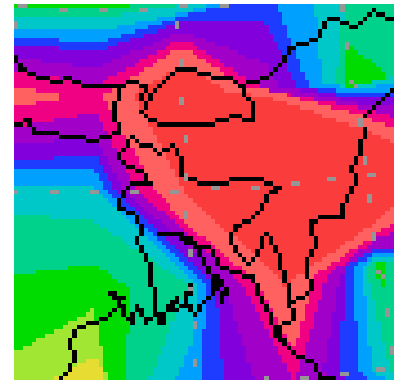
**Rainfall Departure as a percentage of Normal
Period: - 08.05.2010 to 14.05.2010**



**Accumulated Rainfall Forecast
(15-05-2010 to 21-05-2010)**



**Extended outlook for the next week
(22-05-2010 to 31-05-2010)**



Highlights:

Free water loss during last week was averaged 5.07 mm per day.

Sunshine hour during last week was averaged 8.08 hours per day.

Advisory for the period from 15.05.2010 to 21.05.2010.

Free water loss during the Period is expected to be between mm 4.75 to 5.75 mm per day.
Bright sunshine hour during the Period is expected to be between 7.0 to 8.0 hrs per day.

Weather:

- Light to moderate rain/thunder shower accompanied by temporary gusty/squally wind speed 40-60 km or more may occur at few places over Sylhet, Rangpur, Dhaka and Chittagong divisions and the regions of Jessore, Kustia, Rajshahi, Tangail, Pabna, Comilla, Noakhali, Bogra and one or two places else where over the country with a chance of moderately heavy to heavy falls at places over North and North-Eastern Part of the country with Asam and Meghalaya regions of India during this period.
- Slight fall in day and night temperature is expected over the country during the period.

(Md. Shameem Hassan Bhuiyan)
Meteorologist
For Director
Bangladesh Meteorological Department
Dhaka-1207.

Short Weather Description, Period: 08.05.2010 to 14.05.2010

Light to heavy rainfall was recorded over the country except Hatiya, Teknaf in Chittagong Division during the period.

Maximum rainfall 159 mm was recorded at Sylhet in Sylhet Division, which was 42% above normal

Minimum rainfall 1mm was recorded at Sandwip in Chittagong Division, Dinajpur in Rajshahi Division, Bhola and Khepupara in Barisal Division, which were -99%, -97%, -98% and -99% respectively.

Highest maximum temperature was recorded in Dhaka Division 31.0-37.5°C, Chittagong Division 32.2-36.7°C, Sylhet Division 28.5-35.0°C, Rajshahi Division 31.0-39.7°C, Khulna Division 33.6-38.7°C and Barisal Division 33.7-36.3°C

Extreme maximum temperature was recorded at Madaripur in Dhaka Division 37.5°C, at Chandpur in Chittagong Division 36.7°C, at Srimongal in Sylhet Division 35.0°C, at Ishurdi in Rajshahi Division 39.7°C, at Chuadanga in Khulna Division 38.7°C and at Patuakhali in Barisal Division 36.3°C

Lowest minimum temperature was recorded in Dhaka Division 21.2-29.4°C, Chittagong Division 22.5-29.5°C, Sylhet Division 20.9-26.5°C, Rajshahi Division 21.0-29.5°C, Khulna Division 21.0-29.3°C and Barisal Division 22.0-29.0°C

Extreme minimum temperature was recorded at Tangail in Dhaka Division 21.2°C, at Chittagong in Chittagong Division 22.5°C, at Srimongal in Sylhet Division 20.9°C, at Rajshahi in Rajshahi Division 21.0°C, at Satkhira in Khulna Division 21.0°C and at Barisal in Barisal Division 22.0°C.

Rainfall analysis and average temperature: -

Name of the Divisions	Name of the Stations	Total Rainfall in (mm)	Normal Rainfall in (mm)	Deviation in %	Total Rainy days	Average Max Humidity in %	Average Min Humidity in %	Average Max temp in °C	Average Normal Max temp in °C	Average Min temp in °C	Average Normal Min temp in °C
Dhaka	Dhaka	29	59	-51	1	92	52	35.8	33.5	27.8	24.4
	Mymensingh	2	69	-97	2	**	**	**	32.0	**	23.4
	Faridpur	2	45	-96	2	96	55	36.0	33.8	27.2	24.3
	Madaripur	10	51	-80	1	92	62	35.7	34.0	27.1	24.5
	Tangail	71	49	45	2	94	58	36.1	33.5	25.6	23.9
Chittagong	Chittagong	9	81	-89	4	74	29	34.6	32.3	26.7	24.7
Chittagong	Sitakunda	15	56	-73	2	**	**	**	32.6	**	24.5
	Rangamati	55	61	-10	2	95	44	34.3	33.2	25.7	23.7
	Cox'sBazar	5	41	-88	2	90	59	35.1	33.0	27.3	25.2
	Teknaf	0	40	-100	0	**	**	**	32.5	**	25.2
	Hatiya	0	56	-100	0	**	**	**	32.3	**	24.7
	Sandwip	1	69	-99	1	88	68	33.8	31.5	27.0	24.7
	Kutubdia	9	37	-76	3	90	52	34.6	32.6	27.1	25.3
	Feni	6	76	-92	2	98	54	33.9	32.6	26.7	24.3
	M.Court	17	59	-71	1	96	52	35.9	32.7	27.3	24.8
	Chandpur	13	53	-75	1	**	**	**	33.2	**	24.6
Comilla	96	63	52	2	93	59	34.9	32.8	26.1	23.9	
Sylhet	Sylhet	159	112	42	7	97	71	30.9	31.2	22.7	22.7
	Srimongal	143	83	72	5	97	51	33.8	32.6	23.1	22.9
Rajshahi	Rajshahi	6	31	-81	1	97	30	38.6	35.2	27.1	24.3
Rajshahi	Bogra	15	39	-62	2	95	31	36.8	33.3	26.1	23.8
	Rangpur	47	47	0	2	94	65	33.8	32.1	24.2	23.1
	Dinajpur	1	32	-97	1	95	43	35.9	32.9	25.7	22.9
	Ishurdi	40	40	0	1	96	29	37.6	34.6	27.4	24.0
Khulna	Khulna	21	36	-42	1	98	55	36.0	34.8	27.4	25.0
Khulna	Jessore	17	35	-51	1			36.72	35.7	27.3	24.8
	Chuadanga	32	23	39	1	97	43	37.1	36.1	26.9	25.2
	Satkhira	22	28	-21	1	97	58	35.9	35.3	27.4	25.5
Barisal	Barisal	6	47	-87	1	94	60	35.1	33.5	27.2	24.8
Barisal	Bhola	1	48	-98	1	**	**	**	33.1	**	25.1
	Patuakhali	2	65	-97	1	96	65	35.8	33.4	27.2	25.2
	Khepupara	1	79	-99	1	93	61	34.6	33.0	28.3	25.6

N.B. Analyses contained in this bulletin are based on preliminary un-checked data.