



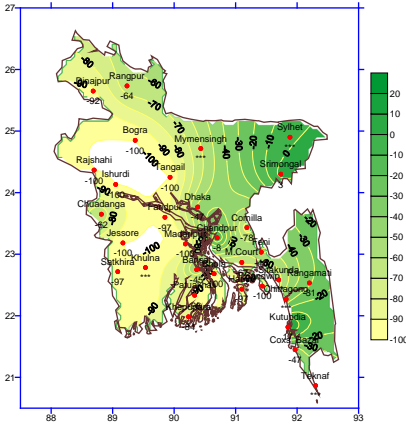
Government of the People's Republic of Bangladesh
Bangladesh Meteorological Department
(Agro meteorology Division)
Meteorological Complex, Agargaon, Dhaka-1207.

Agm-3 (2)/2011/ 41

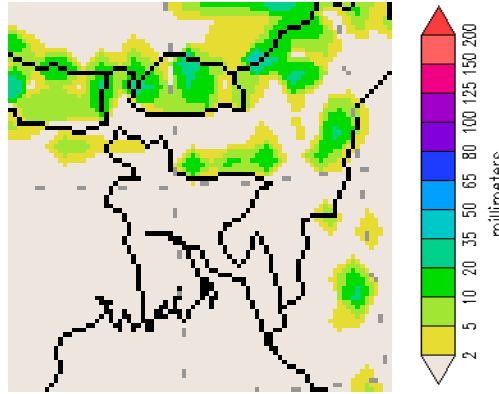
Issue date: 01-01-2011

Weekly Agromet forecast for the period: 01.11.2011 to 07.11.2011

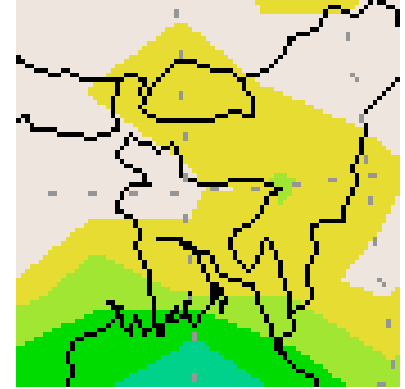
Rainfall Departure as a percentage of Normal
22-10-2011 to 31-10-2011



Accumulated Rainfall forecast
(01-11-2011 to 07-11-2011)



Extended Outlook for accumulated
Rainfall (08-11-2011 to 14-11-2011)



Highlights:

Free water loss during the previous week was averaged 3.07 mm per day.
Sunshine hour during the previous was averaged 7.42 hours per day.

Weather forecast and Advisory for the period of 01.11.2011 to 07.10.2011.

Free water loss during the next week is expected to be between 2.75 mm to 3.75 mm per day.
Bright sunshine hour during the next week is expected to be between 7.0 to 8.0 hrs per day.

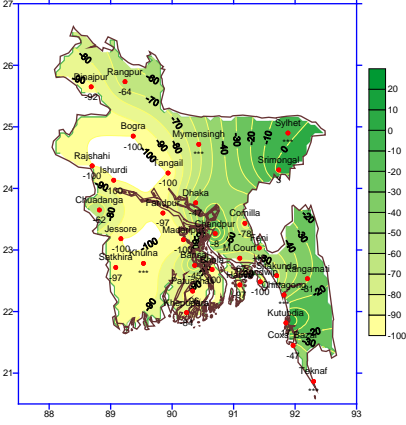
- Seasonal low lies over South Bay extending its trough to North Bay.
- Weather may remain mainly dry with partly cloudy sky over the country with a chance of light rain (4-10 mm)/ drizzle at one or two places over Northern part of the country during this period.
- Day and night temperature may be near normal and gradually decrease over the country during this period.
- Weather condition of this period may be favourable for application of fertilizer and other agricultural chemical.

(**Md. Shameem Hassan Bhuiyan**)
Meteorologist
For Director
Bangladesh Meteorological Department
Agargaon, Dhaka-1207
Phone : 8130305

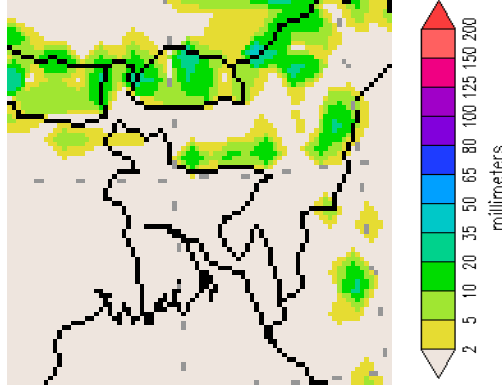
Bangla Version

পূর্বাভাস, সময়: ০১-১১-২০১১ থেকে ০৭-১১-২০১১

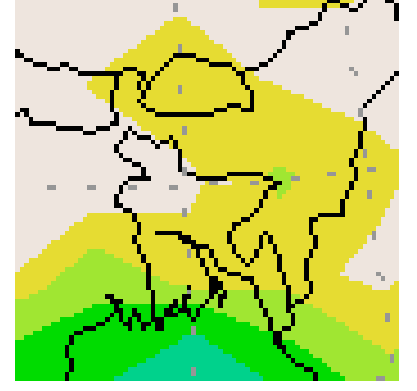
Rainfall Departures as a percentage of Normal
22-10-2011 to 31-0-211)



Accumulated Rainfall forecast
(01-11-2011 to 07-11-2011)



Extended Outlook for accumulated
Rainfall (08-11-2011 to 14-11-2011)



প্রধান বৈশিষ্ট্য সমূহঃ-

গত সপ্তাহের দৈনিক বাষ্পীভবনের গড় ৩.০৭ মিঃ মিঃ ছিল।
গত সপ্তাহের দৈনিক সূর্যকিরণ কালের গড় ৭.৪২ ঘন্টা ছিল।

আবহাওয়া পূর্বাভাসঃ- ০১-১১-২০১১ ইং থেকে ০৭-১১-২০১১ ইং পর্যন্ত।

আগামী সপ্তাহের বাষ্পীভবনের দৈনিক গড় মান ২.৭৫ মিঃমিঃ থেকে ৩.৭৫ মিঃমিঃ থাকতে পারে।
আগামী সপ্তাহের সূর্যকিরণকালের দৈনিক গড় মান ৭.০ ঘন্টা থেকে ৮.০ ঘন্টা থাকতে পারে।

- একটি মৌসুমী লঘুচাপ দক্ষিণ বঙ্গোপসাগরে অবস্থান করছে এবং তার বর্ধিতাংশটি উত্তর বঙ্গোপসাগর পর্যন্ত বিস্তৃত রয়েছে।
- এ সপ্তাহে সারাদেশের আবহাওয়া আংশিক মেঘলাসহ প্রধানতঃ শুষ্ক থাকতে পারে। সেই সাথে উত্তরাঞ্চলের দুই /এক জায়গায় হালকা (০৪-১০মিঃ মিঃ) /গুড়ি গুড়ি বৃষ্টির সম্ভবনা রয়েছে।
- এ সময়ে সারাদেশের দিন এবং রাতের তাপমাত্রা স্বাভাবিকের কাছাকাছি এবং তা ক্রমশঃ হ্রাস পেতে পারে।
- এ সপ্তাহের আবহাওয়া কৃষি রাসায়নিক উপকরণ ব্যবহারের উপযোগী থাকতে পারে।

(মোঃ শামীম হাসান ছইয়া)

আবহাওয়াবিদ

পরিচালকের পক্ষে

বাংলাদেশ আবহাওয়া অধিদপ্তর, ঢাকা-১২০৭।

Short Weather Description, Period: 22.10.2011 to 31.10.2011

Under the influence of Weak South west monsoon light to moderate rainfall was recorded at many places over the country. Weather was mainly dry elsewhere over the country.

Maximum rainfall 41 mm was recorded at Kutubdia in Chittagong division which was 17% above normal.

Minimum rainfall Trace was recorded at Mymensingh, Sylhet and Khulna which is not measurable.

Highest maximum temperature was recorded in Dhaka Division 29.0-32.8°C Chittagong Division 29.0-33.3°C, Sylhet Division 30.2-33.6°C, Rajshahi Division 30.0-33.3°C, Rangpur Division 29.5-32.4°C Khulna Division 30.0-33.8°C and Barisal Division 30.5-32.6°C

Extreme maximum temperature was recorded at Dhaka and Faridpur in Dhaka Division 32.8°C, at Sandwip in Chittagong Division 33.3°C, at Sylhet in Sylhet Division 33.6°C, at Bogra in Rajshahi Division 33.3°C, at Rangpur in Rangpur Division 32.4°C, at Jessore in Khulna 33.8°C and at Barisal, Patuakhali and Khepupara in Barisal Division 32.6°C

Lowest minimum temperature was recorded in Dhaka Division 19.4-24.4°C, Chittagong Division 20.0-25.0°C, Sylhet Division 18.5-23.0°C, Rajshahi Division 15.8-23.7°C, Rangpur Division 16.5-22.8°C, Khulna Division 17.0-24.6°C and Barisal Division 20.0-24.5°C

Extreme minimum temperature was recorded at Tangail in Dhaka Division 19.4°C, at Rangamati and Cox's Bazar in Chittagong Division 20.0°C, at Srimangal in Sylhet Division 18.5°C, at Rajshahi in Rajshahi Division 15.8°C, at Dinajpur in Rangpur division 16.5°C, at Chuadanga in Khulna Division 17.0°C and at Barisal, Patuakhali and Khepupara in Barisal Division 20.0°C.

Rainfall analysis and average temperature: -

Name of the Divisions	Name of the Stations	Total Rainfall in (mm)	Normal Rainfall in (mm)	Deviation in %	Total Rainy days	Average Max Humidity in %	Average Min Humidity in %	Average Max. temp in °C	Average Normal Max. temp in °C	Average Min. temp in °C	Average Normal Min. temp in °C
Dhaka	Dhaka	18	34	-47	02	092	041	31.6	31.2	23.1	22.3
	Mymensingh	Trace	22	***	01	**	**	**	30.9	**	21.3
	Faridpur	1	32	-97	02	096	035	31.9	30.9	22.6	22.4
	Madaripur	0	31	-100	00	097	052	31.4	31.4	022	22.1
	Tangail	0	46	-100	00	097	049	31.5	30.9	21.6	21.7
Chittagong	Chittagong	**	33	***	**	**	**	**	31.1	**	22.8
	Sitakunda	**	25	***	**	**	**	**	31.7	**	22.3
	Rangamati	24	35	-31	01	**	**	**	31.1	**	22.4
	Cox'sBazar	35	66	-47	02	**	**	**	31.7	**	23.7
	Teknaf	**	49	***	**	**	**	**	31.3	**	23.3
	Hatiya	1	33	-97	02	**	**	**	30.5	**	23.1
	Sandwip	0	36	-100	00	097	056	32.2	30.6	22.4	22.9
	Kutubdia	41	35	17	02	97	51	31.8	30.9	23.5	23.3
	Feni	16	31	-48	01	100	045	31.5	30.9	22.6	21.5
	M.Court	19	57	-67	01	097	054	31.6	30.5	24.0	22.9
	Chandpur	23	25	-8	01	096	060	32.2	30.7	18.6	22.5
Comilla	7	32	-78	01	99	46	31.4	30.9	22.1	21.8	
Sylhet	Sylhet	Trace	40	***	02	093	056	32.1	30.9	21.6	21.3
	Srimongal	32	31	3	02	098	041	31.6	30.8	19.8	20.0
Rajshahi	Rajshahi	0	16	-100	00	**	**	**	30.8	**	21.0
	Bogra	0	27	-100	00	095	033	32.4	31.5	21.9	21.4
	Ishurdi	0	25	-100	00	098	029	31.1	30.9	20.9	21.0
Rangpur	Rangpur	4	11	-64	02	096	053	30.7	29.9	021	20.5
	Dinajpur	1	13	-92	02	097	030	31.1	30.6	20.8	20.1
Khulna	Khulna	Trace	36	***	01	097	043	31.9	31.2	22.9	22.4
	Jessore	0	28	-100	00	**	**	32.6	31.6	021	21.1
	Chuadanga	15	39	-62	01	098	037	21.6	31.2	20.7	21.5
	Satkhira	1	38	-97	00	096	033	31.5	31.5	22.2	21.5
Barisal	Barisal	26	47	-45	01	099	057	31.9	31.2	22.3	22.0
	Bhola	0	33	-100	00	**	**	**	31.1	**	22.3
	Patuakhali	2	50	-96	01	**	**	**	30.8	**	22.8
	Khepupara	10	63	-84	002	082	033	32.0	30.7	023	22.8

N.B. Analyses contained in this bulletin are based on preliminary un-checked data. ** Data not received. *** Data not available.