



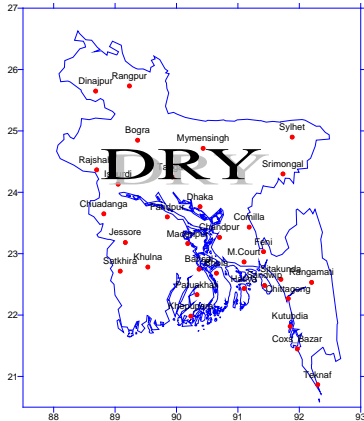
Government of the People's Republic of Bangladesh
Bangladesh Meteorological Department
(Agro meteorology Division)
Meteorological Complex, Agargaon, Dhaka-1207.

Agm-3 (2)/2012/ 06

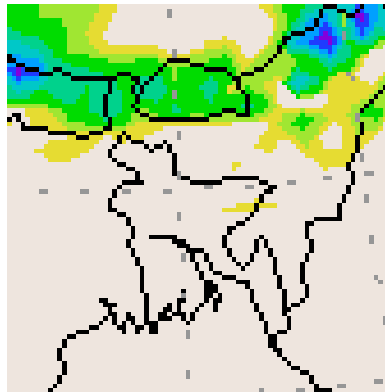
Issue date: 08-02-2012

Weekly Agromet forecast for the period: 08.02.12 to 14.02.2012

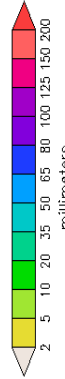
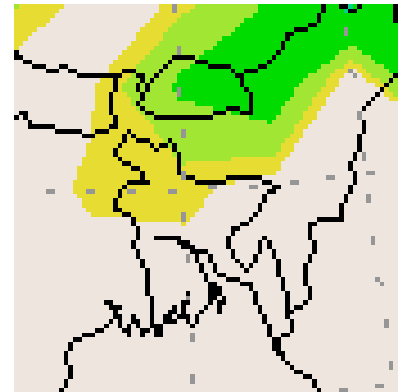
Rainfall Departure as a percentage of Normal
(01-02-2012 to 07-02-2012)



Accumulated Rainfall forecast
08-02-2012 to 14-02-2012)



Extended Outlook for accumulated
Rainfall (15-02-2012 to 21-02-2012)



Highlights:

Free water loss during the previous week was averaged 2.78 mm per day.
Sunshine hour during the previous was averaged 8.22 hours per day.

Weather forecast and Advisory for the period of 08.02.2012 to 14.02.2012.

Free water loss during the next week is expected to be between 2.50 mm to 3.50 mm per day.
Bright sunshine hour during the next week is expected to be between 7.75 to 8.75 hrs per day.

- A low lies over Bihar and adjoining areas. Seasonal low lies over South Bay.
- Weather is likely to remain mainly dry with temporary partly cloudy sky over the country with a chance of light rain/ drizzle at one or two places over Rajshahi, Rangpur, sylhet and Dhaka divisions during this period.
- Light fog may occur over the river basins and north to middle part of the country during mid night to till morning.
- Slight rise in maximum and minimum temperature is expected over the country during this period.
- Supplementary irrigation may require for high land boro crop field if moisture stress are present.

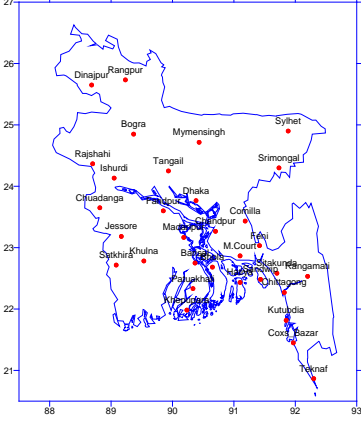
(Md. Abdur Rahim)
Meteorologist
Agromet Division

Bangladesh Meteorological Department
Phone: 8130305 (O)

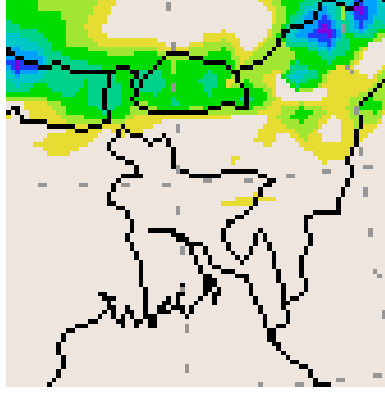
Bangla Version

পূর্বাভাস, সময়: ০৮-০২-২০১২ থেকে ১৪-০২-২০১২

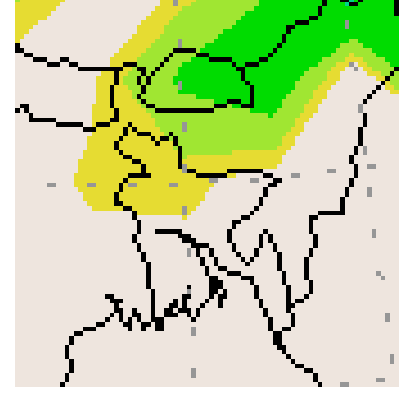
Rainfall Departure as a percentage of Normal
(01-02-2012 to 07-02-2012)



Accumulated Rainfall forecast
08-02-2012 to 14-02-2012)



Extended Outlook for accumulated
Rainfall (15-02-2012 to 21-02-2012)



প্রধান বৈশিষ্ট্য সমূহঃ-

গত সপ্তাহের দৈনিক বাষ্পীভবনের গড় ২.৭৮ মিঃ মিঃ ছিল।
গত সপ্তাহের দৈনিক সূর্যকিরণ কালের গড় ৮.২২ ঘন্টা ছিল।

আবহাওয়া পূর্বাভাসঃ- ০৮-০২-২০১২ইং থেকে ১৪-০২-২০১২ ইং পর্যন্ত।

আগামী সপ্তাহের বাষ্পীভবনের দৈনিক গড় মান ২.৫০ মিঃমিঃ থেকে ৩.৫০ মিঃমিঃ থাকতে পারে।
আগামী সপ্তাহের সূর্যকিরণকালের দৈনিক গড় মান ৭.৭৫ ঘন্টা থেকে ৮.৭৫ ঘন্টা থাকতে পারে।

- একটি লঘুচাপ বিহার এবং তৎসংলগ্ন এলাকা পর্যন্ত বিস্তৃত। মৌসুমী লঘুচাপটি দক্ষিণ বঙ্গোপসাগরে অবস্থান করছে।
- এ সপ্তাহে দেশের আকাশ অস্থায়ীভাবে আংশিক মেঘলাসহ আবহাওয়া প্রধানতঃ শুষ্ক থাকতে পারে। সেই সাথে রাজশাহী, রংপুর, সিলেট এবং ঢাকা বিভাগের দুই এক স্থানে হালকা বুষ্টি/গুড়ি গুড়ি বুষ্টি হতে পারে।
- মধ্য রাত থেকে সকাল পর্যন্ত দেশের উত্তর থেকে মধ্যাঞ্চল এবং নদী অববাহিকায় হালকা কুয়াশা পড়তে পারে।
- এ সপ্তাহে দিন ও রাতের সর্বোচ্চ ও সর্বনিম্ন তাপমাত্রা সামান্য বৃদ্ধি পেতে পারে।
- আর্দ্রতার স্বল্পতা দেখা দিলে উঁচু জমির বোরো ফসলে সম্পূরক সেচের প্রয়োজন হতে পারে।

(মোঃ আব্দুর রহিম)
আবহাওয়াবিদ
কৃষি আবহাওয়া মহাশাখা
বাংলাদেশ আবহাওয়া অধিদপ্তর,
ঢাকা-১২০৭।

Short Weather Description, period: 01.02.2012 to 07.02.2012

Weather was mainly dry over the country during the period.

Highest maximum temperature was recorded in Dhaka Division 24.0-30.4°C Chittagong Division 24.0-31.7, Sylhet Division 26.3-29.5°C, Rajshahi Division 23.8-29.5°C, Rangpur Division 23.5-27.4°C Khulna Division 23.6-31.6°C and Barisal Division 25.2-31.2°C

Extreme maximum temperature was recorded at Faridpur in Dhaka Division 30.4°C, at Sithakunda in Chittagong Division 31.7°C, at Srimongal in Sylhet Division 29.5°C, at Rajshahi in Rajshahi Division 29.5°C, at Dinajpur in Rangpur Division 27.4°C, at Jessore in Khulna 31.4°C and at Khepupara in Barisal Division 31.2°C.

Lowest minimum temperature was recorded in Dhaka Division 08.1-15.8°C, Chittagong Division 08.4-16.4°C, Sylhet Division 06.1-14.8°C, Rajshahi Division 07.0-13.5°C, Rangpur Division 8.0-13.5°C, Khulna Division 07.6-16.0°C and Barisal Division 09.5-15.6°C

Extreme minimum temperature was recorded at Tangail in Dhaka Division 08.1°C, at Sithakunda in Chittagong Division 08.4°C, at Srimongal in Sylhet Division 6.1°C, at Rajshahi in Rajshahi Division 7.0°C, at Dinajpur in Rangpur Division 8.0°C, at Jessore in Khulna Division 7.6°C and at Barisal in Barisal Division 9.5°C.

Rainfall analysis and average temperature:-

| Name of the Divisions | Name of the Stations | Total Rainfall In (mm) | Normal Rainfall In (mm) | Deviation In % | Total Rainy days | Average Max Humidity In % | Average Min Humidity In % | Average Max. temp in °C | Average Normal Max. temp in °C |
|-----------------------|----------------------|------------------------|-------------------------|----------------|------------------|---------------------------|---------------------------|-------------------------|--------------------------------|
| Dhaka | Dhaka | 0 | 4 | -100 | 00 | 066 | 022 | 23.6 | 26.6 |
| | Myrmensingh | 0 | 4 | -100 | 00 | 096 | 036 | 26.6 | 25.7 |
| | Faridpur | 0 | 7 | -100 | 00 | 096 | 025 | 27.4 | 25.9 |
| | Madaripur | 0 | 5 | -100 | 00 | 096 | 024 | 27.5 | 26.9 |
| | Tangail | 0 | 6 | -100 | 00 | ** | ** | ** | 26.3 |
| Chittagong | Chittagong | 0 | 3 | -100 | 00 | 093 | 026 | 29.4 | 27.0 |
| | Sitakunda | 0 | 4 | -100 | 00 | ** | ** | ** | 27.6 |
| | Rangamati | 0 | 3 | -100 | 00 | ** | ** | ** | 27.3 |
| | Cox'sBazar | 0 | 3 | -100 | 00 | ** | ** | ** | 27.9 |
| | Teknaf | 0 | 3 | -100 | 00 | ** | ** | ** | 28.2 |
| | Hatiya | 0 | 6 | -100 | 00 | ** | ** | ** | 26.3 |
| | Sandw ip | 0 | 4 | -100 | 00 | 098 | 025 | 28.3 | 26.3 |
| | Kutubdia | 0 | 5 | -100 | 00 | ** | ** | ** | 26.3 |
| | Feni | 0 | 10 | -100 | 00 | 098 | 023 | 27.5 | 26.9 |
| | M.Court | 0 | 6 | -100 | 00 | 098 | 023 | 27.4 | 26.5 |
| | Chandpur | 0 | 3 | -100 | 00 | 095 | 035 | 27.7 | 26.1 |
| Comilla | 0 | 7 | -100 | 00 | ** | ** | ** | 26.4 | |
| Sylhet | Sylhet | 0 | 18 | -100 | 00 | 094 | 034 | 28.3 | 26.3 |
| | Srimongal | 0 | 7 | -100 | 00 | ** | ** | ** | 26.7 |
| Rajshahi | Rajshahi | 0 | 3 | -100 | 00 | ** | ** | ** | 25.8 |
| | Bogra | 0 | 3 | -100 | 00 | 094 | 029 | 27.2 | 26.0 |
| | Ishurdi | 0 | 4 | -100 | 00 | 096 | 027 | 26.6 | 25.6 |
| Rangpur | Rangpur | 0 | 3 | -100 | 00 | ** | ** | ** | 24.5 |
| | Dinajpur | 0 | 2 | -100 | 00 | 097 | 018 | 25.9 | 24.9 |
| Khulna | Khulna | 0 | 7 | -100 | 00 | 098 | 034 | 27.4 | 26.9 |
| | Jessore | 0 | 7 | -100 | 00 | ** | ** | ** | 26.8 |
| | Chuadanga | 0 | 7 | -100 | 00 | 098 | 032 | 26.6 | 26.6 |
| | Satkhira | 0 | 9 | -100 | 00 | ** | ** | ** | 27.1 |
| Barisal | Barisal | 0 | 7 | -100 | 00 | ** | ** | ** | 26.8 |
| | Bhola | 0 | 5 | -100 | 00 | ** | ** | ** | 27.0 |
| | Patuakhali | 0 | 6 | -100 | 00 | 098 | 034 | 28.2 | 27.0 |
| | Khepupara | 0 | 3 | -100 | 00 | 098 | 022 | 28.6 | 27.1 |