



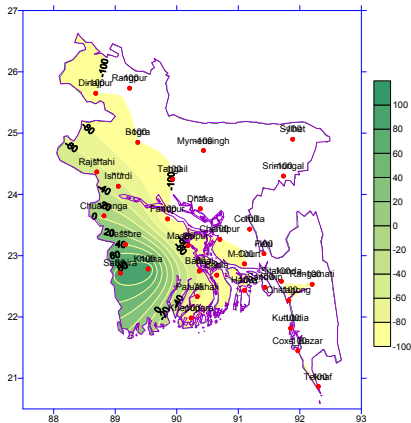
Government of the People's Republic of Bangladesh
Bangladesh Meteorological Department
(Agro meteorology Division)
Meteorological Complex, Agargaon, Dhaka-1207.

Agm-3 (2)/2012/08

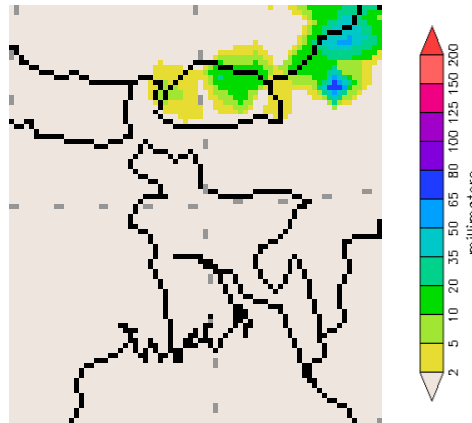
Issue date: 22-02-2012

Weekly Agromet forecast for the period: 22.02.12 to 29.02.2012

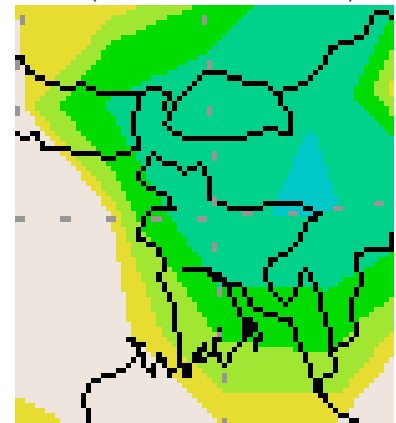
Rainfall Departure as a percentage of Normal
(15-02-2012 to 21-02-2012)



Accumulated Rainfall forecast
22-02-2012 to 29-02-2012)



Extended Outlook for accumulated
Rainfall (01-03-2012 to 07-03-2012)



Highlights:

Free water loss during the previous week was averaged 3.14 mm per day.

Sunshine hour during the previous was averaged 7.34 hours per day.

Weather forecast and Advisory for the period of 22.02.2012 to 29.02.2012.

Free water loss during the next week is expected to be between 3.25 mm to 3.75 mm per day.

Bright sunshine hour during the next week is expected to be between 8.00 hrs to 9.00 hrs per day.

- Seasonal low lies over South Bay.
- Weather is likely to remain mainly dry with temporary partly cloudy sky over the country during this period.
- Light fog may occur over the River basins of the country during mid night to till morning.
- Slight rise in maximum and minimum temperature is expected over the country during this period.
- Supplementary irrigation may necessary of boro crops over the country of this period.
- Weather of this week may be favourable for applying fertilizer and aerial spray.

(Md. Abdur Rahim)

Meteorologist

Agromet Division

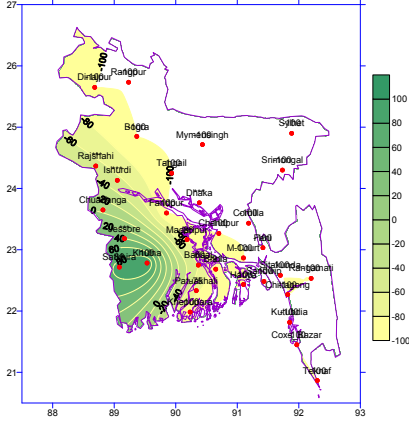
Bangladesh Meteorological Department

Phone: 8130305 (O)

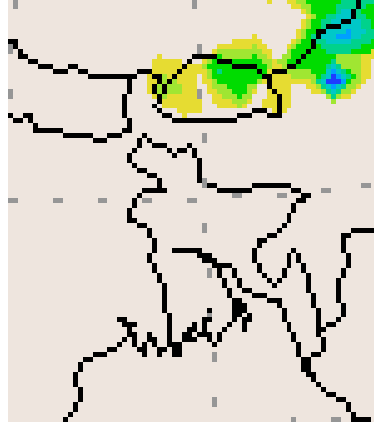
Bangla Version

পূর্বাভাস, সময়: ২২-০২-২০১২ থেকে ২৯-০২-২০১২

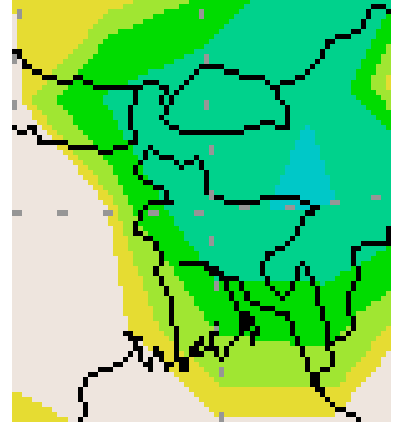
Rainfall Departure as a percentage of Normal
(15-02-2012 to 21-02-2012)



Accumulated Rainfall forecast
22-02-2012 to 29-02-2012)



Extended Outlook for accumulated
Rainfall (01-03-2012 to 07-03-2012)



প্রধান বৈশিষ্ট্য সমূহঃ-

গত সপ্তাহের দৈনিক বাষ্পীভবনের গড় ৩.১৪ মিঃ মিঃ ছিল।

গত সপ্তাহের দৈনিক সূর্যকিরণ কালের গড় ৭.৩৪ ঘন্টা ছিল।

আবহাওয়া পূর্বাভাসঃ- ২২-০২-২০১২ইং থেকে ২৯-০২-২০১২ ইং পর্যন্ত।

আগামী সপ্তাহের বাষ্পীভবনের দৈনিক গড় মান ৩.২৫ মিঃমিঃ থেকে ৩.৭৫ মিঃমিঃ থাকতে পারে।

আগামী সপ্তাহের সূর্যকিরণকালের দৈনিক গড় মান ৮.০০ ঘন্টা থেকে ৯.০০ ঘন্টা থাকতে পারে।

- একটি মৌসুমী লঘুচাপ দক্ষিণ বঙ্গোপসাগরে অবস্থান করছে।
- এ সময়ে দেশের আকাশ অস্থায়ীভাবে আংশিক মেঘলাসহ আবহাওয়া প্রধানতঃ শুষ্ক থাকতে পারে।
- এ সপ্তাহে মধ্য রাত থেকে সকাল পর্যন্ত দেশের নদী অববাহিকায় হালকা কুয়াশা পড়তে পারে।
- এ সপ্তাহে দিন ও রাতের সর্বোচ্চ ও সর্বনিম্ন তাপমাত্রা সামান্য বৃদ্ধি পেতে পারে।
- এ সময়ে বোরো শস্যে সম্পূর্ণক সেচের প্রয়োজন হতে পারে।
- এ সপ্তাহের আবহাওয়া সার প্রয়োগ ও উপর থেকে কীটনাশক প্রয়োগের উপযোগী থাকতে পারে।

(মোঃ আব্দুর রহিম)

আবহাওয়াবিদ

কৃষি আবহাওয়া মহাশাখা

বাংলাদেশ আবহাওয়া অধিদপ্তর,

ঢাকা-১২০৭।

Short Weather Description, period: 15.02.2012 to 21.02.2012

Weather was mainly dry except a few places over the country during the period.

Maximum rainfall 14 mm was recorded at Khulna in Khulna division which was 100% above normal.

Minimum rainfall 'Trace' was recorded at Dhaka, Rajshahi, Ishurdi and Jessore which were not measurable.

Highest maximum temperature was recorded in Dhaka Division 26.0-30.6°C Chittagong Division 27.8-33.6, Sylhet Division 28.7-30.8°C, Rajshahi Division 27.2-30.5°C, Rangpur Division 26.3-29.5°C Khulna Division 23.8-31.4°C and Barisal Division 26.6-32.2°C

Extreme maximum temperature was recorded at Faridpur in Dhaka Division 33.6°C, at Teknaf in Chittagong Division 33.6°C, at Sylhet in Sylhet Division 30.8°C, at Ishurdi and Bogra in Rajshahi Division 30.5°C, at Dinajpur in Rangpur Division 29.5°C, at Jessore in Khulna 31.4°C and at Khepupara in Barisal Division 32.2°C.

Lowest minimum temperature was recorded in Dhaka Division 11.8-20.3°C, Chittagong Division 12.0-22.0°C, Sylhet Division 8.7-17.0°C, Rajshahi Division 10.5-19.0°C, Rangpur Division 11.7-17.8°C, Khulna Division 11.2-19.2°C and Barisal Division 13.0-19.3°C

Extreme minimum temperature was recorded at Madaripur in Dhaka Division 11.8°C, at Sitakunda in Chittagong Division 12.0°C, at Srimongal in Sylhet Division 8.7°C, at Rajshahi in Rajshahi Division 10.5°C, at Dinajpur in Rangpur Division 11.7°C, at Jessore and Chuadanga in Khulna Division 11.2°C and at Barisal in Barisal Division 13.0°C.

Rainfall analysis and average temperature:-

Name of the Divisions	Name of the Stations	Total Rainfall in (mm)	Normal Rainfall in (mm)	Deviation in %	Total Rainy days	Average Max Humidity in %	Average Min Humidity in %	Average Max. temp in °C	Average Normal Max. temp in °C	Average Min. temp in °C	Average Normal Min. temp in °C
Dhaka	Dhaka	Trace	6	***	01	084	028	28.9	28.9	17.1	16.8
	Mymensingh	0	4	-100	00	097	041	27.9	27.7	15.0	15.7
	Faridpur	0	5	-100	00	096	019	29.0	28.6	15.8	15.8
	Madaripur	1	7	-86	01	098	031	29.1	29.2	15.0	16.1
	Tangail	0	8	-100	00	096	036	28.8	28.0	15.1	15.3
Chittagong	Chittagong	0	2	-100	00	098	027	32.1	28.5	17.6	16.9
	Sitakunda	0	9	-100	00	**	**	**	29.1	**	15.9
	Rangamati	0	8	-100	00	094	017	31.2	29.3	14.6	16.3
	Cox'sBazar	0	4	-100	00	**	**	**	29.2	**	18.1
	Teknaf	0	2	-100	00	**	**	**	29.3	**	18.0
	Hatiya	0	6	-100	00	**	**	**	28.1	**	17.5
	Sandw ip	0	9	-100	00	096	029	30.7	27.7	15.6	17.7
	Kutubdia	0	11	-100	00	092	040	29.1	27.7	17.9	17.7
	Feni	0	9	-100	00	098	027	30.0	28.8	15.5	16.6
	M.Court	0	6	-100	00	096	037	29.7	28.8	16.5	16.9
	Chandpur	0	6	-100	00	097	036	29.7	28.3	16.0	16.8
Cornilla	0	5	-100	00	096	040	28.5	28.2	15.9	16.3	
Sylhet	Sylhet	0	11	-100	00	086	032	29.8	27.9	15.1	15.3
	Srimongal	0	8	-100	00	096	017	29.1	28.9	11.7	13.7
Rajshahi	Rajshahi	Trace	2	***	00	096	021	28.9	28.9	14.1	14.2
	Bogra	0	3	-100	00	065	024	28.7	28.1	16.1	15.1
	Ishurdi	Trace	3	***	00	**	**	**	28.5	**	13.9
Rangpur	Rangpur	0	3	-100	00	**	**	**	26.6	**	13.8
	Dinajpur	0	2	-100	00	098	027	27.7	27.0	14.7	13.6
Khulna	Khulna	14	7	100	02	**	**	**	29.4	**	16.3
	Jessore	Trace	5	***	00	**	**	**	29.6	**	15.6
	Chuadanga	0	6	***	00	098	024	28.6	29.1	14.9	15.0
	Satkhira	13	7	86	02	098	036	28.1	29.6	16.5	16.7
Barisal	Barisal	2	5	-60	01	**	**	**	29.0	**	16.1
	Bhola	1	11	-91	01	**	**	**	28.8	**	16.9
	Patuakhali	2	8	-75	01	099	040	30.6	29.2	16.3	17.4
	Khepupara	0	5	-100	00	098	026	31.3	29.1	16.9	17.7

