



Summary of Agromet Advisory Services for different States of the country
Issued by
Agricultural Meteorology Division, India Meteorological
Department, Pune, India

Thursday, 30th November, 2006

(For the period 30th November to 4th December, 2006)

The extended version of the bulletin is also available at <http://imdagrmet.org>

North West India (Haryana, Punjab, Rajasthan, Uttar Pradesh, Delhi, Himachal Pradesh, Jammu& Kashmir and Uttaranchal)

Punjab

Weather remained mainly dry in the State during the period.

Mainly dry weather is likely over the State.

Advisories

- As there was no significant rainfall during last week and weather is likely to be mainly dry over the State for next three days, apply irrigation to bring the soil moisture to its field capacity in **sugarcane, gram, lentil and wheat**.
- Continue sowing of **rabi oil seeds**. Start sowing of late varieties of **wheat** i.e. PBW 396, PBW 299, PBW 175, 373, 138 and TL 1210.
- Make necessary arrangements to protect the **rabi oilseed, gram, lentil, wheat and vegetable** crops from cold injury. Apply light irrigation and arrange for smoke around the field to prevent frost injury.

Haryana

Weather was mainly dry in the State during the period.

Mainly dry weather is likely over the State.

Advisories

- As there was no significant rainfall during last week and weather is likely to be mainly dry over the State for next three days, apply irrigation to bring the soil moisture to its field capacity in **sugarcane, gram, lentil and wheat**.
- Continue sowing of **gram, lentil and rabi oil seeds**. Start sowing of late varieties of **wheat** i.e. Sonalika, WH-291, 396, PBW 373,138 and RAJ-3765.
- Incidence of shoot borer, top borer, gurdaspur borer, pyrilla, termite and red rot is reported in **sugarcane**. To control pyrilla spray 600-800ml malathion in 800 lit of water per acre.

Rajasthan

Weather remained dry in the State.

Mainly dry weather is likely over the State.

Advisories

- Complete harvesting matured crop of **cotton**.
- This is proper time for sowing of **barley, mustard, gram, cumin and wheat**. Continue land preparation and sowing. Undertake seed treatment before sowing.

- Apply pre sowing irrigation before sowing of **wheat**. Select among GW-173,190, PBW-343, HD-2329, Raj-1482, 3077, 3765 etc., for sowing.
- Late sowing of **gram** may be continued with Pusa-208, RSG-44, C-235 etc.

Uttar Pradesh

Cold wave conditions prevailing in some parts of U.P. and weather was mainly dry in all divisions of U.P on 27th & 28th November. Weather was mainly dry in all divisions of U.P. on 29th November.

Mainly dry weather is likely over the State.

Advisories

- There was no significant rainfall during last week and mainly dry weather is likely over the State for next three days. Under the circumstances, apply irrigation to bring the soil moisture to its field capacity in **rabi** oilseeds, pulses and winter vegetable crops.
- Continue weeding and hoeing along with top dressing of nitrogen in **winter vegetables**, and **rabi** oilseeds.
- Sowing of **rabi** wheat, and **barley** crops may be completed.
- Harvesting of **sugarcane** and **kharif** vegetables may be continued.
- As there is chance of occurrence of frost, farmers are advised to arrange for smoking around the field to save the crops from frost injury.

Himachal Pradesh

The sky was partly cloudy during the period.

Mainly dry weather is likely over the State. Subsequently snow fall activity may commence over the State from 3rd November.

Advisories

- As there was no significant rain during last week in most of the districts of the State, apply irrigation to **vegetable** crops, **gram** and early sown **wheat** and **barley** wherever crops are at vegetative stage.
- Continue land preparation and sowing of **methi** and **palak** in the low and mid hills and nursery sowing and transplanting of **cauliflower** and **cabbage** in low and mid hills and sowing of **wheat**, **barley**, **radish**, **turnip** and **carrot**.
- Select varieties from HPW-42 and HS-295 for late sowing of **wheat**, and Vimal (HBL-113) Dolma; Sonu (HBL-87); Gopi (HBL-316); Harit HBL-276) for **barley**.
- As there is chance of occurrence of frost, farmers are advised to arrange for smoking around the field to save the crops from frost injury.

Uttaranchal

Light rain was recorded at a few places on 23rd November. Weather remained mainly dry during rest of the period. Sky remained mainly clear to generally cloudy during the week.

Mainly dry weather is likely over the State.

Advisories

- There was no significant rainfall during last week and mainly dry weather is likely over the State. Under the circumstances, apply irrigation to **pea**, **toria**, **potato** and **sugarcane** to bring the soil moisture to its field capacity.
- Carry out inter cultural operation, application of fertilizer and plant protection measures to **mango**, **toria**, and **potato** crops.
- Continue sowing of **wheat**.
- Apply light irrigation and arrange for smoke around the field to prevent the crops from frost injury.

Jammu & Kashmir

Weather remained mainly dry over J & K State.

Mainly dry weather is likely over the State during next 48 hours. Subsequently snow fall activity may commence over the State from 3rd November.

Advisories

- Apply irrigation and arrange for smoke near the field in Jammu & Kashmir divisions to safeguard the crops from cold/frost injury.
- Continue sowing of **methi**, **coriander** and **spinach** in Kashmir division. Continue nursery sowing for **onion**.
- Continue sowing of **brown sarson** (Kashmir division), **gram** (Jammu division), **mustard**, **pea**, **lentil**, **toria** and **wheat** to utilize residual moisture. Before sowing, undertake ploughing followed by planking to conserve moisture.
- Prevailing weather conditions in Jammu division may be favourable for the infestation of stem fly in **pea** crop. Monitor the crop and if damage exceeds ETL, spray the crop with Furadon 3G @ 20 kg per hectare.

Delhi

Weather remained dry.

Mainly dry weather is likely over the State.

Advisories

- As there was no significant rainfall during last few weeks and mainly dry weather is likely over the State for next three days, apply irrigation to **early sown vegetable crops**, **wheat**, **barley**, **gram** and also to **mustard** and **toria** to bring the soil moisture to its field capacity.
- Prepare land and continue transplanting of 4 – 6 weeks old varieties of **cauliflower**, **cabbage** and **knolkhol** plants.
- Prepare land and perform sowing of Japanese White, Reshmi and Pusa Himani varieties of **raddish**, Pusa kanchan, Golden Ball and Pusa Chandrama varieties of **turnip** and Bonabilla variety of **peas** and nursery sowing of N53 and Pusa Red varieties of **onion**. Treat the seeds with Captan or Thairam or Dithane M- 45 @ 2 g / kg seeds.
- Prepare land and continue sowing of **wheat** and **gram**.
- Select varieties from HD-2285, Raj-3077 or 3765, UP 2338 and PBW-226 or 373 etc. for late sown **wheat** and Pusa 362, Pusa 372 and Pusa 1003 (*Kabuli*) etc. for **gram** for sowing.

Southern Region (AP, Tamilnadu, Karnataka and Kerala)

Kerala

Rain / thundershowers occurred at isolated places during the period.

Rain/thunder showers are likely at isolated places over the State.

Advisories

- Rain/thundershowers are likely to occur at isolated places for the next three days. Under the circumstance, apply irrigation to the **plantation crops** and **mundakan rice**.
- Attack of **leaf folder**, **brown plant hopper**, **stem borer**, **gall midge**, **sheath blight** and **bacterial leaf blight** is reported in **mundakkan** rice. Spray 0.05% Monocrotophos or Quinalphos to control insect pests and 2% *Pseudomonas flourescns* culture @ 1 kg / ha to control the disease.

- Attack of root grub and mahali disease is reported in **arecanut**. Apply Phorate @ 10 g / tree to control root grub. Spray 1% Bordeaux mixture on fruit bunches and crown to control mahali disease.
- Attack of **pollu beetle** and **quick wilt** is reported in **pepper**. Avoid spraying as the crop is now at harvesting stage.

Tamilnadu

Rain / thunder showers are likely at isolated places over the State.

Advisories

- There was no significant rainfall occurred during last week in the state except in **Coimbatore**, **Kanyakumari**, **Thirunelveli** and **Tuticorin**. Under the circumstances, apply irrigation to the standing crops to bring the soil moisture to its field capacity. Apply irrigation depending on the soil profile stored moisture in the above mentioned districts.
- Cloudy weather conditions are favourable for the outbreak of pests and diseases, particularly BPH and blast. Monitor the crop and undertake plant protection measures.
- Continue transplanting of **samba rice**.
- Continue land preparation and sowing of **cotton**, **pulses** and **groundnut** and **sunflower**.

Karnataka

Over coastal Karnataka, rainfall occurred at isolated places on 23rd, 24th & 25th, 28th and 29th and dry weather prevailed on 26th and 27th November. Over North Interior Karnataka, rainfall occurred at a few places on 25th and at isolated places on 28th and dry weather prevailed on the remaining days. Over South Interior Karnataka, rainfall occurred at isolated places on all days except 26th when the weather was mainly dry.

Mainly dry weather is likely over Karnataka.

Advisories

- There was no significant rainfall in all the districts except in **Belgaum**, **Chichmagalur** and **Kodagu**. Under the conditions, apply irrigation to early sown **rabi crops** like **jowar**, **wheat** and **maize**. Apply irrigation depending upon soil profile stored moisture in the above mentioned districts.
- Harvest the matured **kharif** crops like **rice**, **groundnut**, **cotton** and **sugarcane** on bright sunny days.
- Attack of army worm has been reported in **sugarcane** in Bidar and Bagalkote districts in north interior Karnataka subdivision. Avoid spraying as the crop is now at harvesting stage.

Andhra Pradesh

Dry weather prevailed over the state during period.

Mainly dry weather is likely to prevail over the state.

Advisories

- Conserve moisture in the field wherever the crops are at maturity stage.
- Incidences of pod borer have been reported in **red gram**. Spray Dichlorvas @ 2.5 ml/litre of water.
- Continue harvesting of matured **rice**, **tur**, **cotton** and **maize** on bright sunny days.

Eastern Region (Assam, Bihar, Sikkim, West Bengal)

Assam

Weather was dry over the State during the period.

Mainly dry weather is likely over the State.

Advisories

- As Dibrugarh, Lakhimpur, Sibsagar and Tinsukia districts received excess rain during last week, postpone irrigation in these districts.
- As there was no significant rain during last week in remaining districts of the State and mainly dry weather is likely over the State for the next three days, apply irrigation to black gram, green gram, rapeseed and mustard and early sown potato, wheat, pea and lentil.
- Drain out standing water 10-15 days before harvesting of *Sali rice*.
- Mild incidence of Pod and apion borer in arhar, aphids, jassids, flea beetle and leaf spot in black gram and green gram, aphids and saw fly in mustard and late blight in tomato is reported.
- Monitor Pod and apion borer in arhar and if crosses economic threshold level, spray Malathion 50 EC @ 1.5 ml per litre of water or Fenitrothion 50 E.C. @ 2ml per litre of water.
- Monitor Aphids, Jassids, Flea beetles in black gram and green gram and if crosses economic threshold level, spray Malathion 50 EC @ 2ml per litre of water. For leaf spot, as soon as diseases appear, spray Blitox or Fitolan @ 1.5 gram per litre of water at an interval of 7 to 10 days. Alternatively Bavistin @ 1 gram per litre of water should be applied at an interval of 12 to 15 days.
- Monitor aphids and saw fly in mustard and if crosses economic threshold level, spray Rogor or malathion @ 2ml per litre of water.
- Monitor late blight of tomato and if crosses economic threshold level, spray Indofil M-45, alternatively Indofil Z-78 @ 25 gm in 10 litres of water.
- Continue land preparation and sowing of winter vegetables, potato, wheat, pea and lentil and preparation of rice nursery.

West Bengal

During the said period weather was mainly dry throughout the State.

Weather will be mainly dry over the state.

Advisories

- As there was no significant rainfall in most of the districts of the State during last week and mainly dry weather is likely over the State for next three days, apply irrigation to sugarcane, rapeseed and mustard and also to early sown gram, wheat and potato wherever crops are at vegetative stage.
- Continue harvesting of matured *aman rice* on bright sunny days.
- Land should be prepared and sowing of *boro rice*, wheat and planting of potato may be done.
- Select varieties from CR-126-42-1, Khitish, IE-2233, PNR 381, IR-36, Lalat, Annada, Aditya, Tulsi etc. for short duration and Shasyasri, Prakash, Kunti, Ajaya, Pratap, Suraksha etc. for medium duration *boro rice* and Sonalika, UP 262, HP 1209, 1633, K 8804, PW 11 etc. for wheat.

Bihar

Weather remained dry.

Mainly dry weather is likely over the State.

Advisories

- There was no rainfall during last week and mainly dry weather is likely over the State for next three days. Under the circumstances, apply required irrigation to bring the soil moisture to field capacity in vegetables, maize, pulses, oilseeds and wheat.

- Continue transplanting of cauliflower, chillies, brinjal from ready seedling and sowing of winter vegetables.
- Continue field preparation and sowing of wheat and potato with available residual moisture.
- Weeding/thinning and top dressing operation may be continued in rabi maize, pulses/oilseed and earlier sown vegetable crops.

Jharkhand

Weather remained mainly dry.

Mainly dry weather is likely over the State.

Advisories

- There was no rainfall during last week and mainly dry weather is likely over the State for next three days. Under the circumstances, apply required irrigation to bring the soil moisture to field capacity in vegetables.
- Harvest the matured rice crop.
- Continue field preparation, sowing/transplanting of onion, tomato, cabbage, cauliflower, brinjal, chilli, potato, garlic and pea.
- Sowing of rabi pulses, oilseeds, maize, potato and wheat may be continued.

Sikkim

Very light rain occurred at a few places on 28th and 29th over East Sikkim. No rain occurred on 27th November over East Sikkim. Rainfall was scanty during the period.

Mainly dry weather is likely over the State

Advisories

- As there was excess rainfall during last week, postpone irrigation to vegetables.
- Continue harvesting of orange and rice.
- Continue sowing of wheat.
- Undertake intercultural operations in rabi vegetables and mustard to keep the field weed free.

Arunachal Pradesh

Mainly dry weather is likely over the State.

Advisories

- There was excess rainfall during last week and mainly dry weather is likely over the State for the next three days. Under these conditions, apply irrigation depending on the soil profile stored moisture to ginger, early sown potato and winter vegetables.
- Sowing of potato, wheat and mustard may be completed.
- First top dressing in early sown potato (33Kg Urea / ha) followed by earthing up and spray with 1.25 Kg Dithane M-45 in 500 lit water may be continued.

Central Region (Gujarat, Chhattisgarh, Maharashtra, MP & Orissa)

Gujarat

Weather remained mainly dry during last week.

Rain / thundershowers likely over south Gujarat and weather will be mainly dry over the remaining part of the State.

Advisories

- As there was no significant rain in the State during last few weeks and rain / thundershowers likely over south Gujarat and weather will be mainly dry over the remaining part of the State for next three days, apply irrigation to sugarcane, pre-monsoon irrigated cotton, Kharif cotton, castor and mustard to bring the soil moisture to field capacity.
- For monitoring & management of boll worm & heliothis of cotton hang 5 pheromance traps in one ha. Change the lures at an interval of 15 days. Destroy trapped moths every day. If boll worm population crosses economic threshold level, release parasite tricogamma @ 1.5 lakhs / ha 5 to 6 times as per requirement depending upon infestation found in field.
- If white fly population crosses economic threshold level in cotton, spray Neem oil @ 4 liter / ha.
- Prepare land and continue sowing of wheat crop. Select varieties from Lok-1, GW-496 (125-130 kg seeds / ha), GW-190 (100 kg seeds / ha), GW-503,273, 322 (125 kg seeds / ha), Raj-1555 (duram) (150 kg seeds / ha) for normal sowing and Lok-1, Gw-173 (150 kg seeds / ha) for late sowing of irrigated wheat and GW-1, A-206 (50 – 60 kg seeds / ha) for sowing of non-irrigated wheat. Apply basal fertilizer dose 60 kg Nitrogen, 60 kg phosphorus / ha for irrigated wheat and 20 kg Nitrogen for unirrigated wheat in furrow at the time of sowing.

Chhattisgarh

Weather remained dry during the period.

Mainly dry weather is likely over the State.

Advisories

- As there was excess rainfall in Raigarh district during last week, postpone irrigation to the crops in this district.
- As there was no significant rainfall in remaining districts during last week and mainly dry weather is likely over the State for next three days, apply irrigation to sugarcane and vegetables and also to early sown gram, linseed, safflower, mustard, toria wherever crops are at vegetative stage.
- Continue harvesting of matured rice crops on bright sunny days.
- Continue preparation of land and sowing of gram, linseed, safflower, mustard and toria, nursery sowing of onion and planting of potato.
- Seeds of gram may be treated with 2 to 2.5 gm Thiram / Captan / kg seeds & 250 gm Rhizobium + PSB / 10 kg seeds before sowing. Select varieties from Vaibhav, Vijay, J.G.- 74, I.P.C. - 2 etc. for gram.

Maharashtra

Rain has occurred at isolated places in East Vidarbha on 27th, in South Konkan on 28th & in South Madhya Maharashtra, Marathwada on 29th November. Mainly dry weather prevailed over rest of the State.

Rain / thundershowers are likely at isolated places over Konkan & Goa, Madhya Maharashtra. Mainly dry weather is likely over Marathawada and Vidarbha.

Advisories

- As there was no significant rain during last week in most of the districts and rain / thundershowers are likely at isolated places over Konkan and Goa, Madhya Maharashtra and mainly dry weather is likely over Marathawada and Vidarbha for next three days, apply irrigation to kharif cotton, tur and Cotton (irrigated) crops and also to early sown crops of rabi jowar, safflower, wheat, gram, rabi maize, sunflower, sugarcane (Pre-seasonal), potato and onion.
- Mild incidence of White Woolly Aphids in Aurangabad, Latur, Kohlapur and Pune and Pyrilla, White fly and Mealy bug in Nashik in sugarcane, Rice hispa & Midge fly in Nagpur division in Kharif rice, Aphids and Jassids in Aurangabad and Boll worm in Latur, Nashik and Amravati div. in irrigated cotton and Aphids and Jassids in Aurangabad and Vidarbha division in kharif cotton and leaf roller in Aurangabad, pod borer in Latur

division in tur and downy mildew in Grapes in Nasik, Pune, Solapur, Sangli and some other districts is reported.

- Monitor aphids and jassids population in cotton and if crosses economic threshold level, spray methyl dimeton 25EC @ 320 ml or dimethoate 30EC @ 500 ml / ha in 500 liter water.
- Monitor Boll worm in cotton and if exceeds economic threshold level, spray 36 % Monocrotophos WSC or 35 % Endosulphan WSC @ 850 ml / ha in 500 liter water.
- Monitor leaf roller population in tur and if crosses economic threshold level, spray 1000 ml endosulphon / ha in 500 liter water.
- Monitor pod borer population in tur and if crosses economic threshold level, spray 5% Neem extract or 20 to 25 ml Fenvalerate / ha in 100 liter water.
- For the control of downy mildew on Grapes, spray 0.2 to 0.4 % Bordeaux mixture @ 250 gm in 100 liter water at 10 days interval. For powdery mildew alternate spraying of Tridimefon @ 100 ml or water soluble Sulphur @ 200 gm in 100 liter may be done at 10 days interval.
- Continue field preparation and sowing of wheat and planting of sugarcane (Pre-seasonal) and onion.
- Select varieties like HI 977, HD 2501 and NIAW 34 for late sown wheat, CO-740, CO-7219, CO-86032, CO-M-88121 for sugarcane (Pre-seasonal) and N-2-4-1, Pusa red, Arka nicketan (for rabi plantating), Fule suvarna (for export) & Agri white-1, Fule safed, N-257-9-1 varieties (for powder) for onion.

Madhya Pradesh

Rain occurred at southeast MP on 27th and southwest MP on 29th November. Mainly dry weather prevailed over the State during rest period.

Mainly dry weather is likely over the State.

Advisories

- Undertake intercultural operations like weeding in early sown rabi crops like gram, mustard etc. to keep the field weed free.
- Apply light irrigation to the early sown crops, particularly for irrigated wheat.
- Continue harvesting of matured crop of tur.

Orissa

Rainfall occurred at isolated places over North Orissa and weather has been dry over South Orissa on 27th November. Weather has been dry over Orissa on 28th and 29th November.

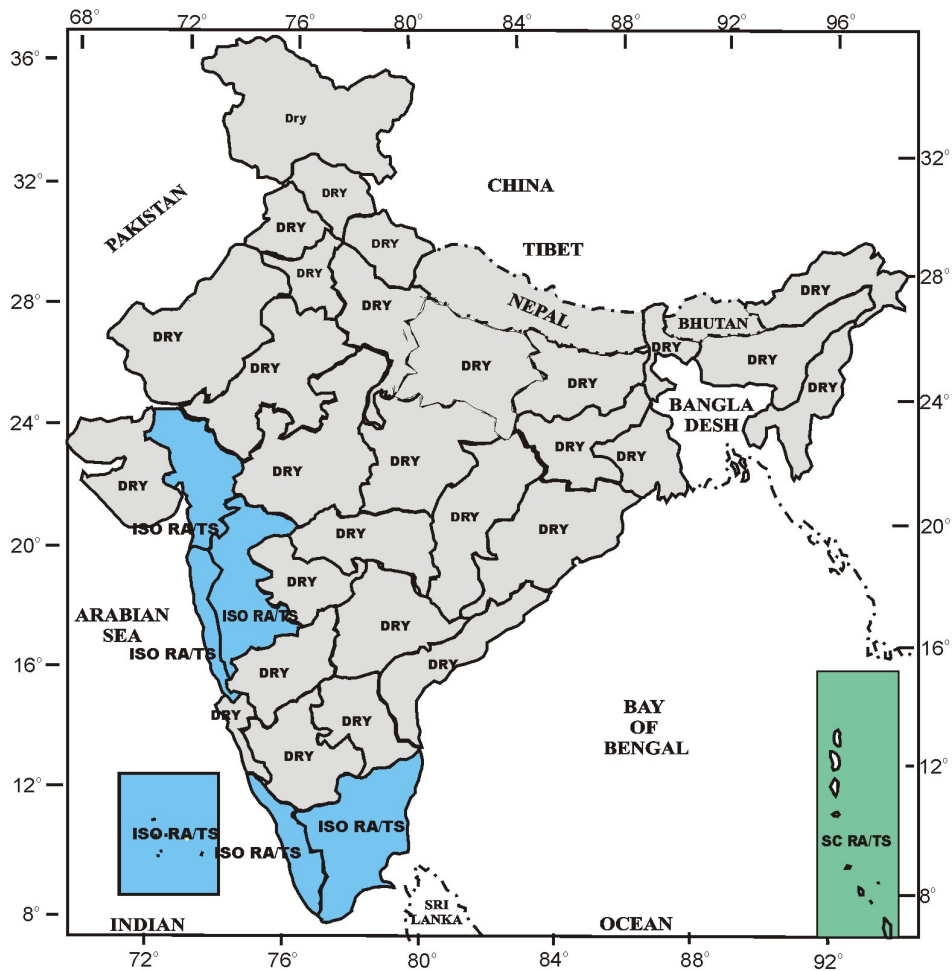
Mainly dry weather is likely over the State.

Advisories

- There was no rainfall during last week and mainly dry weather is likely over the State for next 3 days. Under the circumstances, apply required irrigation to the standing crops to bring the soil moisture to field capacity.
- Also continue inter cultural operation, application of fertilizer and plant protection measures to the crops.
- Field preparation and sowing of rabi groundnut, mung, kulthi, field pea and mustard may be continued.
- Harvest the matured rice crop.

Forecast Map

Valid upto 4th December



ISO - Isolated, TS - Thunder shower/storm, SN - Snow,
RA - Rain, DRY - No rain, SC - Scattered, MOD-Moderate,
SQ - Squall, HA- Hail. DS - Dust Storm, FW - Fairly Widespread
* - With heavy Rain warning

Salient weather features for the week ending 29/11/06

METEOROLOGICAL ANALYSIS

- Last week's western disturbance over Jammu & Kashmir and neighbourhood persisted on 23rd and moved away eastwards on 24th. Another feeble western disturbance moved across western Himalayan region on 26th and 27th.
- An upper air cyclonic circulation in the lower troposphere levels was seen over northeastern states during the first half of the week.
- An upper air cyclonic circulation extending upto 2.1 km a.s.l. was seen over north Madhya Maharashtra & neighbourhood during the later half of the week.
- A low pressure area formed over southeast and adjoining southwest Arabian sea on 23rd. It persisted on 24th and weakened thereafter.
- Trough of low pressure one over southwest Bay of Bengal and another over East Arabian sea were seen on many days of the week.

RAINFALL

Under the influence of the above systems:

- Light to moderate snowfall occurred at a few places over Jammu & Kashmir, Himachal Pradesh and Uttarakhand on 23rd. Light rain/thundershowers also occurred over the adjoining plains of Punjab, Haryana, Delhi and West Uttar Pradesh on 23rd.
- Scattered rainfall activity occurred over Arunachal Pradesh and Assam & Meghalaya during 23rd to 26th.
- Light to moderate rain/thundershowers occurred over Konkan & Goa, Madhya Maharashtra on many days of the week and over Marathwada and southwest Madhya Pradesh on one or two days of the week.
- Rain/thundershowers also occurred over many places over Tamil Nadu and Kerala on 23rd, 24th, 27th and 28th and at a few places/isolated places on remaining days of the week.
- Light rain/thundershowers also occurred over Coastal Karnataka, Lakshadweep and Andaman & Nicobar islands on some days of the week.
- Weather remained mainly dry over the rest of the country during the week.

TEMPERATURES

- Night temperatures were 4-6°C above normal over many parts of northwest India during first 2 days of the week. Subsequently, they fell over northwest India and Gangetic plains and were 2-4°C below normal during rest of the week. In fact, cold wave conditions also developed over some parts of East Uttar Pradesh and isolated pockets of Punjab and Haryana on 28th.
- They remained above normal over remaining parts of the country particularly over central India and adjoining Maharashtra where they were above normal by 4-6° C on many days of the week.

RAINFALL DURING THE WEEK ENDING ON 29TH NOVEMBER, 2006

Rainfall was excess/normal in 09 and deficient/scanty in 19 and no rain in 08 out of 36 meteorological sub-divisions (Actual: 4.5 mm, Normal: 5.4 mm and Departure: -16%).

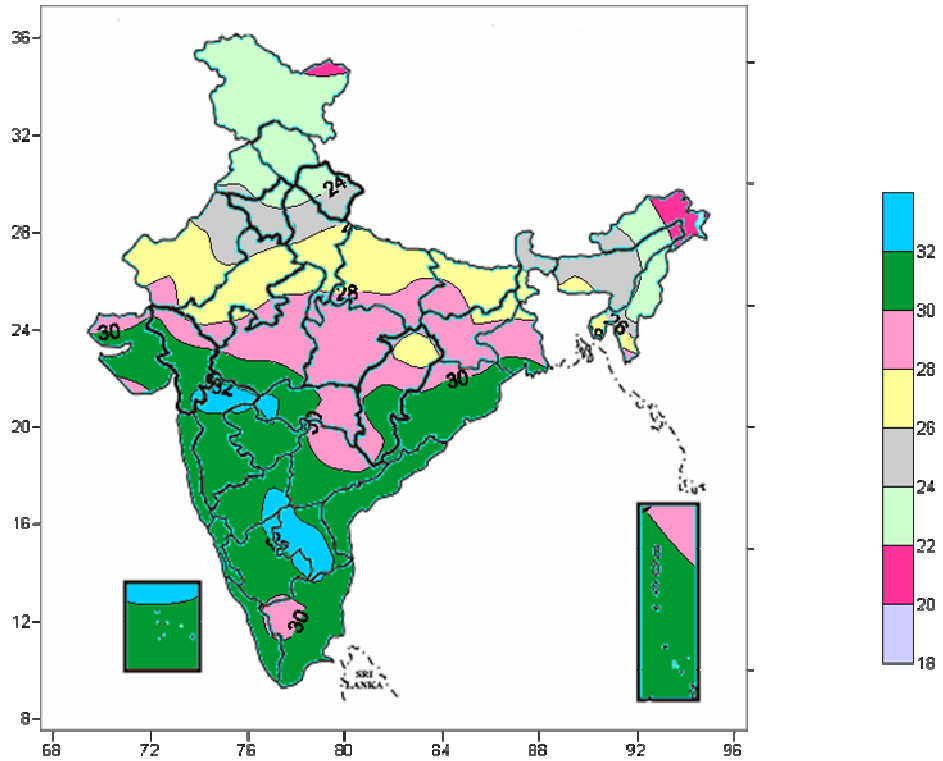
CUMULATIVE SEASONAL RAINFALL (1ST OCTOBER TO 29TH NOVEMBER, 2006)

Rainfall was excess/normal in 15 and deficient/scanty in 21 out of 36 meteorological sub-divisions. (Actual: 89.7 mm, Normal: 107.4 mm and Departure: -16%).

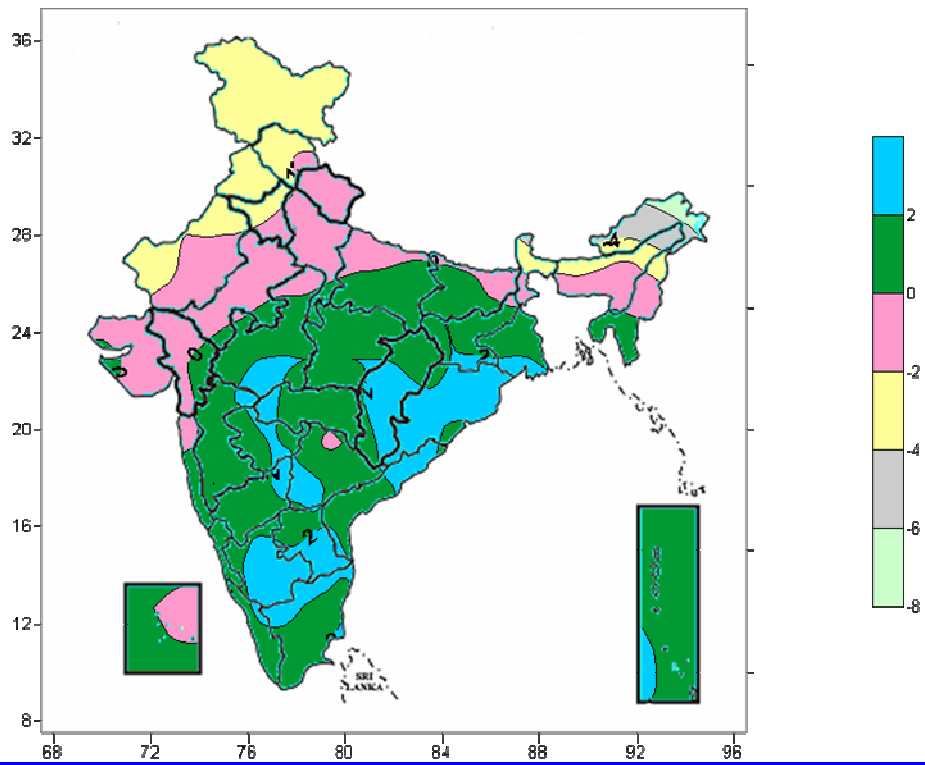
OUTLOOK FOR THE WEEK ENDING ON 6TH DECEMBER, 2006.

- In view of an approaching western disturbance, northwest India is likely to experience a wet spell during 3rd to 6th December. Isolated heavy snowfall is also likely over western Himalayan region during the above period. Night temperatures are likely to increase over northwest India.
- Subdued rainfall activity is likely to continue over extreme south peninsula.
- Isolated rain/thundershowers is also likely over Konkan & Goa, Madhya Maharashtra and Madhya Pradesh during first two days of the week.

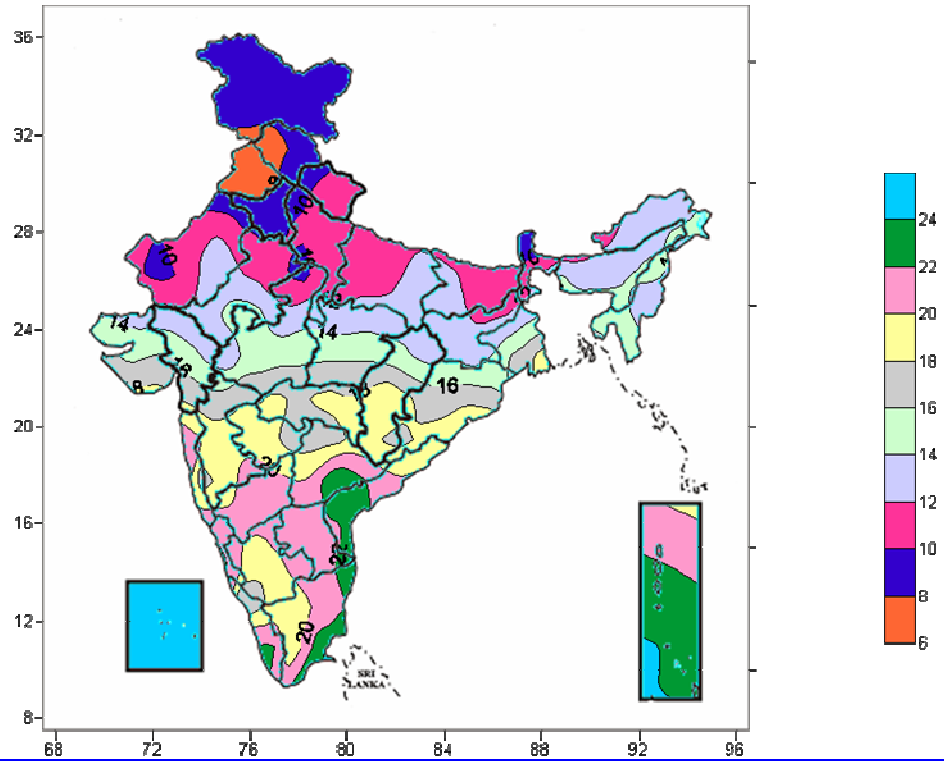
Actual mean maximum Temperature ($^{\circ}\text{C}$) In India for the week ending 29.11.06



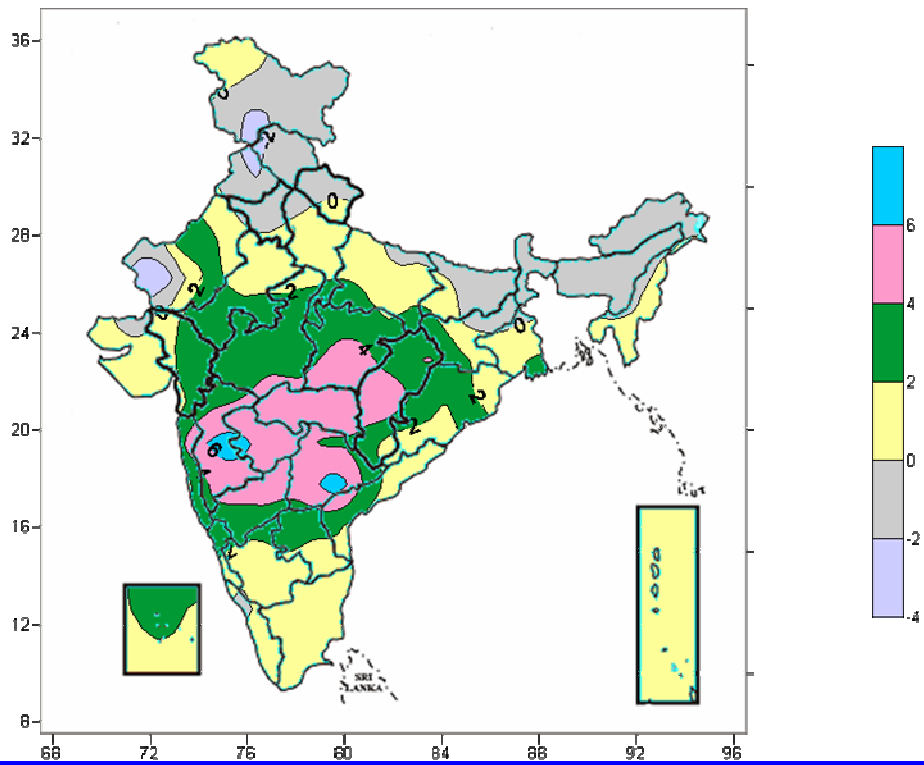
Maximum Temperature ($^{\circ}\text{C}$) Anomaly In India for the week ending 29.11.06



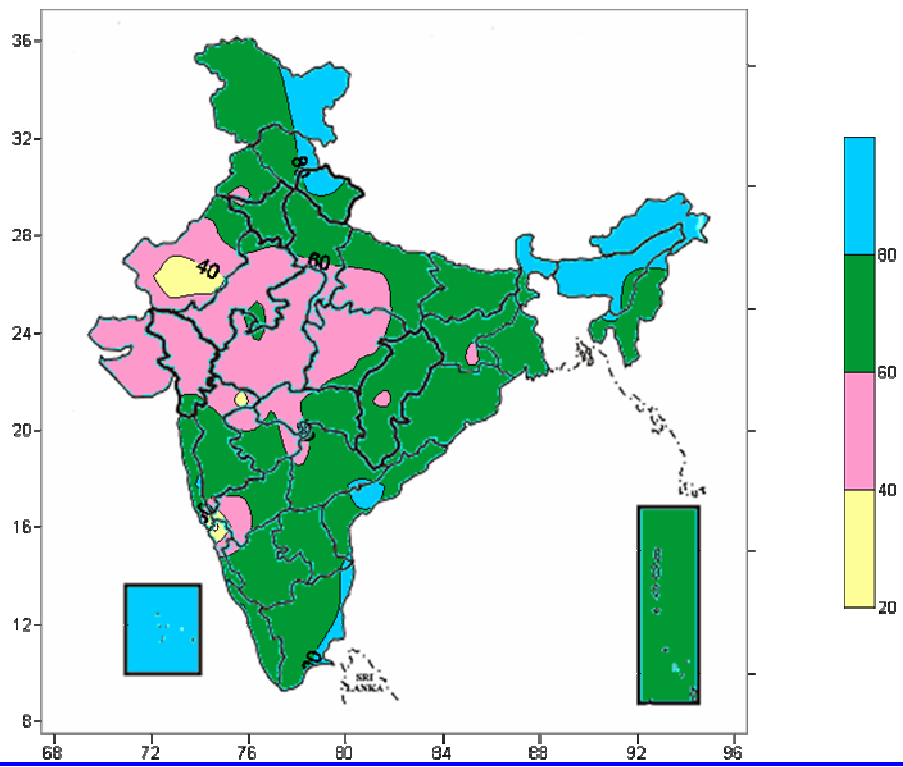
Actual mean Minimum Temperature ($^{\circ}\text{C}$) In India for the week ending 29.11.06



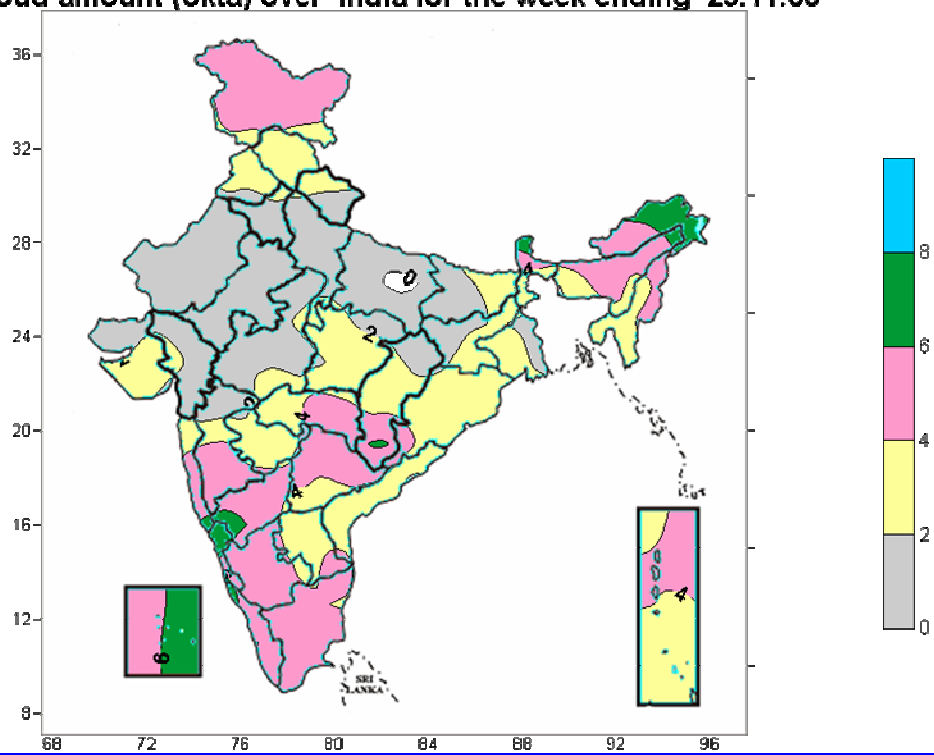
Minimum Temperature ($^{\circ}\text{C}$) Anomaly In India for the week ending 29.11.06



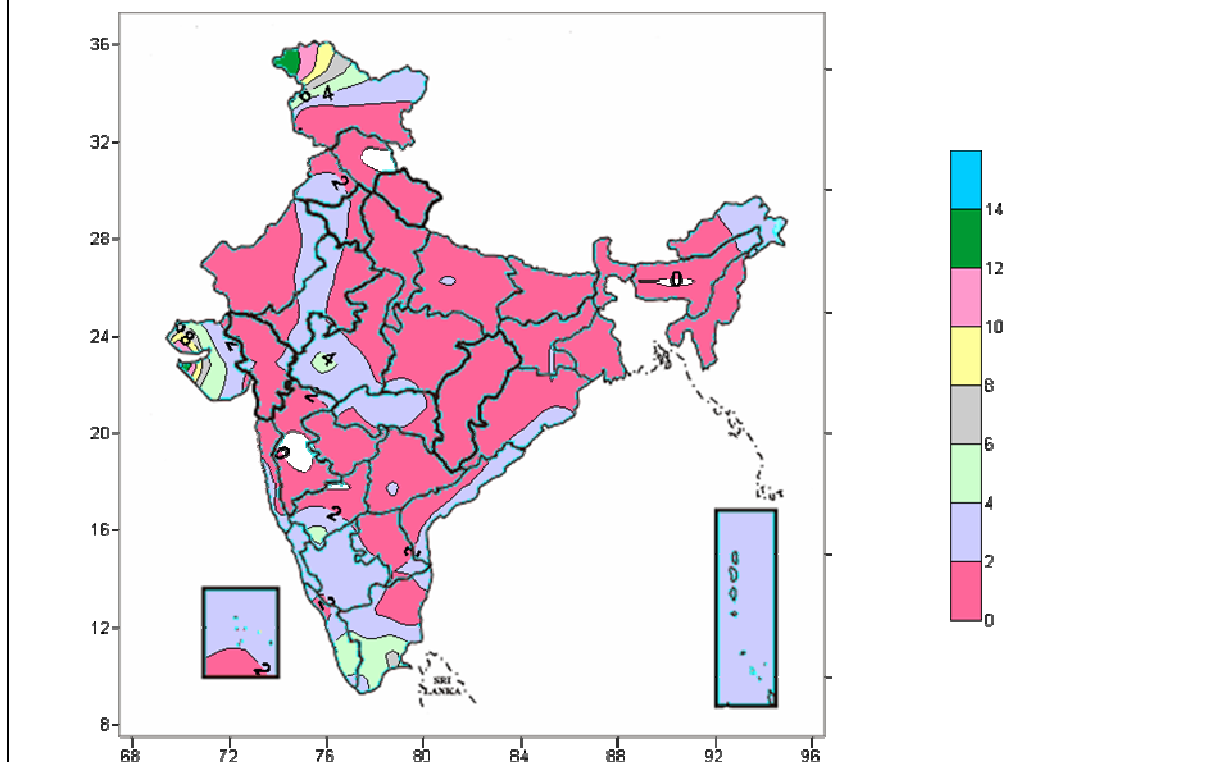
Relative humidity (%) over India for the week ending 29.11.06



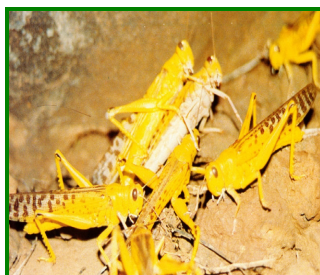
Cloud amount (okta) over India for the week ending 29.11.06



Wind speed (knots) over India for the week ending 29.11.06



Desert Locust Forecasting



Rainfall (mm)							
Station Name	23.11.06	24.11.06	25.11.06	26.11.06	27.11.06	28.11.06	29.11.06
Amritsar	NIL						
Barmer							
Sriganganagar							
Jaisalmer							
Kota							
Deesa							
Churu							

Temperature (degree celcius)							
Station Name	23.11.06	24.11.06	25.11.06	26.11.06	27.11.06	28.11.06	29.11.06
Amritsar	15.5	-	15	14	15	11.5	14
Barmer	21.5	19.5	18.5	16.5	16	17.5	18
Sriganganagar	18	17	16	15.5	16.5	15	16.5
Jaisalmer	21	20	20	19	19.5	20	20.5
Kota	26.5	23.5	21	19	19	19.5	21.5
Deesa	25	24	22.5	-	21	21.5	22
Churu	-	-	-	-	-	-	-

Wind

Station Name	23.11.06		24.11.06		25.11.06		26.11.06		27.11.06		28.11.06		29.11.06	
	Speed	Dir.	Speed	Dir.	Speed	Dir.	Speed	Dir.	Speed	Dir.	Speed	Dir.	Speed	Dir.
Amritsar	-	-	06	NW	-	-	-	-	06	NNW	04	E	-	-
Barmer	08	W	06	WNW	-	-	-	-	08	NW	03	N	03	N
Sriganga nagar	-	-	10	NNW	-	-	-	-	13	WNW	01	NNW	15	WNW
Jaisalmer	-	-	05	NW	-	-	-	-	09	WNW	03	W	09	W
Kota	-	-	06	W	-	-	-	-	09	WNW	04	WNW	06	S
Deesa	07	W	07	WNW	-	-	-	-	02	W	-	-	12	WNW
Churu	-	-	10	NNW	-	-	-	-	17	NW	02	ENE	06	WNW

There is no chance of locust infestation in Rajasthan and the adjoining areas during this week.

CROP – STATE – STAGE

Delhi

Toria	Vegetables (Brinjal, Chilly, Cauliflower and cabbage, raddish, carrot, and turnip)	Early sown vegetable crops	Wheat	Gram
Vegetative / flowering	Sowing/ Transplanting	Vegetative/ flowering/ fruiting/ harvesting	Sowing	Sowing
Barley	Mustard	Early sown Wheat	Early sown Gram	
Germination / early vegetative	Vegetative	Germination / crown root initiation	Germination / early vegetative	

Haryana

Horticultural crop	Sugarcane	Gram /Lentil	Rabi oilseeds	Wheat
Sowing/plantation	Vegetative	Sowing/early vegetative	Sowing	Sowing/early vegetative

Himachal Pradesh

Wheat	Gram	Summer vegetables (Cauliflower, Cabbage) /Arclpe peas	Vegetables (Tomato, brinjal, ladies finger)	Barley
Land preparation/sowing	Germination/early vegetative	Transplanting in high hills /Nursery sowing	Vegetative/flowering / fruiting / harvesting	Land preparation/sowing
Early sown Wheat	Vegetables (Methi, Palak)	Early sown Barley	Summer vegetables Radish, Turnip, Carrot	
Germination/Early vegetative/Crown root initiation	Sowing	Germination/ Early vegetative	Sowing	

Jammu & Kashmir

Winter vegetable crops	Rice	Mustard	Gram/ Field Pea	Wheat
Sowing/Transplanting	End harvesting	Vegetative/flowering	Early vegetative/vegetative	Sowing
Pea & brown sarson	Barley	Toria	Gobi Sarson	Lentil
Early vegetative	Sowing	Early vegetative	Sowing	Sowing

Punjab

Sugarcane	Rabi oilseeds	Gram/Lentil	Horticultural crop	Wheat
Vegetative	Germination	Sowing / early vegetative	Sowing/plantation	Sowing / early vegetative

Rajasthan

Cotton	Mustard	Wheat & cumin	Gram	Barley
End picking	Land preparation / sowing	Land preparation/sowing	Land preparation/sowing	Land preparation/sowing
Early sown Barley	Early sown Mustard			
Early vegetative/vegetative	Early vegetative/vegetative			

Uttar Pradesh				
Wheat/Barley	Rabi pulses	Sugarcane	Early sown Wheat/Barley	Winter Vegetables
Sowing	Early vegetative	Cane maturity / harvesting	seedling	Vegetative
Mango	Rabi Oilseeds(toria, rai and mustard)	Kharif Vegetables		
Active growth	Vegetative	Harvesting		

Uttaranchal				
Pea	Mango/Litchi	Wheat	Sugarcane	Toria
Flowering/pod formation	Active growth	Germination/crown root initiation	Grand growth/Maturity	Flowering/pod formation
Potato				
Tuber growth				

Assam				
Early sown Vegetables	Sugarcane	Wheat	Vegetables	Balck gram and Green gram
Vegetative	Cane maturity / harvesting	Land preparation/sowing	Land preparation / sowing	Pod formation/ maturity
Sali rice	Arhar	Rape seed and Mustard	Early sown Pea, Lentil and Potato	Pea, Lentil and Potato
Maturity/harvesting	Maturity	Vegetative	Early vegetative	Land preparation/sowing
Early sown Wheat	Boro Rice			
early vegetative / crown root initiation stage	Preparation of rice nursery			

Arunachal Pradesh				
Mustard	Ginger	Potato	Wheat	Winter vegetables
Land preparation / sowing	Vegetative	Land preparation / sowing	Land preparation / sowing	Vegetative
Early sown Potato				
Early vegetative				

Bihar				
Fruits and Vegetables	Winter vegetables	Wheat	Early sown Wheat	Rabi Maize
Vegetative	Sowing / transplanting	sowing	Germination to early vegetative	Early vegetative
Potato	Rabi Oil seeds (Toria, Sarson, Linseed)	Rabi Pulses (Lentil, Gram, Pea)	Early sown Pulses (Lentil, Gram, Pea)	
Field preparation / sowing	Early vegetative	Early vegetative	Early vegetative	

Jharkhand				
Rice	Rabi Maize	Wheat	Potato	
Maturity/harvesting	Field preparation, sowing	Field preparation, sowing	Field preparation /sowing	
Rabi vegetables (Tomato, Cabbage, Cauliflower, Brinjal, Chilli)	Early planted vegetables	Rabi pulses and oilseeds		
Transplanting, Onion-Sowing	Early vegetative / vegetative	Field preparation /sowing		

Sikkim				
Orange / Rice	Mustard	Rabi vegetables	Early sown Wheat	Wheat
Harvesting	Early vegetative/vegetative	Early vegetative/vegetative	Early vegetative/vegetative	Sowing

West Bengal				
Boro rice	Sugarcane	Wheat	Aman rice	Rape seed and Mustard
Field preparation / sowing	Cane development	Field preparation / sowing	Harvesting	Early vegetative / Vegetative
Gram/ Lentil	Early sowing Wheat	Potato	Early sowing Potato	
Germination / early vegetative	Germination / early vegetative / crown root initiation	Field preparation and planting	Sprouting / early vegetative	

Chhattisgarh				
Gram	Vegetables (Tomato, chilli, brinjal)	Sugarcane	Kharif rice	Linseed, Safflower, Mustard, Toria
Field preparation/sowing	Vegetative	Cane development	Harvesting	Field preparation/sowing

Early Sown Gram	Early Sown Linseed, Safflower, Mustard, Toria	Potato	Onion	
Early vegetative	Early vegetative	Field preparation/Planting	Field preparation and nursery sowing	
Gujarat				
Mustard	Wheat	Pre-monsoon irrigated Cotton	Castor	Sugarcane
Vegetative	Land preparation/sowing	Boll formation / picking	Flowering/ Pod formation	Cane development/early maturity
Kharif Cotton	Early Sown Wheat	Summer Rice		
Square / boll formation	Germination / early vegetative	Preparation of rice nursery		
Maharashtra				
Rabi Jowar (Madhya Maharashtra, Marathwada & Vidarbha)	Tur (Madhya Maharashtra, Marathwada & Vidarbha)	Irrigated Cotton	Sugarcane (Seasonal) (Madhya Maharashtra, Marathwada and Vidarbha)	Rabi Sunflower (Madhya Maharashtra, Marathwada & Vidarbha)
Early vegetative / vegetative	Pod formation/pod maturity	Boll formation /boll maturity/picking	cane maturity/harvesting	early vegetative/vegetative
Potato (Madhya Maharashtra, Marathwada & Vidarbha)	Kharif cotton (Madhya Maharashtra, Marathwada & Vidarbha)	Early sown Sugarcane Preseasonal and potato (Madhya Maharashtra, Marathwada & Vidarbha)	Kharif rice (Konkan)	Kharif rice (Madhya Maharashtra, Marathwada & Vidarbha)
Field preparation/planting	Boll formation/ boll maturity/picking	Sprouting/Early vegetative/early tuberization	(medium varieties) Harvesting (late varieties) Grain maturity/harvesting	Grain maturity/harvesting
Gram, Maize (Madhya Maharashtra, Marathwada & Vidarbha)	Wheat (Madhya Maharashtra, Marathwada & Vidarbha)	Onion & Sugarcane Preseasonal (Madhya Maharashtra, Marathwada & Vidarbha)	Early sown Gram (Madhya Maharashtra, Marathwada & Vidarbha)	Early sown Wheat (Madhya Maharashtra, Marathwada & Vidarbha)
Germination / early vegetative/branching	Field preparation / sowing/	Field preparation/planting	Germination	Germination/seedling/ crown root initiation/tillering
Madhya Pradesh				
Wheat & gram	Mustard	Kharif crops(Tur/)	Masoor	Linseed
Germination/seedling/early vegetative/vegetative	Germination/seedling/early vegetative/vegetative	Pod harvesting	Germination/seedling/early vegetative/vegetative	Germination / seedling / early vegetative / vegetative
Orissa				
Vegetables	Kharif Rice	Mustard	Pulses	Early sown pulses
vegetative	Maturity/harvesting	Seedling/early vegetative	Sowing (Biri / Mung / Kulthi)	Pod maturity
Sugarcane	Rabi Groundnut			
Grand growth	Seedling/early vegetative			
Andhra Pradesh				
Kharif rice	Kharif crops(Chillies/ Tur)	Groundnut	Cotton	
Grain harvesting	Tur-Pod harvesting,	Pod harvesting	Boll picking	
Karnataka				
Groundnut	Sugarcane (Ratoon crop & new crop)	Early sown Rabi jowar, wheat and maize	Kharif rice	Kharif cotton
End harvesting	Harvesting	seedling/early vegetative/vegetative	Grain harvesting	Picking

Kerala				
Rubber	Mundakan rice	Pepper		
Tapping	Grain formation	Harvesting		
Tamil Nadu				
Early sown Pulses (Black gram and green gram)	Millets	Cotton	Early & mid sugarcane	Early sown oilseeds
Vegetative	Sowing	Sowing	Maturity	Vegetative
Early sown Millets	Rice (<i>Samba</i>)	Pulses (Black gram and Green gram)	Oilseeds (Groundnut, Sunflower)	
Vegetative	Nursery/transplanting	Sowing	Sowing	