



KMD

# AGROMETEOROLOGICAL BULLETIN

## KENYA METEOROLOGICAL DEPARTMENT

4th Dekad, 1st to 10th February 2008

Issue No. 4/2008,      Season: JF

### HIGHLIGHTS

- *During the 4th Dekad i.e. 1st to 10th February 2008, Light to moderate rainfall was experienced over the Western, Central Rift Valley, the central Highlands Nairobi area and its environs with Kakamega ,Kisumu ,Kericho, Eldoret, Nyeri and Dagoretti recording a Dekadal total of 35.2, 54.9, 38.1, 50.8, 45.1, and 21.2 mm respectively. The rest of the country experienced hot and dry conditions..*
- *Mean daily temperatures were relatively high over most parts of the country with Mandera recording maximum day temperature of 38.1 deg Celsius on 2<sup>nd</sup> February 2008. Low night temperatures were recorded over some parts of Central Rift Valley with Nyahururu recording a minimum of 5.3 deg Celsius on 3<sup>rd</sup> February 2008.. (Fig.3)*
- *The pastoral regions and game parks of Northern and Southern Rift Valley, North Eastern and South Eastern lowlands, experienced light or no rains at all during the period. (Figs.1, 2 & 4).*

### CROP AND WEATHER REVIEW

(1<sup>st</sup> to 10<sup>th</sup> February 2008)

#### **Central Province and Nairobi area:**

Slightly wet conditions were experienced in the Central province, Nairobi area and its environs, but these could not reverse the current crops status.

Most crops are at the flowering stage and are malnourished due to the prolonged dry spells experienced during the season. Crops in several lowlands regions are drying up. However, in the highlands regions of Nyeri and Kirinyaga crops are stunted and poor yields are expected.

**Eastern Province:**

Hot and dry conditions were experienced during the Dekad. Crops are at flowering stage and are stunted due to water stress experienced during the season and poor yields are expected.

The south (Machakos, Mwingi and Kitui), dry and hot conditions dominated the region. The crops are at the maturity stage with poor yields expected.

**Coast Province:**

Dry and hot conditions were experienced over this region during the review period.

**North Eastern Province:**

Dry and hot conditions were experienced over this region resulting in poor pastures and inadequate water sources for both domestic and animal use. (Figs.1, 2, 3)

**Western Province:**

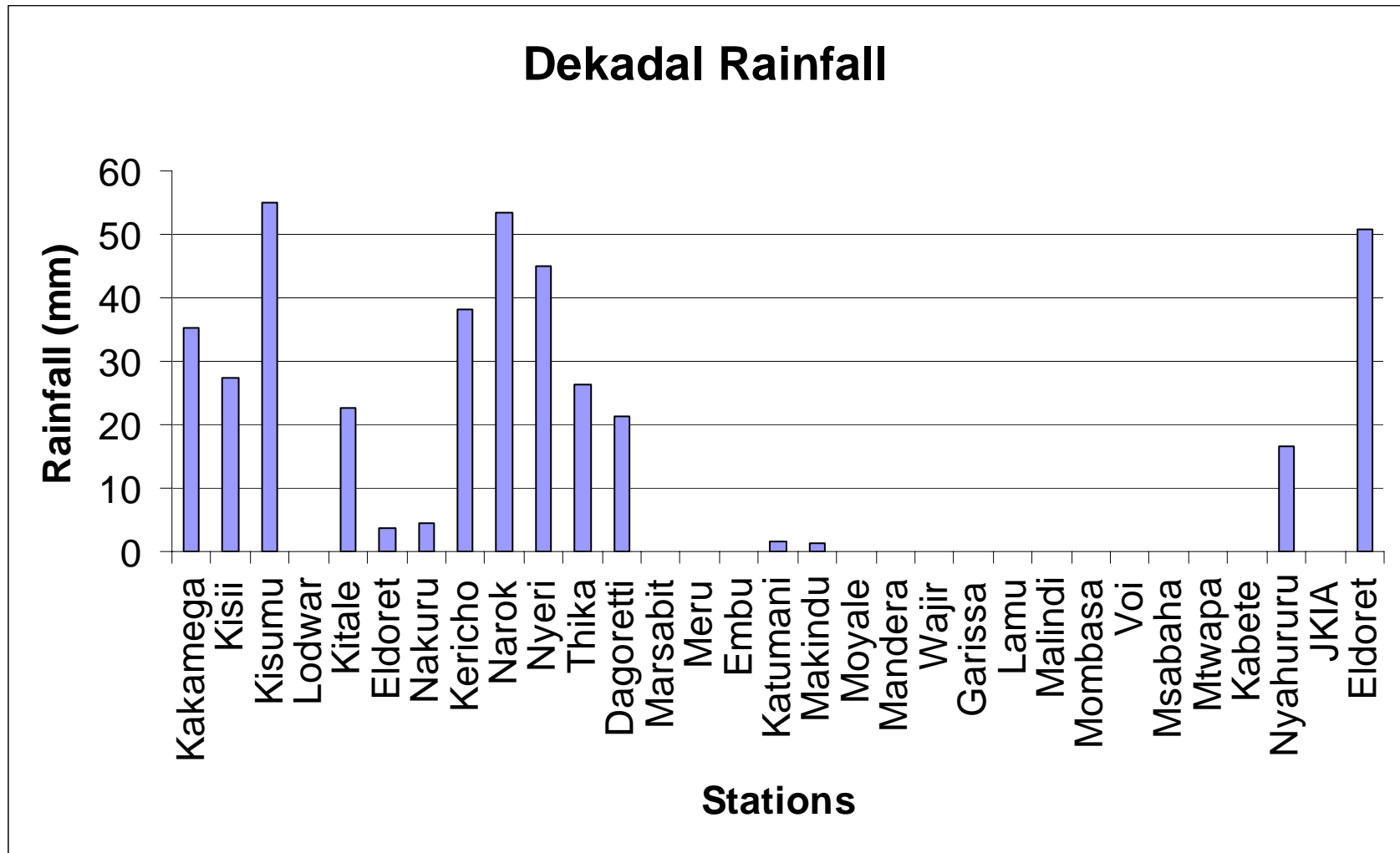
Light rainfall was received in some parts of this region (Kakamega, Bungoma and Busia). Land preparations is in progress in readiness for the long rain season. (Fig.1).

**Nyanza and Central Rift Valley:**

Light to moderate rainfall was received in some parts of this region. Crops are doing well and in Kisii maize crop is at the maturity stage and corresponding to normal growth with normal yields expected. (Figs 1)

**Northern and Southern Rift Valley:**

Dry and hot conditions prevailed in the region resulting in poor pasture regeneration and inadequate water sources for domestic, wildlife and animal use. (Figs.1, 2, 3)



**Fig. 1: Actual Rainfall (1st to 10th February 2008)**

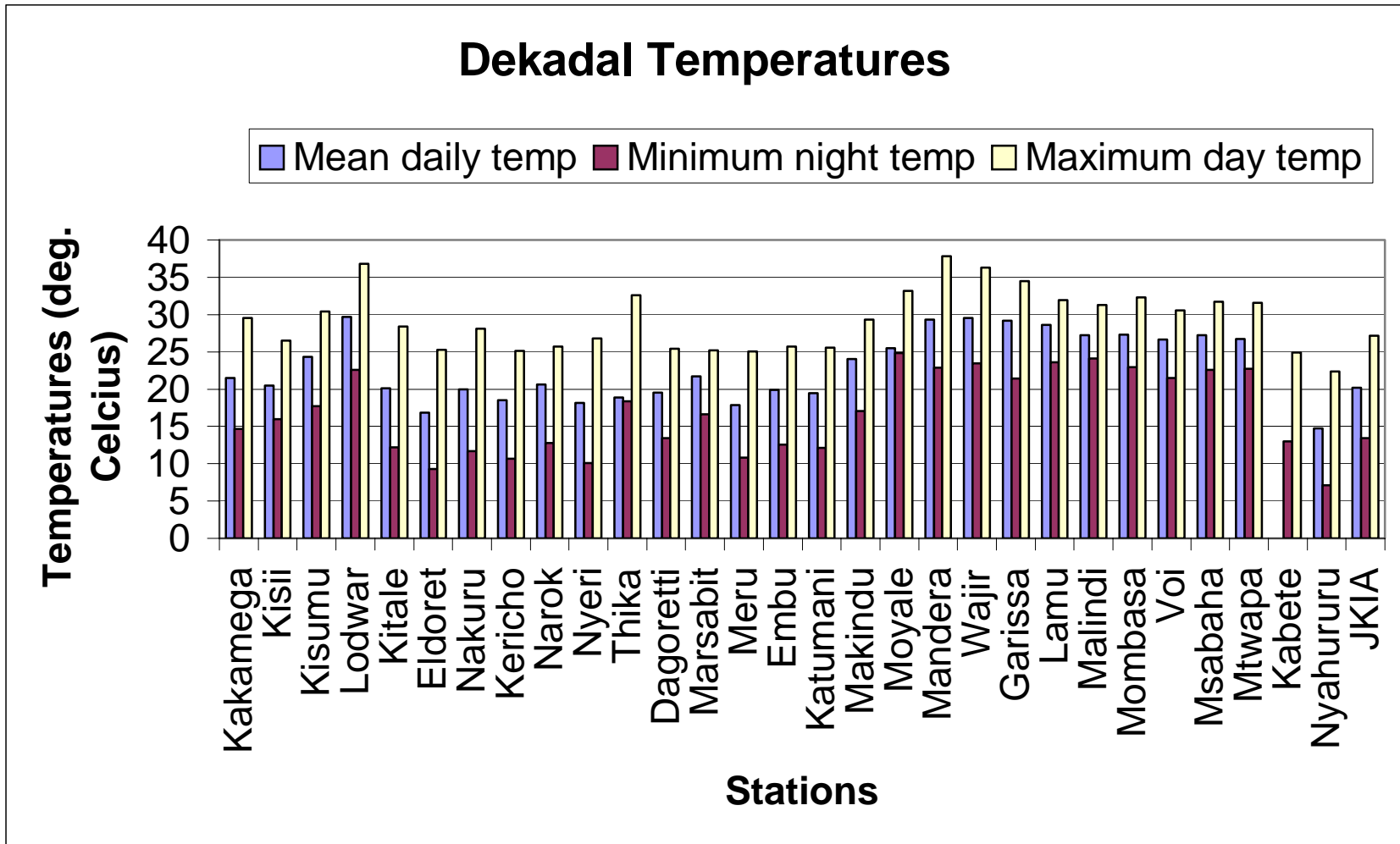
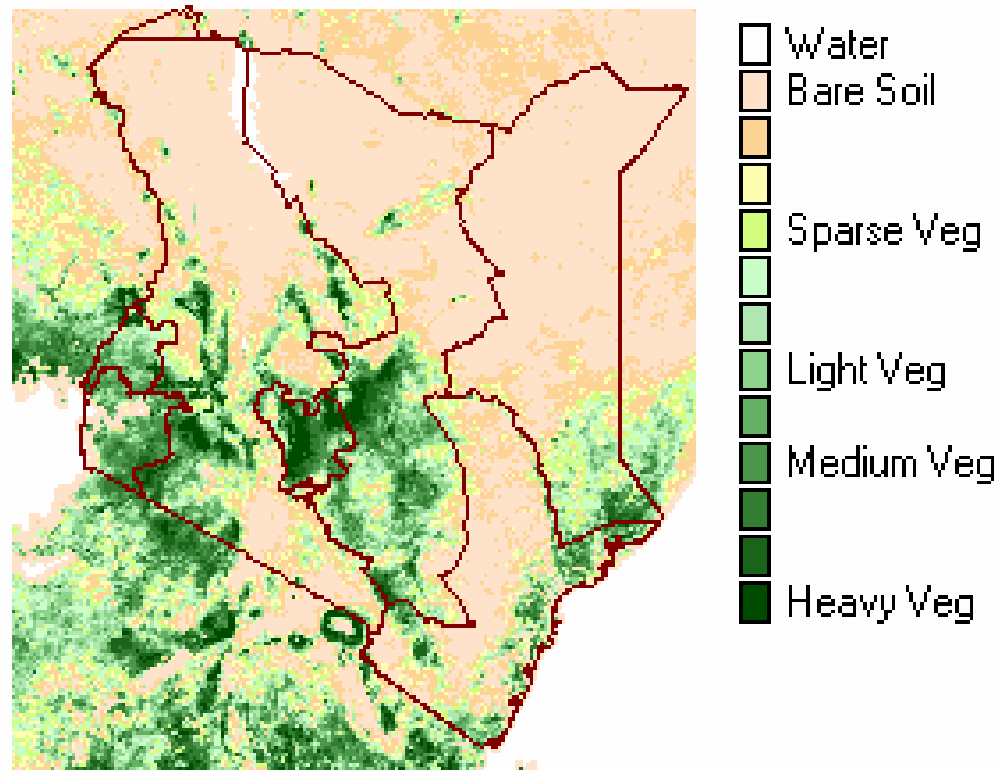


Fig 3: Mean Temperatures (1st to 10th February 2008)



**Fig. 4: Normalized Difference Vegetation Index (1st to 10th February 2008)**

**EXPECTED WEATHER AND CROP CONDITIONS DURING THE NEXT 10 DAYS (11th –20th February 2008).**

During the next 10 days Western, Nyanza and Central Rift Valley regions are expected to experience light rainfall over a few places. Crops are expected to continue doing well and correspond to normal growth.

Central Highlands, Nairobi area and its environs, are expected to receive light rainfall in few places, but this will not reverse the poor state of the crops.

In South Eastern lowlands, hot and dry conditions are expected to prevail. Crops are expected to continue experiencing water stress.

In the pastoral regions of North Eastern and North Western including Southern Rift Valley dry and hot conditions are expected to continue resulting in poor pastures and scarce water sources for domestic, wildlife and animal use posing a risk of human and animal conflict in search of water.

In summary crops are expected to experience water stress due to insufficient rainfall in most parts of the country and hence poor yields are expected in most parts of the country especially in Central highlands and South Eastern lowlands. The Government should be alert on food security for the most vulnerable livelihoods.

In the pastoral regions and game parks dry and hot conditions are expected to prevail resulting in inadequate pastures and water for both domestic and animal use.

***This product should be used in conjunction with the daily 24-hour forecast issued by the Department.***

***This product should be used in conjunction with KMD weather forecasts***

***Contact information***

***Kenya Meteorological Department***

***Agrometeorological Division***

***Dagoretti Corner, Ngong Road,***

***P.O. Box 30259, 00100 GPO, Nairobi***

***Tel: +254 (0)20 3867880-7/3876957/3873682***

***Fax: +254 (0)20 3876955***

***E-mail: [director@meteo.go.ke](mailto:director@meteo.go.ke)***

***Website: [www.meteo.go.ke](http://www.meteo.go.ke)***

©2008 The Kenya Meteorological Department