



KMD

# AGROMETEOROLOGICAL BULLETIN

## KENYA METEOROLOGICAL DEPARTMENT

9th Dekad, 21st to 31st March 2008

Issue No. 9/2008,      Season: MAM

### HIGHLIGHTS

- *During the 8th Dekad i.e. 21st to 31st March 2008 moderate to heavy rainfall was experienced over most parts of the country as the Long Rain Season spreads to almost all parts of the country, except for parts of North Eastern Province where sunny and dry conditions prevailed. Heavy rainfall was experienced over the Western, Central Rift Valley, Central Highlands and Nairobi Area, Southeastern Lowlands and the Coastal Strip with Kakamega, Kisii, Kericho, Narok, Dagoretti, Voi and Lamu recording a Dekadal rainfall total of 84.1, 160.8, 164.9, 144.1, 91.1, 109.1, and 97.1mm respectively.*
- *Mean daily temperatures continued to fall over most parts of the country due to the cloudy and rainy conditions. Night temperatures were relatively warmer especially over some parts of Central Rift Valley, with Nyahururu recording a Dekadal minimum mean of 6.7 deg Celsius. (Fig.2)*
- *The pastoral regions and game parks of Northern and Southern Rift Valley, North Eastern and South Eastern lowlands, experienced significantly light rains and these was a relief to pastures regeneration and water sources. Incidences of human animal conflict over food and water have been reported in some areas bordering Game Parks and Game reserves of Rift Valley, Eastern and North Eastern provinces (Figs.1 & 3).*
- *The long rains season has started over most, pars of the country and is expected to spread to the rest of the country by the first Dekad of April.*

## **CROP AND WEATHER REVIEW**

### **(21st to 31st March 2008)**

#### **Central Province and Nairobi area:**

Moderate rainfall was received over Central province, Nairobi area and its environs.

Land preparations and planting is on going in most parts in these regions with the start of the Long rain season.

#### **Eastern Province:**

Light to moderate rainfall was received over these region during the Dekad. Land preparations and planting are ongoing in with the start of the long rains.

To the south (Machakos, Mwingi and Kitui), moderate heavy rainfall were received in several areas and this was a relief for pastures regeneration and water sources. Land preparations and planting are ongoing in several areas.

#### **Coast Province:**

Moderate to heavy rainfall was received in several areas in the region during the review period. Land preparations and planting are ongoing.

#### **North Eastern Province:**

Hot and dry conditions continued to be experienced in some parts of Wajir and Mandera districts pausing a risk of inadequate pastures and water. However moderate rainfall was experienced in Garissa and Moyale districts. This was a relief to pasture regeneration and water sources for both domestic and animal use. (Figs.1, 2, 3)

#### **Western Province:**

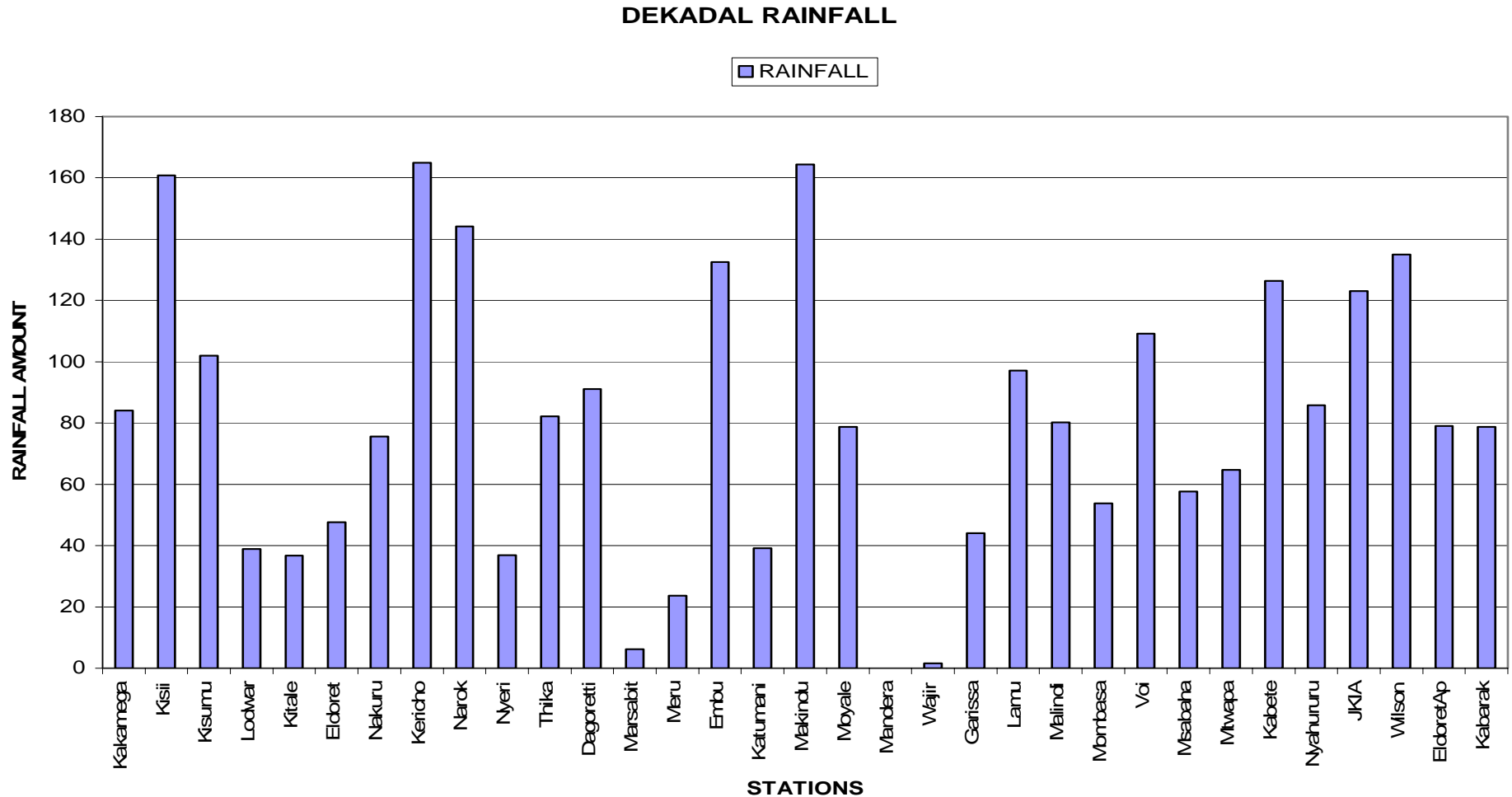
Heavy rainfall was received in several areas of this region (Kakamega, Bungoma and Busia). Land preparations/planting is in progress. (Fig.1).

#### **Nyanza and Central Rift Valley:**

Moderate to heavy rainfall was received in several areas of this region. Land preparations and planting are on going in several areas of this region. Around Kisii planting is over and the maize and beans are in the emergence stage. (Figs 1)

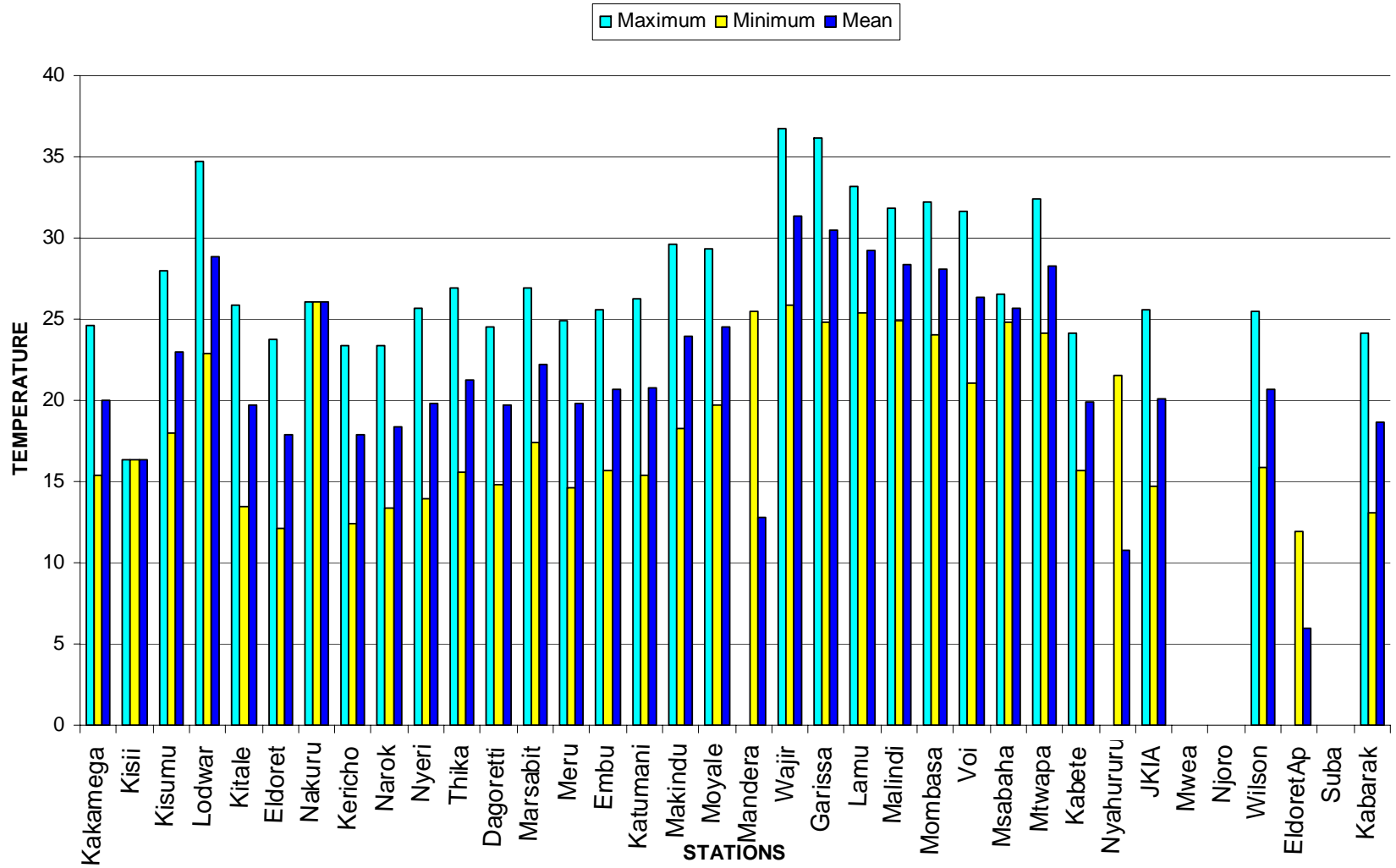
## Northern and Southern Rift Valley:

Moderate to heavy rainfall was received in the Southern Rift Valley regions resulting in improved pastures regeneration and water sources for both domestic and animal use. The Northern Rift Valley received light rainfall which was a relief to pasture and water sources. (Figs.1, 2, 3)

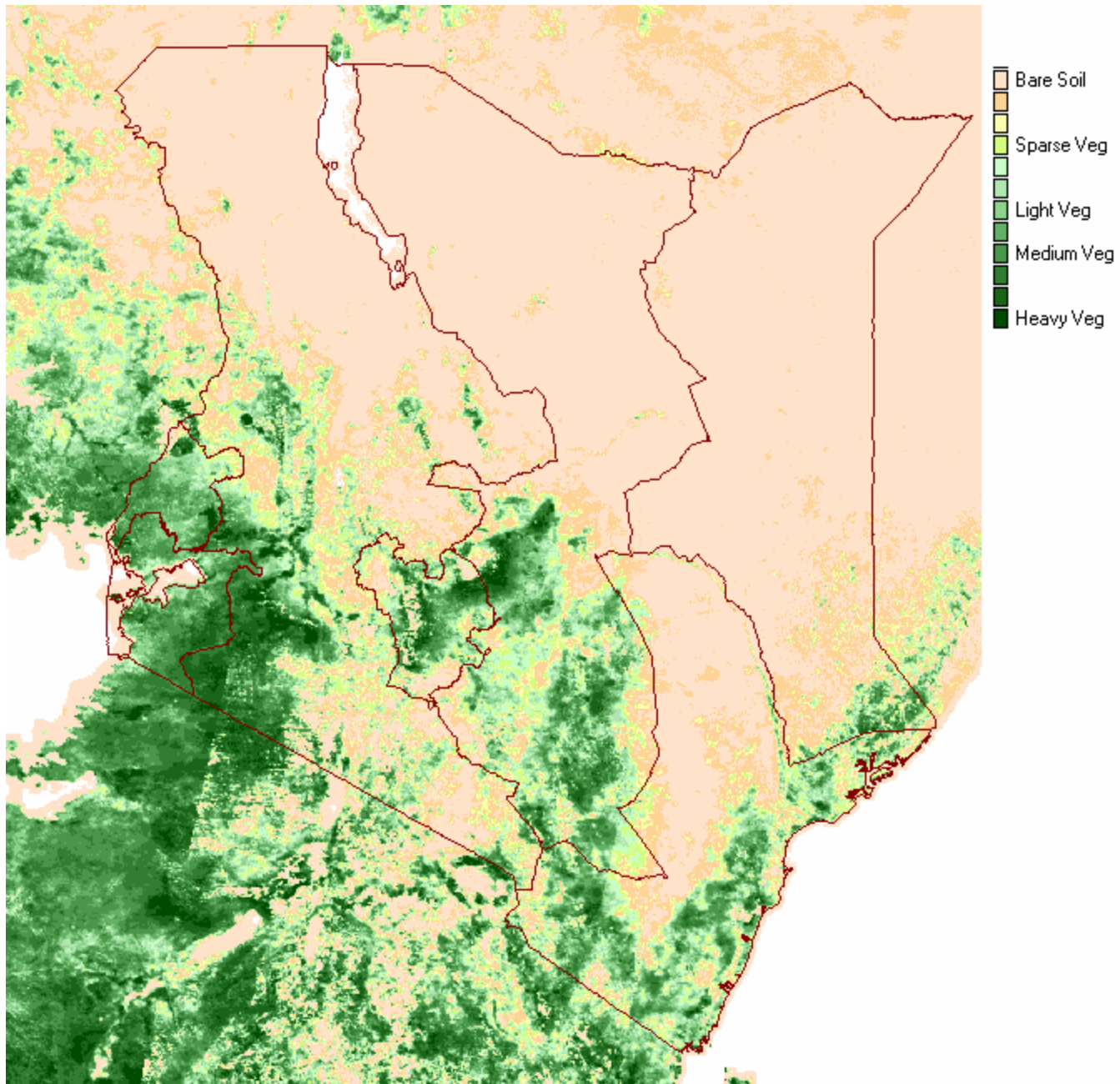


**Fig. 1: Actual Rainfall (21st to 31st March 2008)**

## DEKADAL TEMPERATURES



**Fig 2: Mean Temperatures (21st to 31st March 2008)**



**Fig. 3: Normalized Difference Vegetation Index (21st to 31st March 2008)**

## **EXPECTED WEATHER AND CROP CONDITIONS DURING THE NEXT 10 DAYS (1st –10th April 2008).**

During the next 10 days Western, Nyanza and Central Rift Valley regions are expected to experience moderately to heavy rainfall over several places. Land preparations and planting are expected to continue since the long season has started

Central Highlands, Nairobi area and its environs, are expected to receive moderate rainfall in several places. Land preparations and planning are expected to continue in several places in readiness for the long rains.

In South Eastern lowlands, moderate rainfall is expected we approach the rain season. Land preparations and planting are expected to commence in several places since the long season has started.

In the pastoral regions of North Eastern and North Western including Southern Rift Valley light to moderate rainfall is expected over several places, resulting in improved pastures regeneration and improved water sources for domestic, wildlife and animal use.

In summary land preparations and planting are expected to continue over most regions of the country as we enter the long rains season.

In the pastoral regions and game parks improved pasture regeneration and water sources are expected.

***This product should be used in conjunction with Kenya Meteorological Department weather forecasts***

***Contact information***

***Kenya Meteorological Department***

***Agrometeorological Division***

***Dagoretti Corner, Ngong Road,***

***P.O. Box 30259, 00100 GPO, Nairobi***

***Tel: +254 (0)20 3867880-7/3876957/3873682***

***Fax: +254 (0)20 3876955***

***E-mail: [director@meteo.go.ke](mailto:director@meteo.go.ke)***

***Website: [www.meteo.go.ke](http://www.meteo.go.ke)***

©2008 The Kenya Meteorological Department