



KMD

AGROMETEOROLOGICAL BULLETIN

KENYA METEOROLOGICAL DEPARTMENT

17th Dekad, 11th to 20th June 2008

Issue No. 17/2008, Season: MJJ

HIGHLIGHTS

- *During the 17th Dekad i.e. 11th to 20th June 2008 light to moderate rainfall was experienced over the Western and parts Central Rift Valley and North Eastern provinces while the Coastal Region experienced heavy rainfall. with Kakamega, Kisii, Kisumu, Kericho, Eldoret, Nakuru, Msabaha, Malindi, Lamu, Mombasa, Mtwapa, 61.5, 49.3, 95.0, 58.2, 84.4, 24.4, 12.0, 8.5, 6.5, 3.8, 9.9 respectively. The rest of country remains generally dry with cool and cloudy conditions being experienced in Central districts and Nairobi area.*
- *Maximum (daytime) temperatures remained relatively low over most parts of the country due to overcast skies condition. Night temperatures were relatively cold especially over some parts of central highlands, Nairobi area and parts of Central Rift Valley, with Nyahururu recording a minimum temperature of 5.1 deg. Celsius on 14th June 2008 with a Dekadal mean of 9.3 deg Celsius. (Fig.2)*
- *The pastoral regions and game parks of Northern Rift Valley Southern Rift Valley, North Eastern and South Eastern lowlands, experienced light rainfall which was a sigh of relief to pastures and water source but incidences of human and animal conflict continued being reported. (Figs.1 & 3).*

CROP AND WEATHER REVIEW

(11th to 20th June 2008)

Central Province and Nairobi area:

Cool and cloudy conditions with light rains/drizzle were experienced over most parts of Central province, Nairobi area and its environs. Maize crop is at the flowering stage in most places while bean crop is at the harvesting stage with poor yields being reported. The maize crops in these regions are experiencing severe water stress especially in the lowland areas of Kirinyaga, Muranga, Maragua and Thika Districts due to insufficient rainfall, which is highly required at this stage of grain formation.

Eastern Province:

Cloudy conditions with light rains were experienced in parts Embu and Meru Districts bordering Mt. Kenya. Maize crop is at the flowering stage in most places while beans are at the harvesting stage with poor yields being reported. Crops in some parts of these regions are experiencing water stress especially in the lowland areas of Mbeere District due to insufficient rainfall resulting in poor grain formation and subsequent reduction in yields.

To the south (Machakos, Mwingi and Kitui), hot and dry conditions dominated this region during the period under review. The adverse effect reported was too much sun and lack of rainfall resulting in crop failure in several places. The government machineries should be put on alert on food insecurity and the vulnerable livelihood.

Coast Province:

Heavy rainfall was received in this region during the review period. Weeding is complete in most areas of Mtwapa, Mshabaha and Lamu, which has been hampered by excessive weeds growth rate due to the heavy rainfall. Maize crop is at the flowering stage and is corresponding to normal growth with yields above normal expected. Grass for livestock is also doing well and the animals are healthy.

North Eastern Province:

Light rainfall was experienced in most parts of the province, resulting in a sigh of relief to pastures and water sources for both domestic and animal use. The pastoralists may still be expected to start migration earlier than usual in search of pastures and water. (Figs.1, 2, 3)

Western Province:

Light to moderate rainfall was received in several places in this region (Kakamega, Bungoma and Busia). Crops are doing well and are corresponding to normal growth. Maize crop is at the flowering stage and the bean crop is at the maturity stage with normal yields being expected. (Fig.1).

Nyanza and Central Rift Valley:

Light rainfall was received in several places in this region. Crops are doing well and corresponding to normal growth. Areas around Kisii the maize crop is at the flowering stage and the bean crop is at the harvesting stage with normal yields being reported. In the same region land preparation for the next season crop has started. (Figs 1)

Northern and Southern Rift Valley:

Hot and dry conditions dominated in the Southern Rift and North Western regions resulting in inadequate pastures and water sources for both domestic and animal use. In the farming areas of Southern Rift Valley lack of adequate rainfall has resulted in seasonal crop failure. (Figs.1, 2, 3).

Rainfall Dekad 17

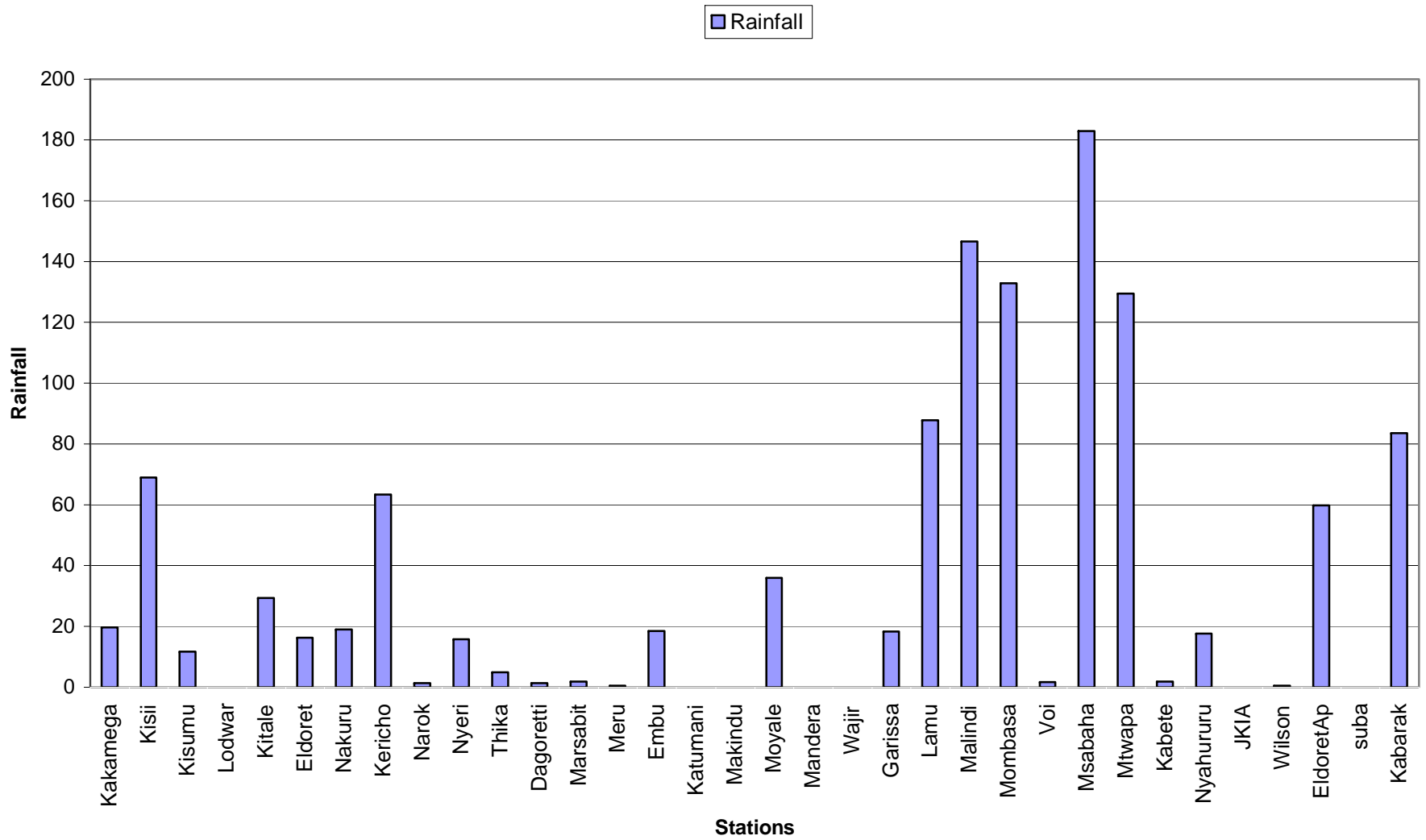


Fig. 1: Actual Rainfall (11th to 20th June 2008)

Dekadal Temperatures

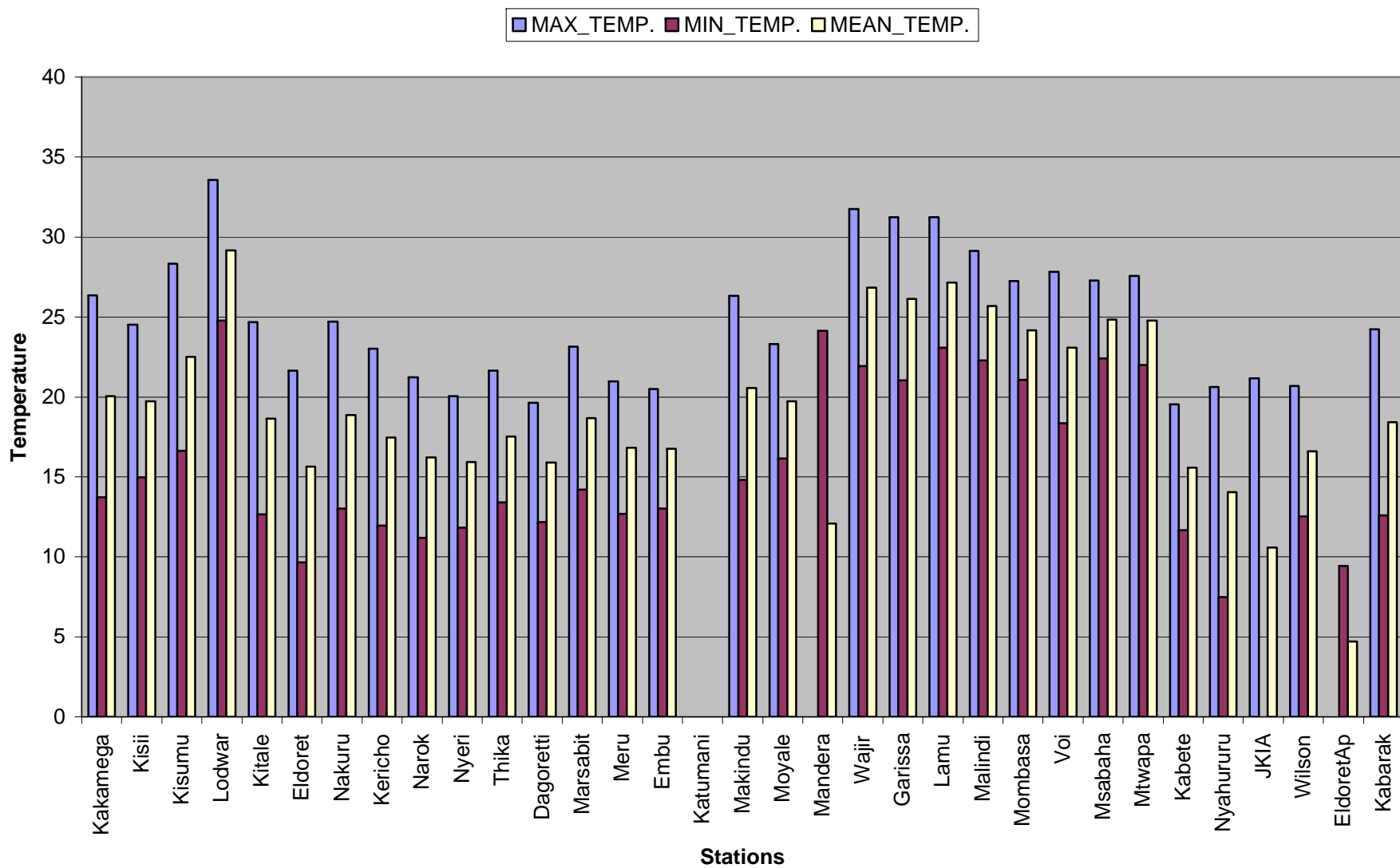


Fig 2: Mean Temperatures (11th to 20th June 2008)

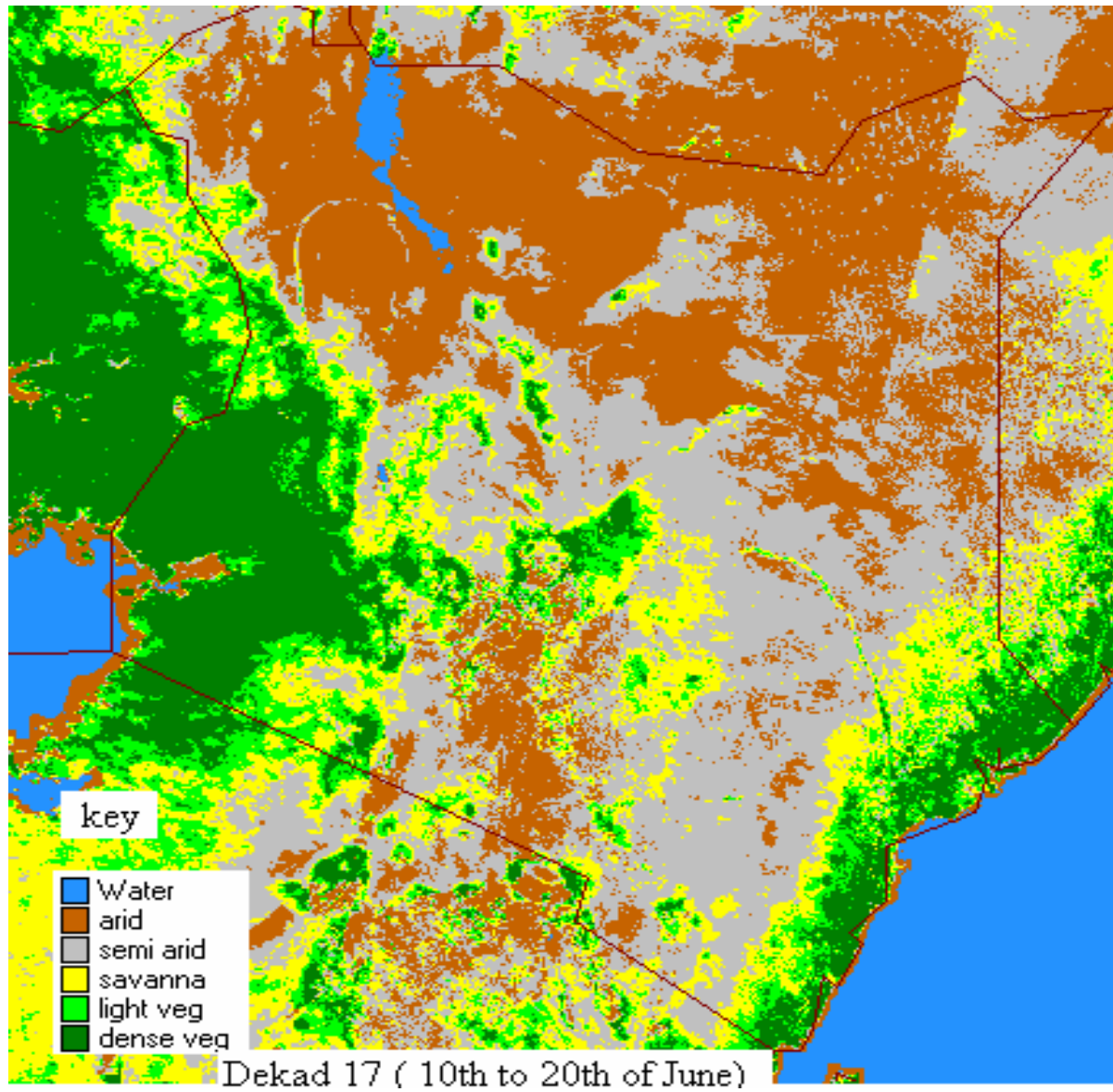


Fig. 3: Normalized Difference Vegetation Index (11th to 20th June 2008)

EXPECTED WEATHER AND CROP CONDITIONS DURING THE NEXT 10 DAYS (21st –30th June 2008).

During the next 10 days Western, Nyanza and Central Rift Valley regions are expected to experience moderate to heavy rainfall over several places. Crops are expected to continue doing well and correspond to normal growth.

Central Highlands, Nairobi area and its environs, are expected to experience cool and cloudy conditions with light rains or drizzles in few places. Crops are expected to continue experiencing water stress especially in the lowland areas resulting in poor grain formation with poor yields being forecasted. For the highland areas of Nyeri and Kirinyaga districts bordering Mt. Kenya crops are expected to continue doing well and correspond to normal growth.

In Eastern Province regions of Embu and Meru districts bordering Mt Kenya are expected to experience cool and cloudy conditions with light rains or drizzles in few places. Crops are expected to continue doing well. In South-Eastern lowlands, dry conditions are expected. Crops are expected to continue experiencing severe water stress due to lack of rainfall resulting in stunted crops with poor or no yields being forecasted.

The coastal regions are expected to experience moderate rainfall. Crops are expected to continue doing well and correspond to normal growth with above normal yields being expected.

In the pastoral regions of Northwestern, Northeastern and South Rift Valley districts hot and dry conditions are expected to prevail, resulting in poor pastures and inadequate drinking water for both human and animal use. The pastoralists may be forced to start migration earlier than is usual in search of pastures and water.

In summary maize crop is at the flowering stage in most places and is corresponding to normal growth. For some parts of Central and Eastern Provinces the maize crop is at the flowering/maturity stages while the bean crop is at the maturity/harvesting stages with poor yields expected due to inadequate rainfall during the season resulting in poor grain filling.

This product should be used in conjunction with Kenya Meteorological Department weather forecasts

Contact information

Kenya Meteorological Department

Agrometeorological Division

Dagoretti Corner, Ngong Road,

P.O. Box 30259, 00100 GPO, Nairobi

Tel: +254 (0)20 3867880-7/3876957/3873682

Fax: +254 (0)20 3876955

E-mail: director@meteo.go.ke

Website: www.meteo.go.ke

©2008 The Kenya Meteorological Department