



KMD

AGROMETEOROLOGICAL BULLETIN

KENYA METEOROLOGICAL DEPARTMENT

32nd Dekad, 11th to 20th November, 2008

Issue No. 32/2008, Season: OND

HIGHLIGHTS

- *During the 32nd Dekad i.e. 11th to 20th November, 2008 significant reduction in rainfall was experienced over the entire Country. Light to moderate rainfall were experienced over Western, Nyanza, Central Rift Valley, provinces, with the following stations recording rainfall Dekadal totals of; Kakamega- 19.9, Kisii-55.8, Kisumu-43.7, Kitale-11.1, Kericho-38.1, Nakuru-32.4, Eldoret-7.5, Eldoret Airport-4.3, Nyahururu-9.0, Narok-5.6 mm. Light to moderate rainfall were experienced over Central Highlands, Nairobi Area and its environs, Eastern Provinces with the following stations recording rainfall Dekadal totals of; Nyeri-31.1, Embu-0.9, Meru-94.1, Marsabit-1.0, Moyale 9.2-, Katumani-25.2, Makindu-2.9 mm. In Nairobi, Dagoretti-16.0, Wilson Airport-34.8, JKIA-25.5mm. The Coast province experienced light rainfall with Mtwapa, Malindi, Mshabaha, Mombasa and Lamu recording 8.5, 0.3, 4.5, 0.09, 69.3 and 4.5mm respectively during the Dekad. The rest of the Country, especially in Northeastern and Northwestern recorded light or Nil rainfall during the Dekadal. (Fig 1&2)*
- *The reduction in rainfall during the Dekad was a drastic change from the previous Dekad when heavy rainfalls have caused serious flooding problems, such as, damage to properties, human displacement, land slides, transportation problems, and loss of human life in some areas especially in Nairobi, Muranga in Central and Budalangi in Nyanza Provinces, Pokot and Mandera districts.*
- *Despite the reduction in rainfall in most parts of the Country, Floods damages and their related impacts are still being experienced in the affected regions, hygienic precautions ought to be taken to prevent outbreaks of dysentery and other water- borne diseases.*

- *Day time temperatures were relatively high over most parts of the country due to persistent sunny conditions. Night temperatures were moderately cool with Nyahururu, Narok, Kericho, and Eldoret Airport recording a minimum of 9.5, 7.9, 9.5, and 8.4 deg Celsius respectively and a Dekadal mean of 11.6, 10.1, 11.0 and 10.1 deg Celsius respectively. (Fig 2&3)*
- *In pastoral regions and game parks of Northern Rift Valley, Southern Rift Valley, North Eastern and South Eastern, there has been some improvement in water sources for both human and animal. Similarly improvement in Pastures regeneration has resulted in fewer incidences of wildlife/human conflict as have been the case earlier in areas bordering game parks and game reserves. (Figs. 1, 2, 3, 4 & 5).*

CROP AND WEATHER REVIEW **(11th to 20th October 2008)**

Central Province and Nairobi area:

Light to moderate rainfall were experienced over several parts of Central province, Nairobi area and its environs. The maize crop is at the emergence stage (at 9th leave stage). First weeding and top dressing is taking place and the crop is doing well and corresponding to normal growth. The bean crop is at the flowering stage and is corresponding to normal growth. (Figs.1, 2, 3 & 4).

Eastern Province:

Light to moderate rainfall were experienced over several parts of Central province, Nairobi area and its environs. The maize crop is at the emergence stage (at 9th leave stage). First weeding and top dressing is taking place and the crop is doing well and corresponding to normal growth. The bean crop is at the flowering stage and is corresponding to normal growth, however too much rainfall may adversely affect the crop especially in the low lying areas due to water-logging. (Figs.1, 2, 3 & 4)

In the Southern Lowlands (Machakos, Makueni, Mwingi and Kitui districts) experienced light rains during the Dekad. The maize and bean crops are at the emergence stage. However, signs of water stress on crops in some regions are being noted due to poor rainfall distribution. Famine and its related impacts is still being experienced in most parts of these region, due to last season crop failure, and food distribution to the most vulnerable livelihoods has been taking place to avert the current food situation.

The poor rainfall performance, both in amounts and distribution in the region has not significantly improved pastures and water situation resulting in poor pasture regeneration and inadequate water for human, livestock and wildlife use . (Figs.1, 2, 3,4,& 5).

Coast Province:

Light rainfall was received in this region during period under review. Planting is complete and the maize crop is at the emergence stages in the few farms under cultivation. Land is normally left furrow during the short rain season. (Figs.1, 2,3&4)

North Eastern Province:

Light or no rainfall at all was experienced during the Dekad. Rainfall in the previous Dekads has resulted in improved pasture regeneration and water sources for livestock, wildlife and human use. However heavy rainfall previously reported in Mandera district still poses serious health risks and likely outbreak of waterborne diseases. Despite the rains, hunger was still being experienced in the region. (Figs.1, 2, 3,4& 5).

Western Province:

Light to moderate rainfall were received in several parts in this region (Kakamega, Bungoma, Busia, Eldoret and Kitale). Harvesting of last season's maize crop is taking place with normal yields being reported. Rains during the harvesting season may hinder both harvesting processes and post-harvest operations. This season's and bean crop ia at the flowering stage and is doing well with normal yields being expected. (Figs.1,2,3 & 4).

Nyanza and Central Rift Valley:

Light to moderate rainfall were received in this region. In Nyanza maize crop is at the flowering stage, second weeding is taking place. For Central Rift Valley crops are doing well and corresponding to normal growth with normal yeilds being expected. In areas around Kisii the maize is at the fowering stages and beans crop is at the maturity stage with normal yields being expected. (Figs 1,2,3 & 4)

Northern and Southern Rift Valley:

Light or no rainfall at all were experienced in most places of the North Western Riftvalley regions during the dekad. Rainfall in the previous Dekad has slightly improved pastures and water sources for livestock, wildlife and human use. Despite the rains, hunger is still being experienced and malnutrition levels are still high, especially among youny children and the elderly. (Figs.1-5).

In the Southern Rift Valley light rains were received during and this was a boost to water sources for both human animal use as well as improvement to pasture rejuvenation. (Figs.1-5).

DEKADAL RAINFALL

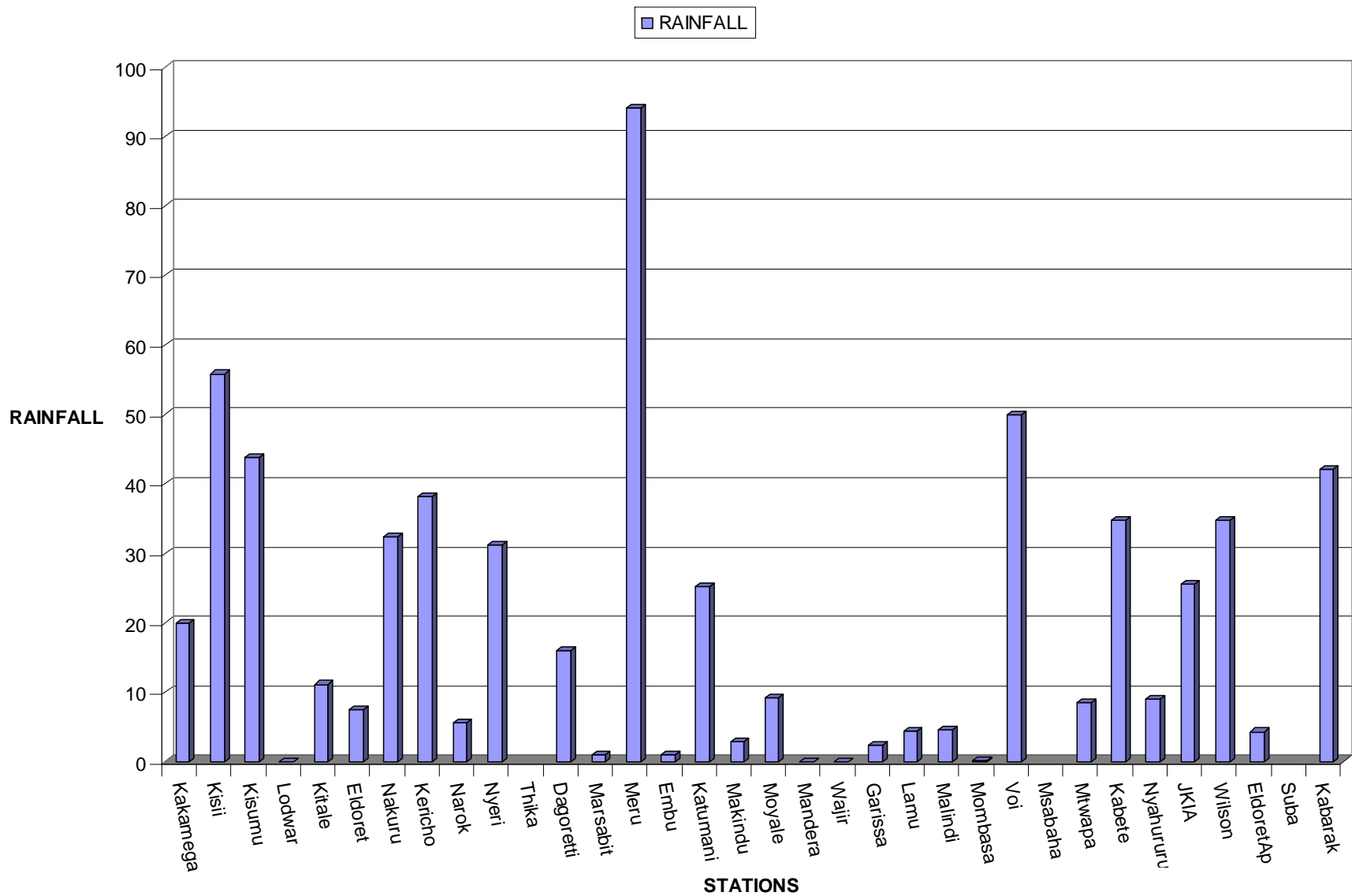


Fig. 1: Actual Rainfall (11th to 20th November 2008) in mm

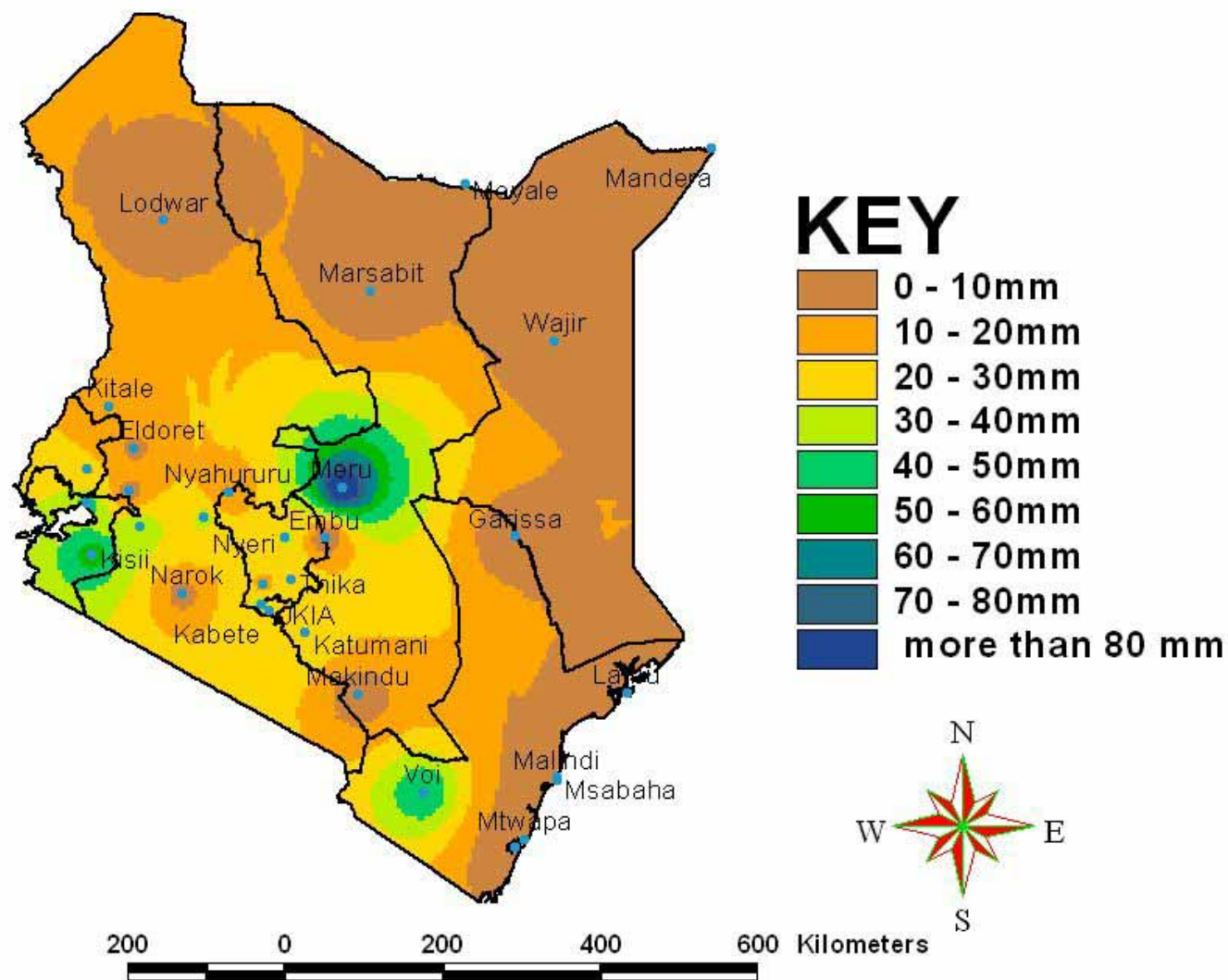


Fig. 2: Actual Rainfall (11th to 20th November 2008) in mm

DEKADAL TEMPERATURES

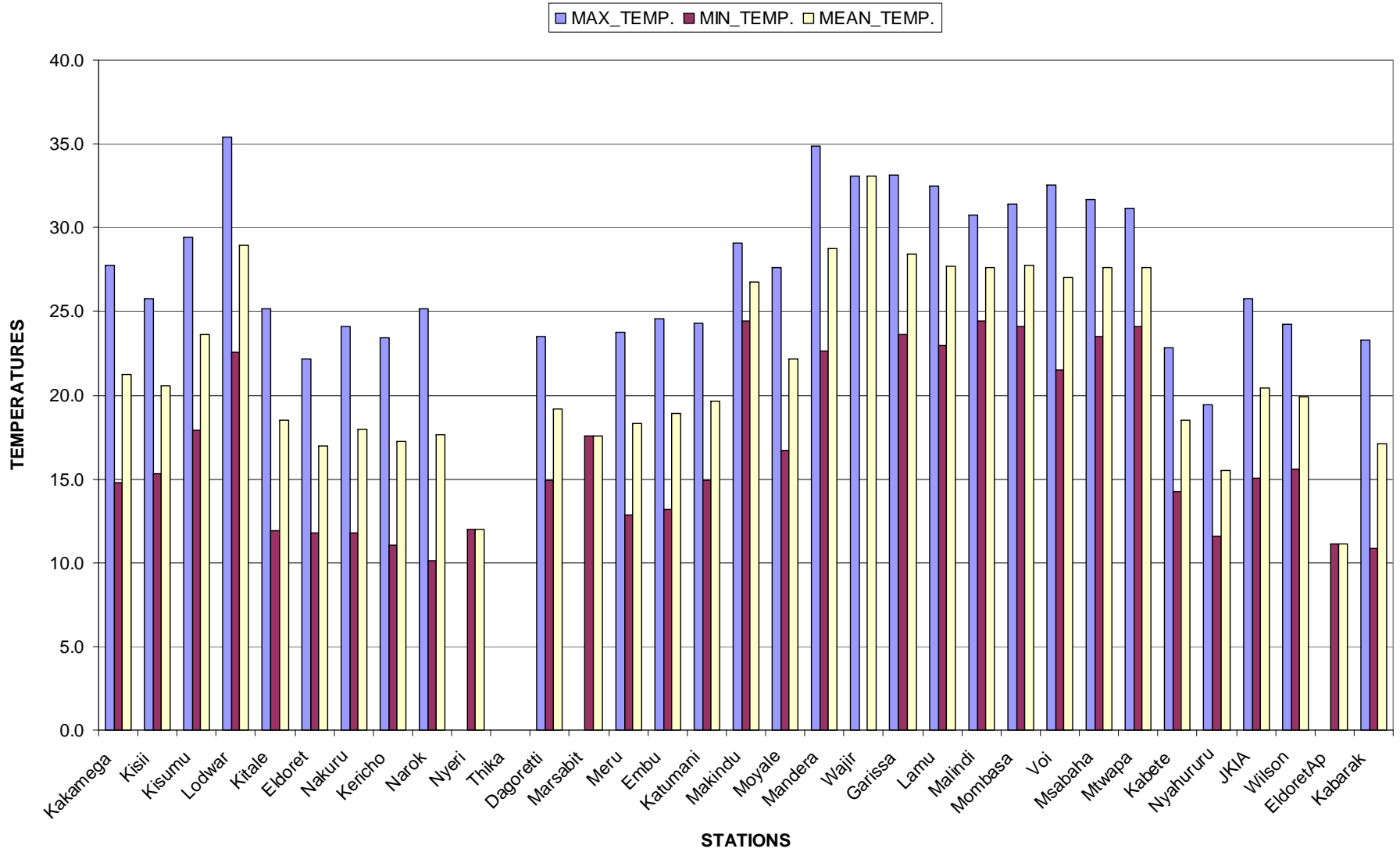


Fig 3: Mean Temperatures (11th to 20th November 2008) deg. Celsius

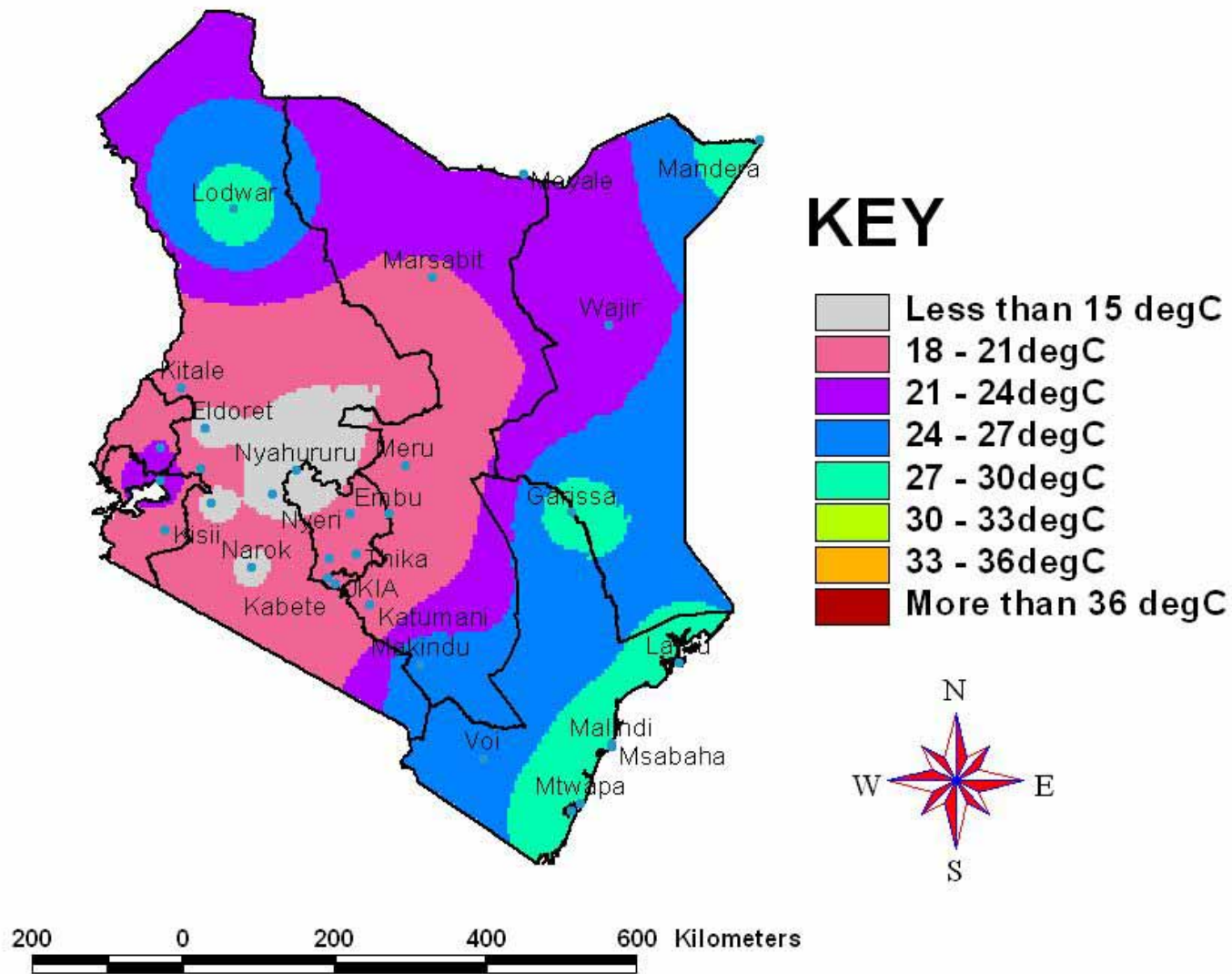


Fig 4: Mean Temperatures (11th to 20th November 2008) deg. Celsius

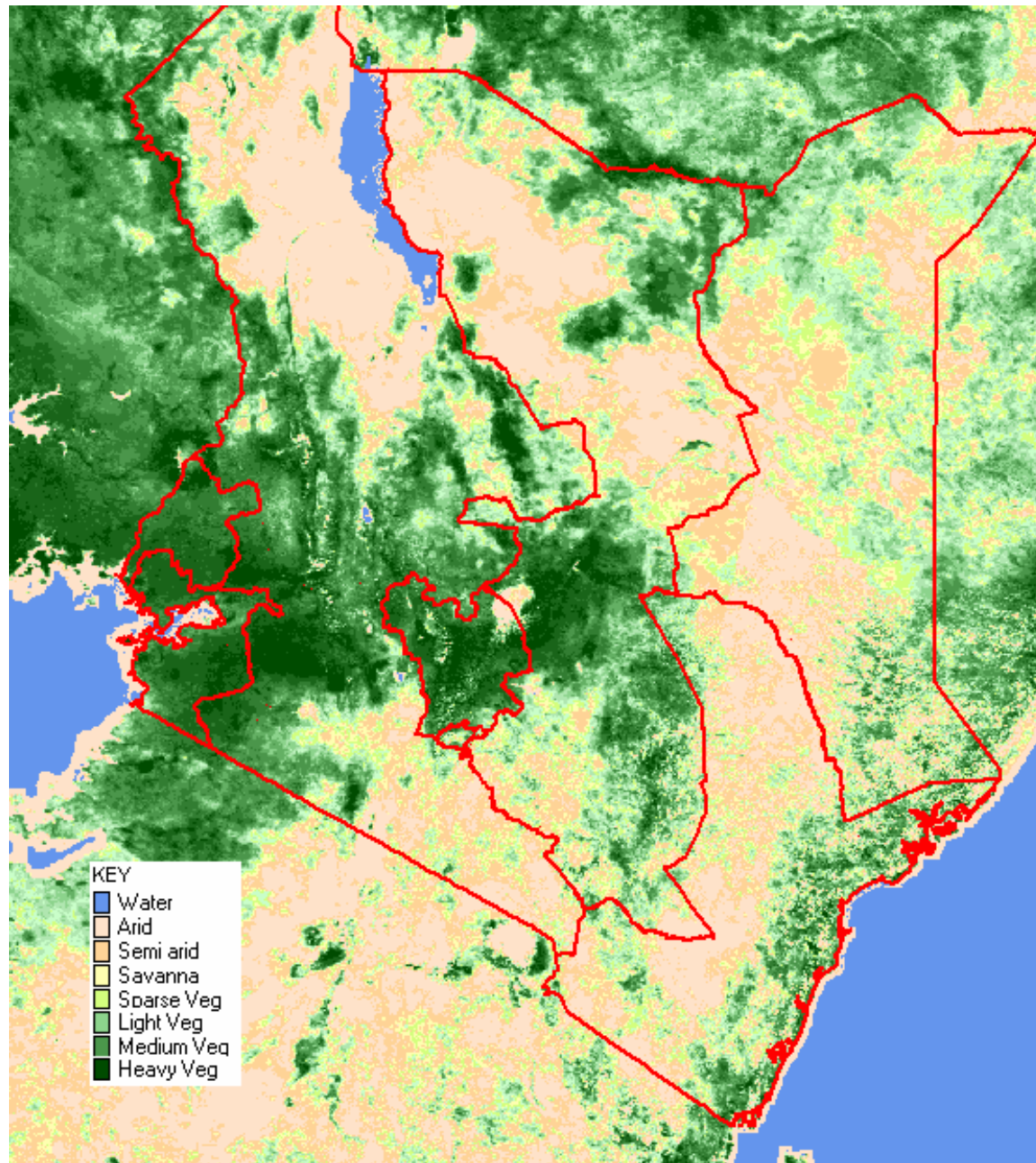


Fig.5: Normalized Difference Vegetation Index (11th to 20th November 2008)

EXPECTED WEATHER AND CROP CONDITIONS DURING THE NEXT 10 DAYS (21st –30th November 2008).

During the next 10 days (21st –30th November 2008), Western, Nyanza and Central Rift Valley regions are expected to experience light to moderate rainfall over few places. Crops are expected to continue doing well and correspond to normal growth.

Central Highlands, Nairobi area and its environs, are expected to experience light to moderate rainfall in few places. Crops are expected to continue doing well and correspond to normal growth.

In Eastern Province regions of Embu and Meru districts, bordering Mt Kenya, are expected to experience light to moderate to rainfall in few places. Crops are expected to continue doing well and correspond to normal growth.

In South-Eastern lowlands, are expected to experience light rainfall over few places, resulting in inadequate pastures and water sources for human, livestock and wildlife use. Crops are expected to start experiencing water stress in some regions due to prolonged dry spells. Despite the previous heavy rainfall downpours, food insecurity among the most vulnerable livelihoods will continue.

The Coastal region is expected to experience light to moderate rainfall. Crops are expected to continue doing well and correspond to normal growth.

In the pastoral regions of Northwestern, Northeastern and South Rift Valley districts light or no rains at all are expected resulting in depressed pastures regeneration and water sources for human and animal/wildlife use. However, the soil-water status is adequate to sustain the current pasture conditions for some time.

In summary few wet conditions will continue being experienced over several parts of the Country. Crops are expected to continue doing well and correspond to normal growth. Harvesting is expected to continue in Western Kenya around Kitale and Eldoret with normal yields being expected.

This product should be used in conjunction with Kenya Meteorological Department weather forecasts.

For more information, Contact:

The Kenya Meteorological Department

Agrometeorological Division

Dagoretti Corner, Ngong Road,

P.O. Box 30259, 00100 GPO, Nairobi

Tel: +254 (0)20 3867880-7/3876957/3873682

Fax: +254 (0)20 3876955

E-mail: agromet@meteo.go.ke

Website: www.meteo.go.ke

©2008 The Kenya Meteorological Department