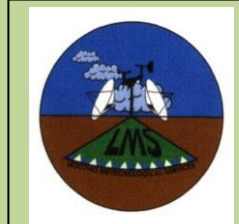




**LESOTHO METEOROLOGICAL SERVICES**  
(LEKALA LA TSA BOLEPI)



**Agrometeorological Bulletin**

Period: 21 - 30 November 2014

**Issue No.:**3/18

**Release Date:** 04/12/2014

**Season:** 2014/15

**Contents**

**Page**

**Moisture and Heat Status ...1**

**RAINFALL SITUATION...1**

**TEMPERATURES ..... 1**

**Crop Stage and Conditions ...2**

**Rangelands and Livestock...2**

**Rangeland Conditions...2**

**Livestock Conditions...3**

**Outlook for 03 - 11 December  
2014 ..... 3**

**Highlights**

- Good rains continue unabated
- Below average temperatures experienced countrywide
- Rangelands continue to improve
- Maize at emergent stage in the foothills and lowlands
- Maize on third leaf in the mountains.

The Director  
Lesotho Meteorological Services  
Applications Section  
P.O. Box 14515  
Maseru 100, Lesotho

TEL: (+266) 22324374  
FAX: (+266) 22325057/22350325  
E-mail: [agrometeorology@lesmet.org.ls](mailto:agrometeorology@lesmet.org.ls)  
<http://www.lesmet.org.ls>

## MOISTURE AND HEAT STATUS

### RAINFALL SITUATION

The third dekad of November received above average rainfall, which was much higher when compared to the previous season's dekad of the same month (see Figure 1 below).

#### National Rainfall Analysis

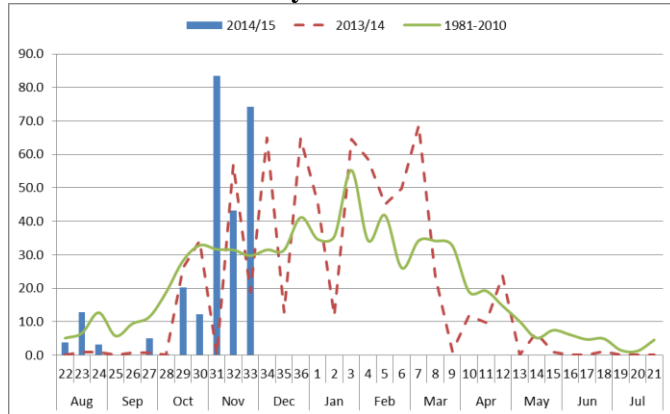


Figure 1: Seasonal rainfall distribution as of 3rd dekad November 2014

Semonkong had 7 days of rainfall, followed by Thaba-Tseka which had 6 days. Oxbow and Mohale’s Hoek had 5 days of rainfall while Leribe, Butha-Buthe, Quthing and Phuthiatsana had 4 days, with Moshoeshoe-I and Qacha’s Nek having 3 days and 2 days respectively (*Error! Reference source not found.*).

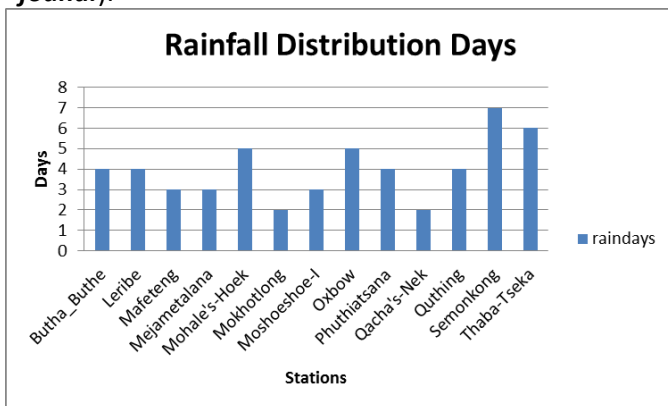
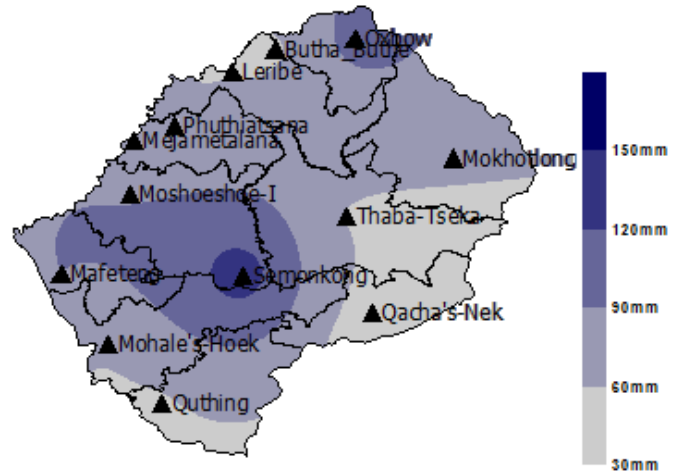


Figure 2: Rainy days during 21 - 30 November 2014

Semonkong recorded the highest rainfall amount ranging from 137mm, followed by Oxbow which registered rainfall ranging at 101mm. Mokhotlong, Mejametalana, Mafeteng, Mohale’s

Hoek, Moshoeshoe-I and Phuthiatsa received rainfall ranging from 60mm – 90mm. Leribe, Butha-Buthe, Qacha’s Nek Thaba-Tseka and Quthing observed the lowest rainfall ranging between 30mm – 60mm (see *Error! Reference source not found.* below).



Map 1: Rainfall distribution for 21 - 30 November 2014

November rainfall has been above the long-term mean as depicted by the anomaly chart below unlike the preceding months (September, October) which largely received below normal rainfall (refer to Figure 3).

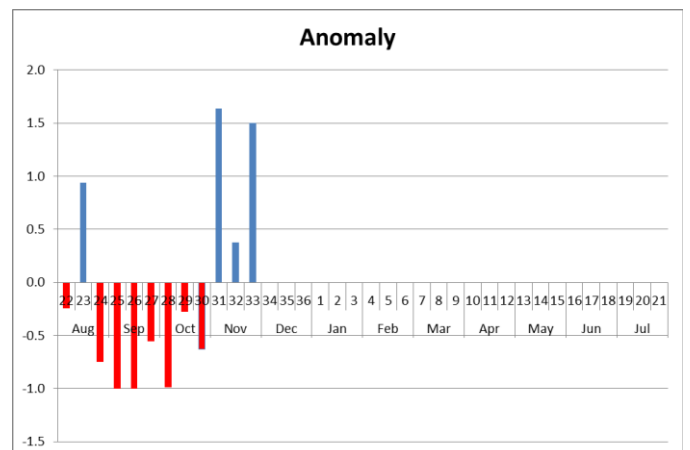


Figure 3: Percentage departure from normal as of 3rd dekad November 2014

### TEMPERATURES

Below normal temperatures (both Maximum and minimum) were experienced during this period over the entire country (See Table 1). The highest average temperature of 21.7°C was recorded at Leribe while Oxbow registered lowest average of 3.2°C.

Table 1: Temperatures (°C) for second Dekad of November 2014

3rd Dekad - November				
STATION	ELEMENT	ACTUAL	Average	Anomaly
Butha	Max	21	24.5	-3.5
Buthe	Min	10.7	12.5	-1.8
Leribe	Max	21.7	25.5	-3.8
	Min	9.6	11.4	-1.8
Mafeteng	Max	21.3	25.7	-4.4
	Min	7.8	11.4	-3.6
Mejamet alana	Max	21.6	26.6	-5.0
	Min	10.2	12.2	-2.0
Mohaless Hoek	Max	22.6	26.1	-3.5
	Min	10.4	11.7	-1.3
Mokhotlong	Max	19.9	22.9	-3.0
	Min	7.6	8.9	-1.3
Moshoes hoe 1	Max	21.1	25.9	-4.8
	Min	9.1	12.5	-3.4
Oxbow	Max	13.7	16.4	-2.7
	Min	3.2	4.5	-1.3
Phuthiatsane	Max		26.0	-26.0
	Min	9.6	12.6	-3.0
Qachas Nek	Max	20.4	23.2	-2.8
	Min	7.6	10.4	-2.8
Quthing	Max	21.3	25.5	-4.2
	Min	9.5	12.9	-3.4
Semonkong	Max	17	20.6	-3.6
	Min	4.5	6.8	-2.3
Thaba Tseka	Max	19.5	22.5	-3.0
	Min	6.9	9.0	-2.1

**CROP STATUS**  
**CROP STAGE AND CONDITIONS**

**Maize Crop Stage and Condition**

**Mountains**

Maize is on third leaf in most of the fields and at emergent stage at some fields (see Figure 4 below)



Figure 4: Maize at third leaf in Mokhotlong

**Lowlands, Foothills and Sengu River Valley**

Maize is at emergent stage in most of the fields (See figure 5 below)



Figure 5: Maize at emergent stage in the lowlands

**Current Farming Activity**

**Mountains**

Weeding is taking place at the fields where crops are at third leaf.

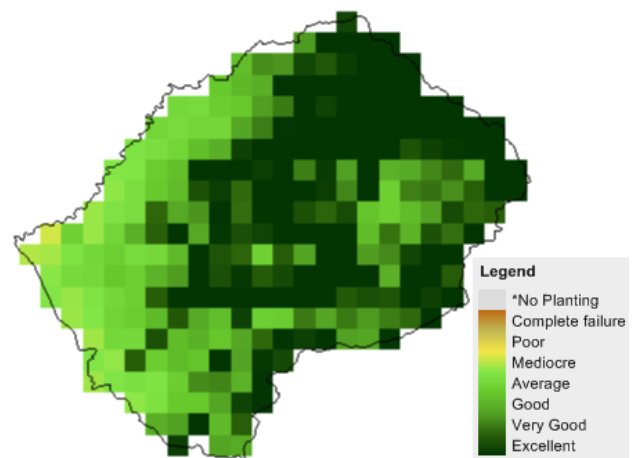
**Lowlands, Foothills and Sengu River Valley**

Sowing activities are continuing at most areas under these agro-ecological zones.

**RANGELANDS AND LIVESTOCK**

**RANGELAND CONDITIONS**

Almost the entire country shows a significant improvement of grasslands as good rains also continued. (Refer Map. 2 below)



Map.2: Vegetation cover as at the end of third dekad of November 2014

## **LIVESTOCK CONDITION**

No report

## **OUTLOOK FOR 03-11 DECEMBER 2014**

### **Rainfall**

Good rains are still anticipated especially over the northern lowlands (Butha-Buthe & Leribe) and highlands (Oxbow), eastern highlands (Mokhotlong) and extreme southern (Quthing) parts of the country.

### **Temperature**

Normal to below normal temperatures expected.

### **Soil Moisture**

Adequate soil moisture still to be sustained.

