

DEKADAL WEATHER REVIEW

No: 09. 2014/15 Cropping Season

Review for December 1-10, 2014 and Outlook for December 11-20, 2014

HIGHLIGHT

- During *December 1-10, 2014*, seasonal rains continued to feature in most places over both the bimodal and unimodal areas of the country. The rainfall provided favorable conditions for crops and pasture development over the bimodal areas while over the unimodal areas it was favourable for crops at emergence stage.
- The expected rainfall during *December 11-20, 2014* may be favourable for crops development over the bimodal areas and crop establishment over the unimodal areas.
- Community is advised to take precautionary measures for people's safety and properties where thunderstorms are predicted.

SYNOPTIC SUMMARY DURING DECEMBER 1-10, 2014

During December 1-10, 2014, high pressure systems over the northern hemisphere (Azores and Siberian highs) remained fairly strong while the high pressure systems in the southern hemisphere (St Hellena and Mascarene highs) relaxed contributing to significant southward shifting of the Inter-Tropical Convergence Zone (ITCZ) over the country. Northeasterly wind flow and occasional easterly flow continued to dominate a greater part of the country while westerly wind flowing over the western areas resulted into persistent wind convergence. The above configuration associated with abundant moisture over the lower levels contributed to enhanced rainfall activities over the western and southwestern highlands.

WEATHER SUMMARY DURING DECEMBER 1-10, 2014

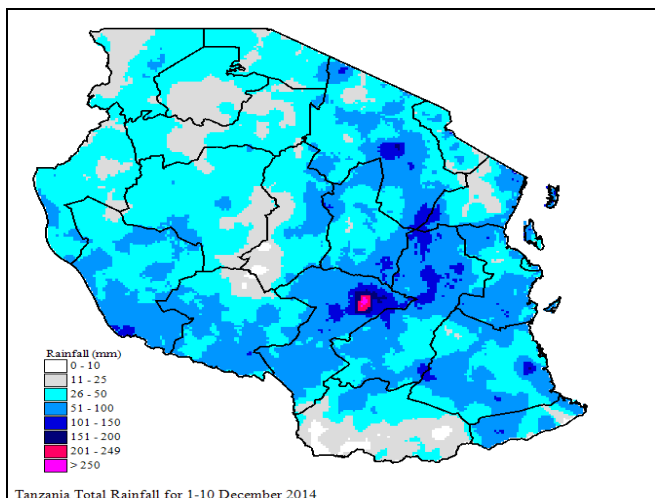


Figure 1: Improved rainfall estimates showing total rainfall distribution during December 1-10, 2014.

In view of the observed synoptic conditions, seasonal rains continued to feature in most places over both the bimodal and unimodal areas of the country. Figure 1 shows improved Rainfall Estimates from Satellite Rainfall Estimates merged with gauge data from Tanzania rainfall stations network showing total rainfall distribution in the country whereby the highest total rainfall was 201-249mm observed Over Iringa in the south-western highlands.

AGROMETEOROLOGICAL SUMMARY DURING DECEMBER 1-10, 2014

During December 1-10, 2014, the observed rainfall over the bimodal areas was reported to provide adequate soil moisture for crops and pasture development. Maize crop was reported at flowering stage over much of the bimodal areas and were in good condition. Over the unimodal areas, the observed seasonal rainfall provided favourable conditions for crops which were mostly at emergence stage. Water and pasture availability for livestock and wildlife were good over the bimodal areas and moderate over the unimodal areas.

HYDROLOGICAL CONDITIONS DURING DECEMBER 1-10, 2014

Water levels in dams and river flow discharges were moderate, with improvements over the bimodal areas.

ENVIRONMENTAL CONDITIONS DURING DECEMBER 1-10, 2014

During December 1-10, 2014 moderate to high temperature conditions prevailed in the country.

EXPECTED SYNOPTIC CONDITIONS DURING DECEMBER 11-20, 2014

During December 11-20, 2014 the northern hemisphere high pressure systems (Azores and Siberian highs) are expected to remain intense thus allowing the ITCZ to move further southwards over the country. On the other hand, southern hemisphere high pressure systems (St Helena and Mascarene highs) are expected to remain relaxed with occasional intensification of the St Helena high pressure system. Warm Sea Surface Temperatures (SSTs) are expected over the South-west Indian Ocean and are likely to influence easterly wind flow pattern. Low level westerly flow over the western part of the country is expected to allow moisture influx over those areas.

EXPECTED WEATHER DURING DECEMBER 11-20, 2014

Lake Victoria Basin (Kagera, Geita, Mwanza, Mara, Simiyu and Shinyanga regions together with northern Kigoma regions): occasional thunderstorms and rain showers are expected. Northern coast (Dar es Salaam, Morogoro and Tanga regions, the isles of Unguja and Pemba): occasional rain showers and thunderstorms are expected over most areas. North Eastern Highlands (Kilimanjaro, Arusha and Manyara regions): rain showers and isolated thunderstorms are expected. Western regions (Kigoma, Rukwa and Tabora regions): occasional thunderstorms and rain showers are expected. Central areas (Dodoma and Singida regions): mainly dry conditions are expected. South-western highlands (Southern Rukwa, Katavi, Njombe, Iringa and Mbeya region): occasional thunderstorms and rains are expected. Southern Coast (Mtwara and Lindi regions): rain showers and isolated thunderstorms are expected. Southern region (Ruvuma region): occasional rain showers are expected.

AGROMETEOROLOGICAL OUTLOOK AND ADVISORY DURING DECEMBER 11-20, 2014

The expected rainfall over the bimodal areas during December 11-20, 2014 may be favorable for crops development at advanced vegetative stages as well as pasture development. Over the unimodal areas, the expected rainfall will be favourable for crops at establishment stage. However, soil moisture conservation measures for crops are recommended especially where dry conditions are expected (central areas). Where thunderstorms are expected, community is advised to take precautionary measures for people's safety and their properties. Farmers are also advised to seek professional advice from nearby Agricultural extension and livestock officers.

BIMODAL AND UNIMODAL AREAS

1. Bimodal areas: Areas which experience two rainfall seasons (Oct - Dec/Jan and March - May). These are areas covering Lake Victoria Basin (Kagera, Geita, Mwanza, Mara, Simiyu and Shinyanga regions including northern parts of Kigoma region), northern coast (Dar es Salaam, Morogoro and Tanga regions together with the Isles of Unguja and Pemba) and northeastern highlands (Kilimanjaro, Arusha and Manyara regions).

2. Unimodal areas: Areas which experience one rainfall season (Nov - Apr). These are areas covering western areas (Kigoma, Rukwa, Katavi and Tabora regions), central areas (Dodoma and Singida regions), southwestern highlands (Njombe, Iringa and Mbeya region), southern coast (Mtwara and Lindi regions) and southern areas (Ruvuma region).

Prepared by

TANZANIA METEOROLOGICAL AGENCY

3rd, 4th & 10th Floors - Ubungo Plaza - Morogoro Road.

P.O. Box 3056 Tel. 255 -(0) 22 - 2460706-8 ; Fax: 255 - (0) 22 - 2460718 E-mail: (1) met@meteo.go.tz (2) agromet1_tz@meteo.go.tz

Dar es Salaam UNITED REPUBLIC OF TANZANIA