

## DEKADAL WEATHER REVIEW

### HIGHLIGHTS

- Below normal rainfall performance was observed over a large part of the country during May 1-10, 2016.
- Crops growth and development over the bimodal area progressed well; crops were in average condition over much of the country despite below normal rainfall.
- The expected rainfall over the bimodal area during May 11-20, 2016 may favour development of maize crop at vegetative stages; farmers are advised to get consultation from agricultural extension officers in their localities.

No: 24. 2015/16 Cropping Season

Review for May 1-10, 2016 and Outlook for May 11-20, 2016

### SYNOPTIC SUMMARY DURING MAY 1-10, 2016

During the period, the southern hemisphere high-pressure systems (St. Helena and Mascarene) continued to intensify while their counterparts to the north (Azores and Siberian) relaxed causing the Inter-tropical Convergence Zone (ITCZ) to continue moving northwards from its current position over northern part of Tanzania. The slightly warm Sea Surface Temperatures (SSTs) over the South-Eastern Atlantic Ocean, closer to Angola coast, South-Western Indian Ocean and Central Indian Ocean persisted. However, pocket of neutral conditions within the Central Indian Ocean towards South-Western Indian Ocean were observed. On the other hand neutral to warm SSTs were observed over the North-West Indian Ocean (closer to Somali coast)

### RAINFALL PERFORMANCE DURING MAY 1-10, 2016

As a result of the observed synoptic conditions, a large part of the country experienced below normal rainfall performance except areas over Lake Victoria basin, Western part of the country and South-Western highlands.

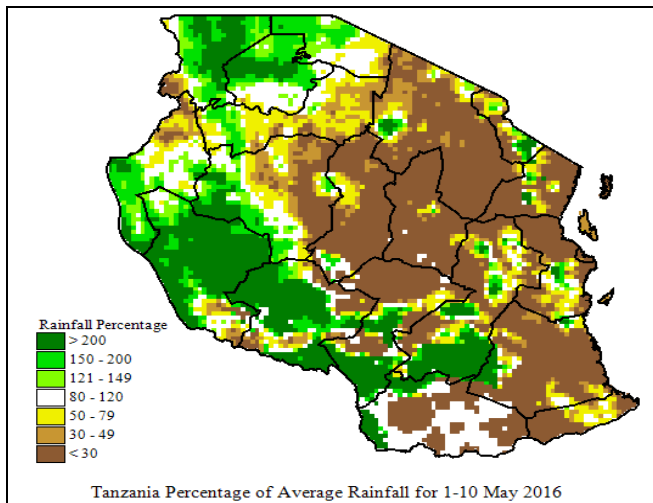


Figure 1: Rainfall performance during May 1-10, 2016 as percentage of long term average.

Figure 1 is Satellite Rainfall Estimates merged from GeoWRSI model merged with gauge data from Tanzania rainfall stations network showing rainfall performance in Tanzania as percentage of long term average during the period, whereby the green and greenish yellow legends indicate above normal rainfall performance whereas the brownish and yellow legends indicate below normal rainfall performance.

### TEMPERATURE CONDITIONS DURING MAY 1-10, 2016

Moderate to low temperature conditions prevailed across the country.

### AGROMETEOROLOGICAL SUMMARY DURING MAY 1-10, 2016

Crops performance was average across the country even in areas which featured below average rainfall performance. Over the bimodal areas, maize crop was at ninth leaf stage in many places including Tanga, Kilimanjaro and Coastal regions whereas over Mara and Morogoro regions the crop was at tassaling stage. For unimodal areas on the other hand, the maize crop has already entered full maturity stage and are in good condition. Pasture and water availability for livestock and wildlife was good.

### HYDROLOGICAL CONDITIONS DURING MAY 1-10, 2016

Water levels in dams and river flow discharges were moderate across the country.

**EXPECTED SYNOPTIC CONDITIONS DURING  
MAY 11-20, 2016**

During the period, the southern high-pressure systems (St. Helena and Mascarene) are expected to intensify significantly, while their counterparts to the north (Azores and Siberian) are expected to relax and allow the ITCZ to continue moving northward into northern hemisphere. Warm SSTs are expected over Central Indian Ocean and South-Eastern Atlantic Ocean closer to Angola coast, while slightly warm to neutral SSTs are expected over the South-Western Indian Ocean. Neutral to warm SSTs in the North-West Indian Ocean (closer to Somali coast) are expected to persist. These conditions are expected to influence wet conditions over the North-Western, Northern and Eastern (extreme northern coast areas) parts of the country. The remaining parts of the country are expected to experience mainly dry conditions.

**HYDROLOGICAL OUTLOOK DURING MAY  
11-20, 2016**

Hydrological conditions are expected to remain moderate to most areas of the country..

**EXPECTED WEATHER DURING  
MAY 11-20, 2016**

Lake Victoria Basin (Kagera, Mwanza, Mara, Geita, Simiyu and Shinyanga regions): rain showers and thunderstorms are expected. Northeastern highlands (Kilimanjaro, Arusha and Manyara regions) and Northern coast (Dar es Salaam, Morogoro and Tanga regions, the isles of Unguja and Pemba): few rain showers are expected. Western regions (Kigoma, Katavi and Tabora regions): few rain showers and thunderstorms are expected during the period. Central areas (Dodoma and Singida regions), Southwestern highlands (Rukwa, Iringa and Mbeya regions), Southern Coast (Mtwara and Lindi regions): mainly dry with few isolated, rain showers are expected during the period. Southern region (Ruvuma region): few rain showers and thunderstorms are expected during the period.

**AGROMETEOROLOGICAL OUTLOOK AND  
ADVISORY DURING MAY 11-20, 2016**

The expected rainfall over both the bimodal areas during May 11-20, 2016 may favour development of maize crop at vegetative stages. However, farmers are advised to get consultation from Agricultural Extension Officers in their localities.