

DEKADAL WEATHER REVIEW

HIGHLIGHTS

- Below normal rainfall performance continued to feature over most parts of the country during May 11-20, 2016.
- Crops over the bimodal area were reported in average condition in many places despite below normal rainfall during the period.
- With the expected dry conditions over most of the country during May 21-31, 2016, farmers over the bimodal area are recommended to seek advice from agricultural extension officers in their localities for appropriate mitigation measures.

No: 25. 2015/16 Cropping Season

Review for May 11-20, 2016 and Outlook for May 21-31, 2016

SYNOPTIC SUMMARY DURING MAY 11-20, 2016

High pressure systems in the southern hemisphere (St. Helena and Mascarene) continued to intensify while their counterparts to the north (Azores and Siberian) continued to relax causing the Inter-tropical Convergence Zone (ITCZ) to continue moving northwards. The slightly warm Sea Surface Temperatures (SSTs) over the South-Eastern Atlantic Ocean, closer to Angola coast, South-Western Indian Ocean and Central Indian Ocean persisted. However, pocket of neutral to cool conditions within the Central Indian Ocean towards South-Western Indian Ocean were observed. On the other hand neutral to warm SSTs were observed over the North-West Indian Ocean (closer to Somali coast) were observed

RAINFALL PERFORMANCE DURING MAY 11-20, 2016

As a result of the observed synoptic conditions, most of the country experienced dry conditions as shown in Figure 1 below (Satellite rainfall estimates from GeoWRSI model merged with gauge data from Tanzania rainfall stations network).

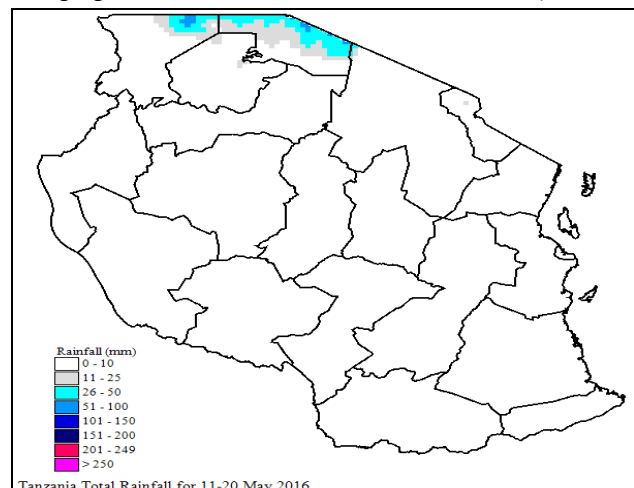


Figure 1: Total rainfall distribution during May 11-20, 2016

Figure 2 also shows rainfall performance during the period as percentage of long term average whereby, almost the entire country experienced below normal rainfall performance compared to the long term mean. On Figure 2, both brown and yellow legends indicate below normal rainfall performance.

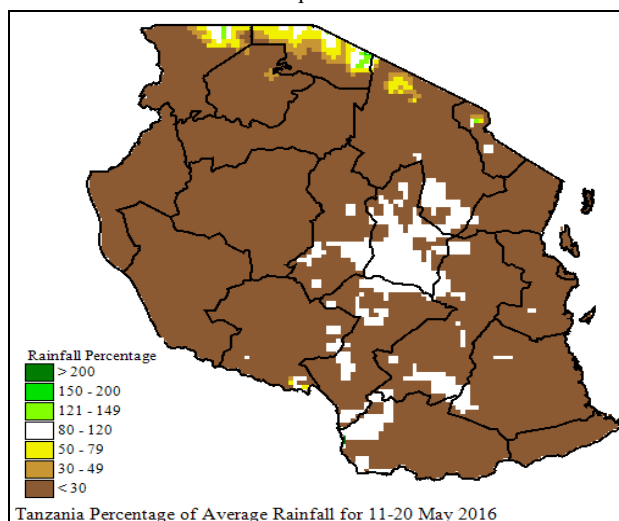


Figure 2: Rainfall performance during May 11-20, 2016 as percentage of long term average.

TEMPERATURE CONDITIONS DURING MAY 11-20, 2016

Relatively low temperature conditions prevailed across the country.

AGROMETEOROLOGICAL SUMMARY DURING MAY 11-20, 2016

Crops growth and development over much of the bimodal area progressed well. Maize crop at various stages was reported in average condition despite below average rainfall performance. Pasture and water availability for livestock and wildlife was also average.

HYDROLOGICAL CONDITIONS DURING MAY 11-20, 2016

Water levels in dams and river flow discharges were moderate across the country.

EXPECTED SYNOPTIC CONDITIONS DURING MAY 21-31, 2016

During the period, the southern high-pressure systems (St. Helena and Mascarene) are expected to continue intensifying, while their counterparts to the north (Azores and Siberian) are expected to relax and allow the ITCZ to continue moving northward. Warm SSTs are expected over Central Indian Ocean and South-Eastern Atlantic Ocean closer to Angola coast, while slightly warm to neutral SSTs are expected over the South-Western Indian Ocean. Neutral to warm SSTs in the North-West Indian Ocean (closer to Somali coast) are expected to persist. These conditions are expected to cause strong southerly winds and influence dry and cool conditions over most parts of the country.

EXPECTED WEATHER DURING MAY 21-31, 2016

Lake Victoria Basin (Kagera, Mwanza, Mara, Geita, Simiyu and Shinyanga regions), **North-eastern highlands** (Kilimanjaro, Arusha and Manyara regions), **northern coast** (Dar es Salaam, Morogoro and Tanga regions, the isles of Unguja and Pemba), **western regions** (Kigoma, Katavi and Tabora regions), **central areas** (Dodoma and Singida regions) and **southern coast**: mainly dry conditions with few isolated rain showers are expected. **Southwestern highlands** (Rukwa, Iringa and Mbeya regions), (Mtwara and Lindi regions) and **Southern region** (Ruvuma region): mainly dry conditions with few rain showers over high grounds are expected. Short periods of strong winds are expected over Lake Victoria basin, northern coast, south-western highlands and western regions.

AGROMETEOROLOGICAL OUTLOOK AND ADVISORY DURING MAY 21-31, 2016

With the expected dry conditions over most of the country during May 21-31, 2016, maize crops in some places of the bimodal area, especially low altitude areas may experience soil moisture deficit. Farmers are recommended to seek advice from agricultural extension officers in their localities for appropriate mitigation measures.

HYDROLOGICAL OUTLOOK DURING MAY 21-31, 2016

Hydrological conditions are expected to slightly decrease over most parts of the country due to persistent dry conditions coupled with strong winds.

Prepared by

TANZANIA METEOROLOGICAL AGENCY

3rd, 4th & 10th Floors - Ubungo Plaza - Morogoro Road.

P.O. Box 3056 Tel. 255 -(0) 22 - 2460706-8 ; Fax: 255 - (0) 22 - 2460718 E-mail: (1) met@meteo.go.tz (2) agromet1_tz@meteo.go.tz

Dar es Salaam UNITED REPUBLIC OF TANZANIA