

DEKADAL WEATHER REVIEW

HIGHLIGHTS

- Below normal rainfall performance continued to feature over most parts of the country during May 21-31, 2016.
- Maize Crop in many places of the bimodal area, especially north-eastern highlands was reported in average condition despite below normal rainfall during the period.
- With the expected dry conditions during June 1-10, 2016, farmers especially over north-eastern highlands are recommended to seek advice from agricultural extension officers in their localities for possible appropriate mitigation measures.

No: 26. 2015/16 Cropping Season

Review for May 21-31, 2016 and Outlook for June 1-10, 2016

SYNOPTIC SUMMARY DURING MAY 21-31, 2016

High pressure systems in the southern hemisphere (St. Helena and Mascarene) continued to intensify while their counterparts to the north (Azores and Siberian) continued to relax, causing the Inter-tropical Convergence Zone (ITCZ) to continue moving northwards. For the case of Sea Surface Temperatures (SSTs), slightly warm SSTs over the South-Eastern Atlantic Ocean, closer to Angola coast, South-Western Indian Ocean and Central Indian Ocean persisted. However, pocket of neutral to cool conditions within the Central Indian Ocean towards South-Western Indian Ocean were observed. On the other hand neutral to warm SSTs were observed over the North-West Indian Ocean (closer to Somali coast).

RAINFALL PERFORMANCE DURING MAY 21-31, 2016

In view of the observed synoptic conditions during the period, most of the country continued to experience below normal rainfall performance as shown in Figure 1 below (Satellite rainfall estimates from GeoWRSI model merged with gauge data from Tanzania rainfall stations network showing rainfall performance as percentage of long term average).

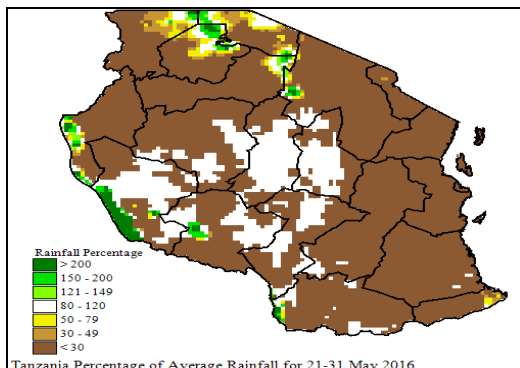


Figure 1: Rainfall performance during May 21-31, 2016 as percentage of long term average.

TEMPERATURE CONDITIONS DURING MAY 21-31, 2016

Note: On Figure 1, green legend indicates above normal whereas brown and yellow legends indicate below normal rainfall performance.

Relatively colder temperatures prevailed across the country during the period.

AGROMETEOROLOGICAL SUMMARY DURING MAY 21-31, 2016

Crops, especially maize crop was reported in average condition despite below average rainfall performance. Maize growth and development was reported to progress well in Kilimanjaro, Tanga and Arusha regions. Pasture and water availability for livestock and wildlife in the country was average

HYDROLOGICAL CONDITIONS DURING MAY 21-31, 2016

Water levels in dams and river flow discharges were moderate across the country.

EXPECTED SYNOPTIC CONDITIONS DURING JUNE 1-10, 2016

During the period, the southern high-pressure systems (St. Helena and Mascarene) are expected to continue intensifying, while their counterparts to the north (Azores and Siberian) are expected to relax and allow the ITCZ to continue moving northward. Warm SSTs are expected to persist over Central Indian

Ocean and South-Eastern Atlantic Ocean closer to Angola coast. Similarly, slightly warm to cool SSTs over the South-Western Indian Ocean and neutral to warm SSTs in the North-West Indian Ocean (closer to Somali coast) are expected to persist. These conditions are expected to cause strong southerly winds and influence dry and cool conditions over most parts of the country.

HYDROLOGICAL OUTLOOK DURING JUNE 1-10, 2016

Hydrological conditions are expected to slightly decrease due to persistent dry conditions coupled with strong winds.

EXPECTED WEATHER DURING JUNE 1-10, 2016

Lake Victoria Basin (Kagera, Mwanza, Mara, Geita, Simiyu and Shinyanga regions): mainly dry conditions with few isolated rain showers and thunderstorms. North-eastern highlands (Kilimanjaro, Arusha and Manyara regions): mainly dry conditions with few isolated rain showers. Northern coast (Dar es Salaam, Morogoro and Tanga regions, the isles of Unguja and Pemba): mainly dry conditions with few isolated rain showers, especially during first half of the period. Western regions (Kigoma, Katavi and Tabora regions): mainly dry conditions with few isolated rain showers. Central areas (Dodoma and Singida regions): mainly dry conditions with few isolated rain showers. South-western highlands (Rukwa, Iringa, Songwe and Mbeya regions): mainly dry conditions with few rain showers over high grounds. Southern Coast (Mtwara and Lindi regions): mainly dry with few isolated, rain showers. Southern region (Njombe and Ruvuma region): mainly dry with few rain showers over high grounds are expected. Short periods of strong winds are likely to occur in the Lake Victoria, Lake Tanganyika, Lake Nyasa and the Indian Ocean.

AGROMETEOROLOGICAL OUTLOOK AND ADVISORY DURING JUNE 1-10, 2016

With the expected dry conditions over most of the country during June 1-10, 2016, late grown maize crop, especially over north-eastern highlands may experience soil moisture deficit and lead to poor production. Farmers as well as livestock keepers are recommended to seek advice from agricultural extension officers in their localities for appropriate possible mitigation measures.

Prepared by

TANZANIA METEOROLOGICAL AGENCY

3rd, 4th & 10th Floors - Ubungo Plaza – Morogoro Road.

P.O. Box 3056 Tel. 255 -(0) 22 – 2460706-8 ; Fax: 255 - (0) 22 – 2460718 E-mail: (1) met@meteo.go.tz (2) agromet1_tz@meteo.go.tz

Dar es Salaam UNITED REPUBLIC OF TANZANIA