

DEKADAL WEATHER REVIEW

HIGHLIGHTS

- *Out of season* rainfall was experienced during June 11-20, 2016 in some of the bimodal areas including Kilimanjaro, Arusha and Tanga regions.
- Despite out of season rainfall, growing maize crop in some places over Kilimanjaro, Arusha and Tanga regions has already been affected by prolonged seasonal dry conditions.
- The expected dry conditions during June 21-30, 2016 may continue affecting the crop leading to below average harvest.

No: 28. 2015/16 Cropping Season

Review for June 11-20, 2016 and Outlook for June 21-30, 2016

SYNOPTIC SUMMARY DURING JUNE 11-20, 2016

High pressure systems in the southern hemisphere (St. Helena and Mascarene) continued to intensify while their counterparts to the north (Azores and Siberian) continued to relax, causing the Inter-tropical Convergence Zone (ITCZ) to continue moving northwards. For the case of Sea Surface Temperatures (SSTs), warm SSTs were observed over the South-Eastern Atlantic Ocean (closer to Angola coast) and North-West Indian Ocean (closer to Somali coast) whereas neutral to cool SSTs were observed over South-Western Indian Ocean.

RAINFALL PERFORMANCE DURING JUNE 11-20, 2016

In view of the observed synoptic conditions during the period, some of the bimodal areas, including in Kilimanjaro, Arusha and Tanga region experienced *out of season* rainfall during June 11-20, 2016 as shown in Figure 1 (satellite rainfall estimates from GeoWRSI model merged with gauge data from Tanzania rainfall stations network showing total rainfall distribution during the period). However, much of the unimodal area continued to experience normal seasonal dry conditions as shown in Figure 2 (rainfall performance as percentage of long term average). Below normal rainfall performance was also observed in some places of both the bimodal and unimodal areas. On Figure 2, above normal rainfall is indicated by green legend whereas normal rainfall is indicated by white legend and below normal rainfall performance indicated by brown and yellow legends.

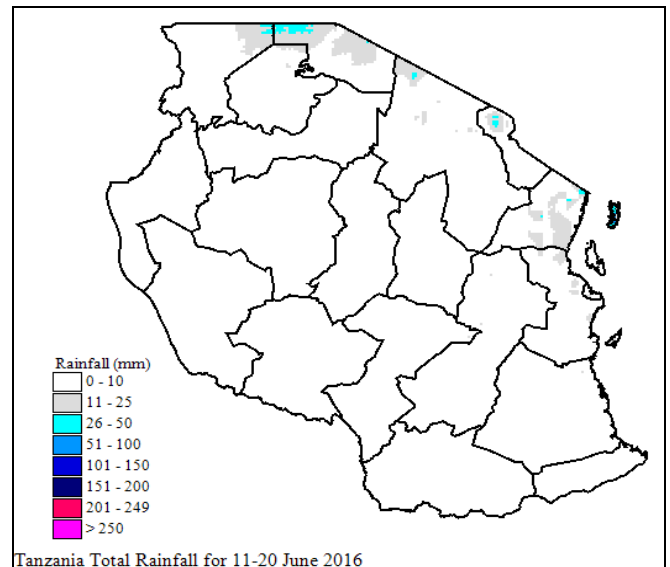


Figure 1: Total rainfall distribution during June 11-20, 2016

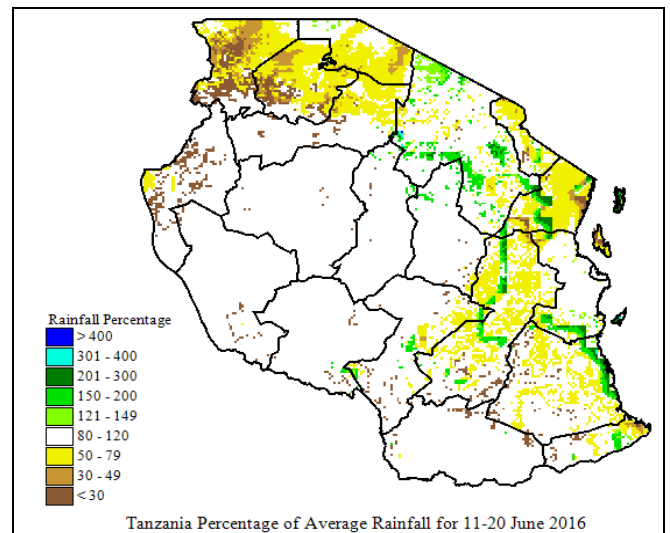


Figure 2: Rainfall performance during June 11-20, 2016 as percentage of long term average.

TEMPERATURE CONDITIONS DURING JUNE 11-20, 2016

Mostly cold temperature conditions prevailed across the country during the period, colder conditions were experienced over higher altitude areas of the country especially north-eastern highlands and south-western highlands as well as semi-arid areas including Dodoma region.

AGROMETEOROLOGICAL SUMMARY DURING JUNE 11-20, 2016

Despite *out of season* rainfall over the northern coast and north-eastern highlands, growing maize crop over Kilimanjaro Tanga and Arusha regions has already been affected in some places by the prolonged seasonal dry conditions. Pasture and water availability for livestock and wildlife on the other hand was generally average in many places of the country.

HYDROLOGICAL CONDITIONS DURING JUNE 11-20, 2016

Water levels in dams and river flow discharges were low due to the prevailing seasonal dry conditions

EXPECTED SYNOPTIC CONDITIONS DURING JUNE 21-30, 2016

During the period, the southern high-pressure systems (St. Helena and Mascarene) are expected to intensify significantly, while their counterparts to the north (Azores and Siberian) are expected to relax and allow the ITCZ to continue moving northward. Warm SSTs are expected over South-Eastern Atlantic Ocean, Central Indian Ocean and North-West Indian Ocean (closer to Somali coast) while neutral to cool SSTs are expected over South-Western Indian Ocean. These climatic and synoptic system set-ups are expected to cause strong southerly winds, dry and cool conditions over most parts of the country.

EXPECTED WEATHER DURING JUNE 21-30, 2016

Lake Victoria Basin (Kagera, Mwanza, Mara, Geita, Simiyu and Shinyanga regions): mainly dry conditions with few isolated rain showers and thunderstorms are expected. **North-eastern highlands** (Kilimanjaro, Arusha and Manyara regions), **northern coast** (Dar es Salaam, Morogoro and Tanga regions, the isles of Unguja and Pemba), **western regions** (Kigoma, Katavi and Tabora regions), **central areas** (Dodoma and Singida regions), **south-western highlands** (Rukwa, Iringa, Songwe and Mbeya regions), **southern Coast** (Mtwara and Lindi regions) and **southern region** (Njombe and Ruvuma region): mainly dry conditions with few isolated rain showers are expected.

AGROMETEOROLOGICAL OUTLOOK AND ADVISORY DURING JUNE 21-30, 2016

With the expected dry conditions over most of the country during June 21-30, 2016, maize crop may be further affected leading to below average harvest.

HYDROLOGICAL OUTLOOK DURING JUNE 21-30, 2016

Hydrological conditions are expected to be below average in most places of the country due to persistent dry conditions coupled with strong winds.

Prepared by

TANZANIA METEOROLOGICAL AGENCY

3rd, 4th & 10th Floors - Ubungo Plaza - Morogoro Road.

P.O. Box 3056 Tel. 255 -(0) 22 - 2460706-8 ; Fax: 255 - (0) 22 - 2460718 E-mail: (1) met@meteo.go.tz (2) agromet1_tz@meteo.go.tz

Dar es Salaam UNITED REPUBLIC OF TANZANIA