

DEKADAL WEATHER REVIEW

HIGHLIGHTS

- Seasonal dry conditions continued to prevail across the country during July 1-10, 2016.
- The observed conditions were favourable for *out of season* activities including crops harvesting and drying.
- With the prevailing dry conditions across the country, farmers are advised to continue with *out of season* activities.

No: 30. 2015/16 Cropping Season

Review for July 1-10, 2016 and Outlook for July 10-20, 2016

SYNOPTIC SUMMARY DURING JULY 1-10, 2016

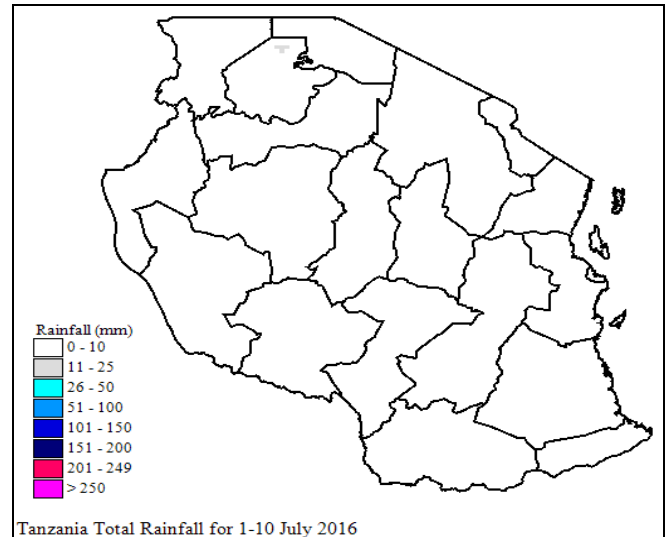
High pressure systems in the southern hemisphere (St. Helena and Mascarene) continued to intensify while their counterparts to the north (Azores and Siberian) relaxed, causing the Inter-tropical Convergence Zone (ITCZ) to continue moving northwards. For the case of Sea Surface Temperatures (SSTs), they were observed to maintain both over the South-Eastern Atlantic Ocean (warm), North-West Indian Ocean (neutral to warm) and over South-Western Indian Ocean (neutral to cool).

RAINFALL PERFORMANCE DURING JULY 1-10, 2016

Seasonal dry conditions continued to prevail across the country during the period. Most places in the country continued to experience dry conditions as shown in Figure 1 (satellite rainfall estimates from GeoWRSI model merged with gauge data from Tanzania rainfall stations network showing total rainfall distribution during the period). Similarly, Figure 2 shows rainfall performance as percentage of long term average whereby a large part of the country experienced normal conditions (white legend). However, below normal conditions (yellow and brown legends) were observed in some areas with few places experiencing above normal conditions (green legend) especially in northern part of the country.

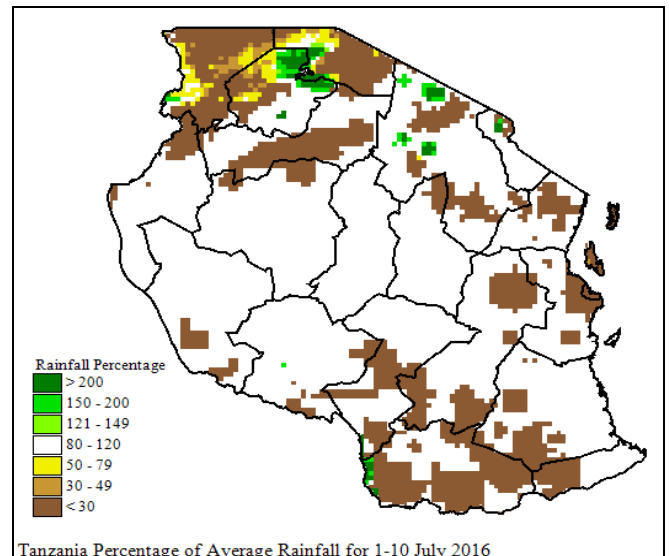
TEMPERATURE CONDITIONS DURING JULY 1-10, 2016

Cold temperature conditions continued to prevail in most places of the country especially highland and semi-arid places..



Tanzania Total Rainfall for 1-10 July 2016

Figure 1: Rainfall performance (total rainfall) during July 1-10, 2016



Tanzania Percentage of Average Rainfall for 1-10 July 2016

Figure 2: Rainfall performance during July 1-10, 2016 as percentage of long term average.

AGROMETEOROLOGICAL SUMMARY DURING JULY 1-10, 2016

Dry conditions experienced during the period were favourable for out of season activities. Farmers were therefore mostly engaged in *out of season* activities including crops harvesting and drying.

South-western highlands (Rukwa, Iringa, Songwe and Mbeya regions): mainly dry with few rain showers over high grounds are expected. Southern Coast (Mtwara and Lindi regions): mainly dry with few isolated, rain showers are expected. Southern region (Njombe and Ruvuma region): mainly dry with few rain showers over high grounds are expected.

HYDROLOGICAL CONDITIONS DURING JULY 1-10, 2016

Water levels in dams and river flow discharges were low due to the prevailing seasonal dry conditions.

AGROMETEOROLOGICAL OUTLOOK AND ADVISORY DURING JULY 11-20, 2016

With the prevailing seasonal dry conditions across the country, farmers are advised to continue with *out of season* activities.

EXPECTED SYNOPTIC CONDITIONS DURING JULY 11-20, 2016

During the period, the southern high-pressure systems (St. Helena and Mascarene) are expected to intensify significantly, while their counterparts to the north (Azores and Siberian) are expected to relax and allow the ITCZ to continue moving northward. Neutral to warm SSTs are expected over South-Eastern Atlantic Ocean and North-West Indian Ocean (closer to Somali coast) while neutral to cool SSTs are expected over South-Western Indian Ocean. On the other hand, warm SSTs are expected over Central Indian Ocean. These climatic and synoptic system set-ups are expected to cause strong southerly winds, dry and cool conditions over most parts of the country.

HYDROLOGICAL OUTLOOK DURING JULY 11-20, 2016

Hydrological conditions are expected to continue declining in most places of the country due to persistent dry conditions coupled with strong winds.

EXPECTED WEATHER DURING JULY 11-20, 2016

Lake Victoria Basin (Kagera, Mwanza, Mara, Geita, Simiyu and Shinyanga regions): mainly dry conditions with few isolated rain showers and thunderstorms are expected. Northeastern highlands (Kilimanjaro, Arusha and Manyara regions): mainly dry conditions with few isolated rain showers are expected. Northern coast (Dar es Salaam, Morogoro and Tanga regions, the isles of Unguja and Pemba): mainly dry conditions with few isolated light rain are expected. Western regions (Kigoma, Katavi and Tabora regions): mainly dry conditions with few isolated rain showers are expected. Central areas (Dodoma and Singida regions): mainly dry conditions with few isolated rain showers are expected.

Prepared by

TANZANIA METEOROLOGICAL AGENCY

3rd, 4th & 10th Floors - Ubungo Plaza - Morogoro Road.

P.O. Box 3056 Tel. 255 -(0) 22 - 2460706-8 ; Fax: 255 - (0) 22 - 2460718 E-mail: (1) met@meteo.go.tz (2) agromet1_tz@meteo.go.tz

Dar es Salaam UNITED REPUBLIC OF TANZANIA