



DEKADAL WEATHER REVIEW

HIGHLIGHTS

- Seasonal dry conditions continued to prevail over most of the country during September 11-20, 2016, with out of season severe weather conditions experienced over few areas in Sumbawanga region.
- The severe weather in Sumbawanga caused damage of stored foods and death of poultry.
- During September 21-30, 2016, farmers over bimodal area are advised to continue with land preparation and acquisition of inputs for *vuli 2016* cropping season.

No: 37 2015/16 Cropping Season

Review for September 11-20, 2016 and Outlook for September 21-30, 2016

SYNOPTIC SUMMARY DURING SEPTEMBER 11-20, 2016

Southern hemisphere high-pressure systems (St. Helena and Mascarene) slightly relaxed while their counterparts to the north (Azores and Siberian) remained relaxed causing the Inter-Tropical Convergence Zone (ITCZ) to remain stationery in its current position in the northern hemisphere. The warm Sea Surface Temperatures (SSTs) over the South-Eastern Atlantic Ocean (SEAO) closer to Angola coast were maintained while neutral to cool SSTs were observed over the South-Western Indian Ocean (SWIO). On the other hand cooling of SSTs in the North-West Indian Ocean (NWIO) (closer to Somali coast) continued.

whereby dry conditions were observed in most places as shown in Figure 1 (satellite rainfall estimates from GeoWRSI model merged with gauge data from Tanzania rainfall stations network showing total rainfall distribution during the period). However, out of season light rain was observed in some places over Lake Victoria basin. Out of season severe weather conditions were also experienced in Mtimbwa Village, Sumbawanga Region.

TEMPERATURE CONDITIONS DURING SEPTEMBER 11-20, 2016

Cold temperature conditions continued to prevail in some places of the country especially highland whereas lowland areas experienced relatively warmer condition.

RAINFALL PERFORMANCE DURING SEPTEMBER 11-20, 2016

AGROMETEOROLOGICAL SUMMARY DURING SEPTEMBER 11-20, 2016

Dry conditions experienced during the period were favourable for out of season activities mainly drying of crops while the light rains observed in some areas over Lake Victoria basin were favourable for land preparation. However a case of out of season severe weather condition was experienced in Mtimbwa village Sumbawanga region which caused damage of stored foods and death of poultry

HYDROLOGICAL CONDITIONS DURING SEPTEMBER 11-20, 2016

Water levels in dams and river flow discharges were low due to the prevailing seasonal dry conditions.

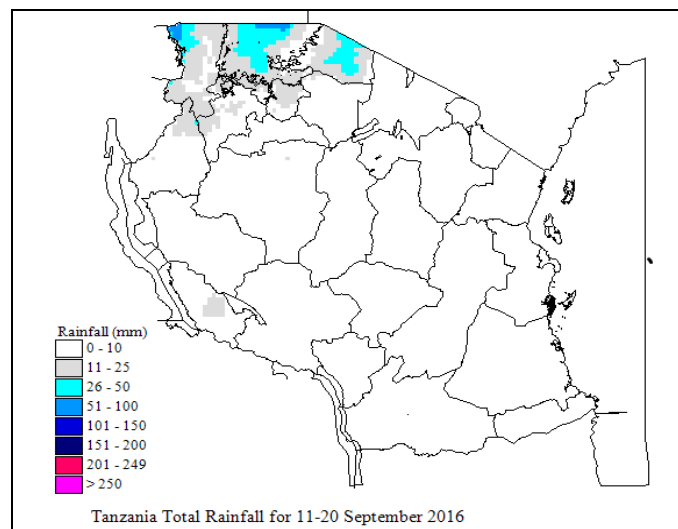


Figure 1: Rainfall performance (total rainfall) during September 11-20, 2016

With the observed synoptic situation, seasonal dry conditions continued to prevail in the country during the period

**EXPECTED SYNOPTIC CONDITIONS
DURING SEPTEMBER 21-30, 2016**

Southern high-pressure systems are expected to intensify, while their counterparts to the north are expected to remain relaxed, thus allowing the ITCZ to continue remaining on its current position in the northern hemisphere. Neutral to warm SSTs over the South-East Atlantic Ocean closer to Angola coast are expected to persist. Neutral to cool SSTs over the South-West Indian Ocean and warm SSTs over the Central Indian Ocean are expected. Cool SSTs in the North-West Indian Ocean (closer to Somali coast) are expected. These climatic and synoptic system set-up are expected to cause occasional strong southerly winds, dry and cool conditions over most parts of the country.

**EXPECTED WEATHER DURING
SEPTEMBER 21-30, 2016**

Lake Victoria Basin (Kagera, Mwanza, Mara, Geita, Simiyu and Shinyanga regions): mainly dry conditions with few isolated rain showers are expected. North-eastern highlands (Kilimanjaro, Arusha and Manyara regions): mainly dry conditions with few isolated rain showers are expected. Northern coast (Dar es Salaam, Morogoro and Tanga regions, the isles of Unguja and Pemba): mainly dry conditions with few isolated light rain are expected. Western regions (Kigoma, Katavi and Tabora regions): mainly dry conditions with few isolated rain showers are expected. Central areas (Dodoma and Singida regions): mainly dry conditions with few isolated rain showers -are expected. South-western highlands (Rukwa, Iringa, Songwe and Mbeya regions): Mainly dry with few rain showers over high grounds are expected. Southern Coast (Mtwara and Lindi regions): mainly dry conditions with few isolated, rain showers are expected, especially during the second half of the dekad. Southern region (Njombe and Ruvuma region): mainly dry conditions with few rain showers over high grounds are expected.

**AGROMETEOROLOGICAL OUTLOOK AND
ADVISORY DURING SEPTEMBER 21-30, 2016**

With the expected isolated rains in some places of the country, farmers over the bimodal areas are advised to continue with land preparation and acquisition of inputs for the *vuli* cropping season. Farmers are advised to seek professional advice from agricultural extension officers in their localities.

**HYDROLOGICAL OUTLOOK DURING
SEPTEMBER 21-30, 2016**

Hydrological conditions are expected to continue declining in most places of the country due to persistent dry conditions coupled with strong winds.

Prepared by

TANZANIA METEOROLOGICAL AGENCY

3rd, 4th & 10th Floors - Ubungo Plaza – Morogoro Road.

P.O. Box 3056 Tel. 255 -(0) 22 – 2460706-8 ; Fax: 255 - (0) 22 – 2460718 E-mail: (1) met@meteo.go.tz (2) agromet1_tz@meteo.go.tz

Dar es Salaam UNITED REPUBLIC OF TANZANIA