



DEKADAL WEATHER REVIEW

HIGHLIGHTS

- Below normal rainfall performance was experienced over most of the country during October 21-31, 2016.
- Long dry spells experienced in many places over Lake Victoria basin caused a delay to planting and dry out of early planted crops in Karagwe district.
- Farmers are advised to consult Agricultural experts in their localities for the possibility of planting early maturing and drought tolerant crops over northern coast and north-eastern highlands due to delayed start of *Vuli* rains.
- Over the rest of the country, farmers are advised to continue with land preparation and acquisition of inputs.

No: 3 2016/17 Cropping Season

Review for October 21-31, 2016 and Outlook for November 1-10, 2016

SYNOPTIC SUMMARY DURING OCTOBER 21-31, 2016

High pressure systems in the southern hemisphere (St. Helena and Mascarene high pressure systems) remained slightly relaxed, while their counterparts to the north (Azores and Siberian) intensified. The observed situation caused the Inter-tropical Convergence Zone (ITCZ) to continue shifting southwards and sit just north of the country. Warm Sea Surface Temperatures (SSTs) were experienced over the Atlantic Ocean closer to Angola coast and central Indian Ocean. Neutral SSTs were observed over the southwestern Indian Ocean whereas cool SSTs were observed in the northwest Indian Ocean closer to Somali coast.

Most of the country experienced below normal rainfall performance as illustrated in Figure 1. Over Lake Victoria basin where *Vuli* season had started, long dry spell durations were experienced in many places of Mwanza, Mara, Shinyanga and Simiyu regions. More than 400% long term average rainfall was observed over south and western areas of Mbeya, Ruvuma, and Njombe regions (Figure 1).

AGROMETEOROLOGICAL SUMMARY DURING OCTOBER 21-31, 2016

Long dry spells experienced over areas around Lake Victoria basin caused a delay to planting in many places and dryout of early planted crops in Karagwe district.

RAINFALL PERFORMANCE DURING OCTOBER 21-31, 2016

HYDROLOGICAL CONDITIONS DURING OCTOBER 21-31, 2016

Water levels in dams and river flow discharges were low due to persistent dry conditions.

EXPECTED SYNOPTIC CONDITIONS DURING NOVEMBER 1-10, 2016

Southern hemisphere high pressure systems are expected to relax while their counterparts to the north are expected to continue intensifying thus allowing the ITCZ to continue moving southwards. Warm SSTs over the southeast Atlantic Ocean closer to Angola coast are expected to persist. Neutral to cool SSTs over the

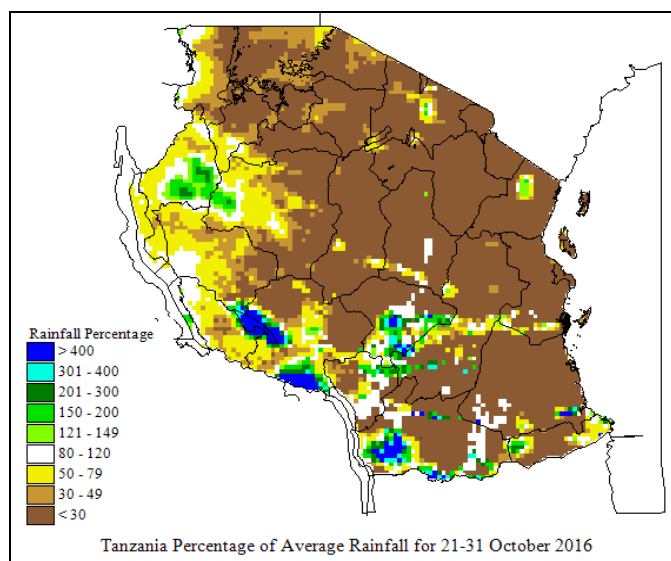


Figure 1: Rainfall performance during October 21-31, 2016 as percentage of long term averages.

southwest Indian Ocean and warm SSTs over the central Indian Ocean are expected. Warm SSTs are expected over the Atlantic Ocean closer to Angola coast and central Indian Ocean. Neutral SSTs are expected over the southwestern Indian Ocean while Cool SSTs are expected in the northwest Indian Ocean closer to Somali coast. The relaxation of the southern anticyclones is expected to result into southeasterly winds which will cause few rainfall activities over the country.

HYDROMETEOROLOGICAL OUTLOOK AND ADVISORY DURING NOVEMBER 1-10, 2016

Water levels and river flow discharge are expected to continue declining, especially over unimodal areas of the country due to persistent dry conditions.

EXPECTED WEATHER DURING NOVEMBER 1-10, 2016

Lake Victoria Basin (Kagera, Mwanza, Mara, Geita, Simiyu and Shinyanga regions): Few isolated rain showers and thunderstorms are expected. Northeastern highlands (Kilimanjaro, Arusha and Manyara regions): Few isolated rain showers are expected. Northern coast (Dar es Salaam, Morogoro and Tanga regions, the isles of Unguja and Pemba): Few isolated light rain showers are expected. Western regions (Kigoma, Katavi and Tabora regions): Occasional isolated rain showers and thunderstorms are expected. Central areas (Dodoma and Singida regions): Mainly dry conditions are expected. Southwestern highlands (Rukwa, Iringa, Songwe and Mbeya regions): Mainly dry conditions are expected. Southern Coast (Mtwara and Lindi regions): Mainly dry conditions are expected. Southern region (Njombe and Ruvuma region): Mainly dry conditions are expected.

AGROMETEOROLOGICAL OUTLOOK AND ADVISORY DURING NOVEMBER 1-10, 2016

Soil moisture replenishments is expected over Lake Victoria basin, northern coast, and few localized areas in the northeastern highlands. Persistent soil moisture deficit will continue over much of bimodal areas. Pasture conditions will remain poor during the forecast period. Farmers and livestock keepers are advised to consult Agricultural and Livestock Extension Officers in their localities for optimal use of the available resources.

Prepared by

TANZANIA METEOROLOGICAL AGENCY

3rd, 4th & 10th Floors - Ubungo Plaza – Morogoro Road.

P.O. Box 3056 Tel. 255 -(0) 22 – 2460706-8 ; Fax: 255 - (0) 22 – 2460718 E-mail: (1) met@meteo.go.tz (2) agromet1_tz@meteo.go.tz

Dar es Salaam UNITED REPUBLIC OF TANZANIA