

## DEKADAL WEATHER REVIEW

### HIGHLIGHTS

- Most of the country continued to experience below normal rainfall performance during November 21-30, 2016 except few places over Kagera, Kigoma, Geita, Simiyu, Mara, Arusha and Manyara regions that experienced normal to above normal rainfall.
- Below normal rainfall performance over the bimodal areas impeded *vuli* crop establishment in many areas in the northern coast and northeastern highlands.
- Soil moisture management practices and growing drought tolerant and early maturing crops are highly recommended.

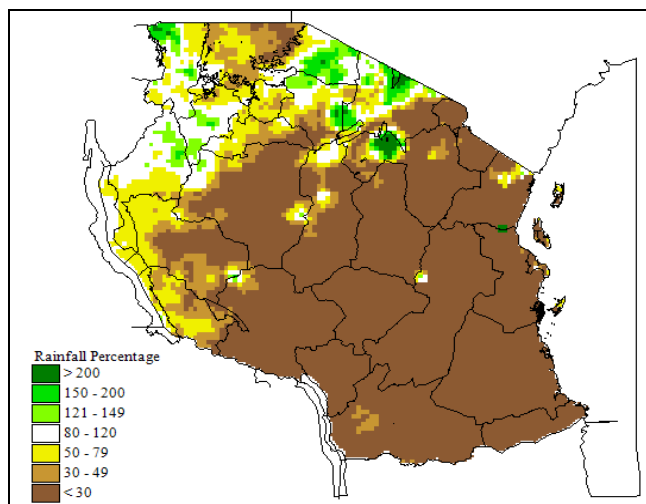
No: 6 2016/17 Cropping Season

Review for November 21-30, 2016 and Outlook for December 1-10, 2016

### SYNOPTIC SUMMARY DURING NOVEMBER 21-30, 2016

High pressure systems in the southern hemisphere (St. Helena and Mascarene high pressure systems) relaxed slightly whereas the ones in the northern hemisphere (Azores and Siberian) slightly intensified. The situation caused the Inter-tropical Convergence Zone (ITCZ) to continue shifting southwards. Warm Sea Surface Temperatures (SSTs) were observed over central Indian Ocean and over the Atlantic Ocean closer to Angola coast while neutral SSTs persisted over the South-Western Indian Ocean. Cool SSTs on the other hand persisted over Northwest Indian Ocean (closer to Somali coast).

### RAINFALL PERFORMANCE DURING NOVEMBER 21-30, 2016



Tanzania Percentage of Average Rainfall for 21-30 November 2016

Figure 1: Rainfall performance during November 21-30, 2016 as percentage of long term averages.

With the observed synoptic conditions, most of the country continued to experience below normal rainfall performance except a few places over Kagera, Kigoma, Geita, Simiyu, Mara, Arusha and Manyara regions that experienced normal to above normal rainfall as depicted in Figure 1. Generally, below normal rainfall was experienced over much of the unimodal area and some places over the bimodal area (northern coast, Islands of Zanzibar and north-eastern highlands).

### AGROMETEOROLOGICAL SUMMARY DURING DECEMBER 21-30, 2016

Early planted maize crop in some places over Mwanza and Mara regions was at ninth leaf stage and in good condition. However, persistent low moisture conditions affected *uli* crop establishment over much of northern coast and northeastern highlands. Pasture and water availability for livestock and wildlife was poor over most of the country with slight improvements in some places over the Lake Victoria basin and western regions.

### HYDROLOGICAL CONDITIONS DURING NOVEMBER 21-30, 2016

Water levels in dams and river flow discharges improved slightly over a few areas in the bimodal regions due to the occurrence of *vuli* rainfall but remained low over much of the unimodal area.

**EXPECTED SYNOPTIC CONDITIONS  
DURING DECEMBER 1-10, 2016**

Southern hemisphere high pressure systems are expected to continue relaxing while their counterparts to the north are expected to intensify thus allowing the ITCZ to continue moving southwards lying over the central to southern parts of the country. The ITCZ is expected to remain rather diffuse. The SSTs are expected to be neutral over southwestern Indian Ocean, warm over the central Indian Ocean and cool over the northwest Indian Ocean (closer to Somali coast).

**EXPECTED WEATHER DURING DECEMBER  
1-10, 2016**

Lake Victoria Basin (Kagera, Mwanza, Mara, Geita, Simiyu and Shinyanga regions): Few isolated rain showers and thunderstorms are expected. Northeastern highlands (Kilimanjaro, Arusha and Manyara regions): Occasional rain showers and thunderstorms are expected. Northern coast (Dar es Salaam, Morogoro and Tanga regions, the isles of Unguja and Pemba): Few isolated rain showers and thunderstorms are expected. Western regions (Kigoma, Katavi and Tabora regions): Isolated rain showers and thunderstorms are expected. Central areas (Dodoma and Singida regions): Few rain showers are expected. Southwestern highlands (Rukwa, Iringa, Songwe and Mbeya regions): Isolated rain showers and thunderstorms are expected. Southern coast (Mtwara and Lindi regions): Few isolated rain showers and thunderstorms are expected. Southern region (Njombe and Ruvuma region): Isolated rain showers and thunderstorms are expected.

**AGROMETEOROLOGICAL OUTLOOK AND  
ADVISORY DURING DECEMBER 1-10, 2016**

The expected rainfall over the bimodal area during December 1-10, 2016 will improve soil moisture levels required to support crops growth. Soil moisture management practices and growing drought tolerant and early maturing crops are highly recommended. Farmers are advised to consult agriculture experts in their localities for proper farm management practices to avoid soil moisture losses. Livestock keepers are also advised to consult Livestock Extension Officers for optimal use of the available water and pasture as they are expected to remain poor during the forecast period. Over the unimodal areas, farmers are advised to finalize land preparation and acquisition of farm inputs.

**HYDROMETEOROLOGICAL OUTLOOK AND  
ADVISORY DURING DECEMBER 1-10, 2016**

Water levels and river flow discharge are expected to continue to be low especially over unimodal areas of the country due to the expected below normal rainfall conditions.

*Prepared by*

**TANZANIA METEOROLOGICAL AGENCY**

**3<sup>rd</sup>, 4<sup>th</sup> & 10<sup>th</sup> Floors - Ubungo Plaza – Morogoro Road.**

**P.O. Box 3056 Tel. 255 -(0) 22 – 2460706-8 ; Fax: 255 - (0) 22 – 2460718 E-mail: (1) [met@meteo.go.tz](mailto:met@meteo.go.tz) (2) [agromet1\\_tz@meteo.go.tz](mailto:agromet1_tz@meteo.go.tz)**

**Dar es Salaam UNITED REPUBLIC OF TANZANIA**